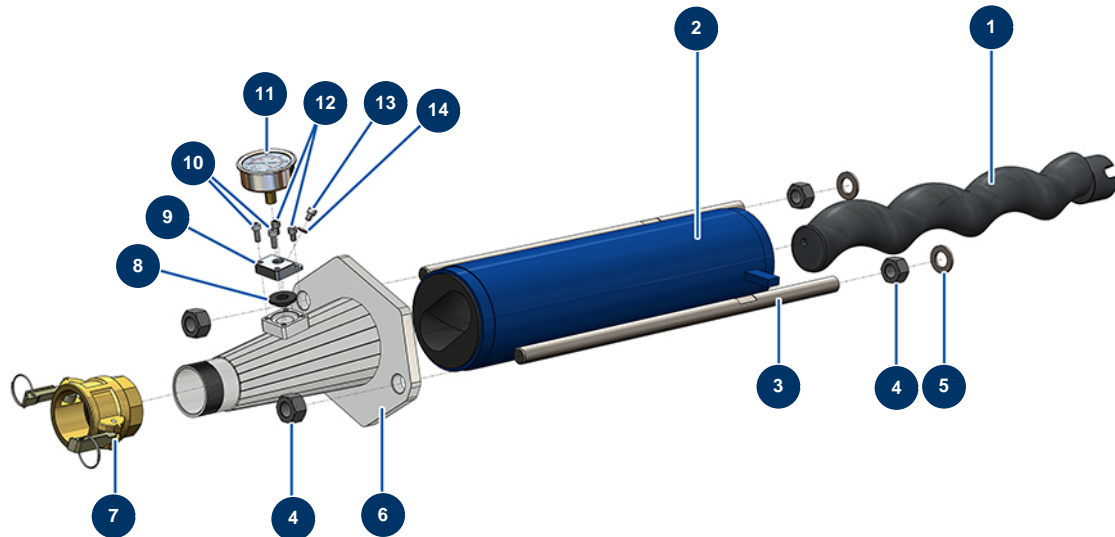


## X-PRO D80 spraying machine - Pump (liquid screed)



### Détails des pièces

Pos.	Référence	Désignation
1	MI7009107400	EUROPRO MAP 9 pump rotor
2	MI3F00529600	EUROPRO MAP 9 SX 60SH adjustable pump stator
3	M10452	550 mm fastening tie rod for CP 60
4	12473	M 20 nut
4	12473	M 20 nut
5	10141	ø 20 inox narrow washer
6	C20571	CP60 liquid floor-screed pump head
7	12364	2" camlock steel coupling, inner threaded 2" - CP 60
8	12126	MIXPRO 14 pump head manometer membrane
9	M10079	MIXPRO 14 cage cover
10	90157	M6 x 16 cylindrical head screw - CP 60
11	80070	Axial manometer 1/4" conical oil 50 mm 0 to 60 bar
12	90798	M6 x 10 cylindrical head screw - CP 60 cylindrical head screw

<b>Pos.</b>	<b>Référence</b>	<b>Désignation</b>
13	12625	6 x 8 cylindrical head screw
14	12765	Copper seal for JETPRO 80 pump nose