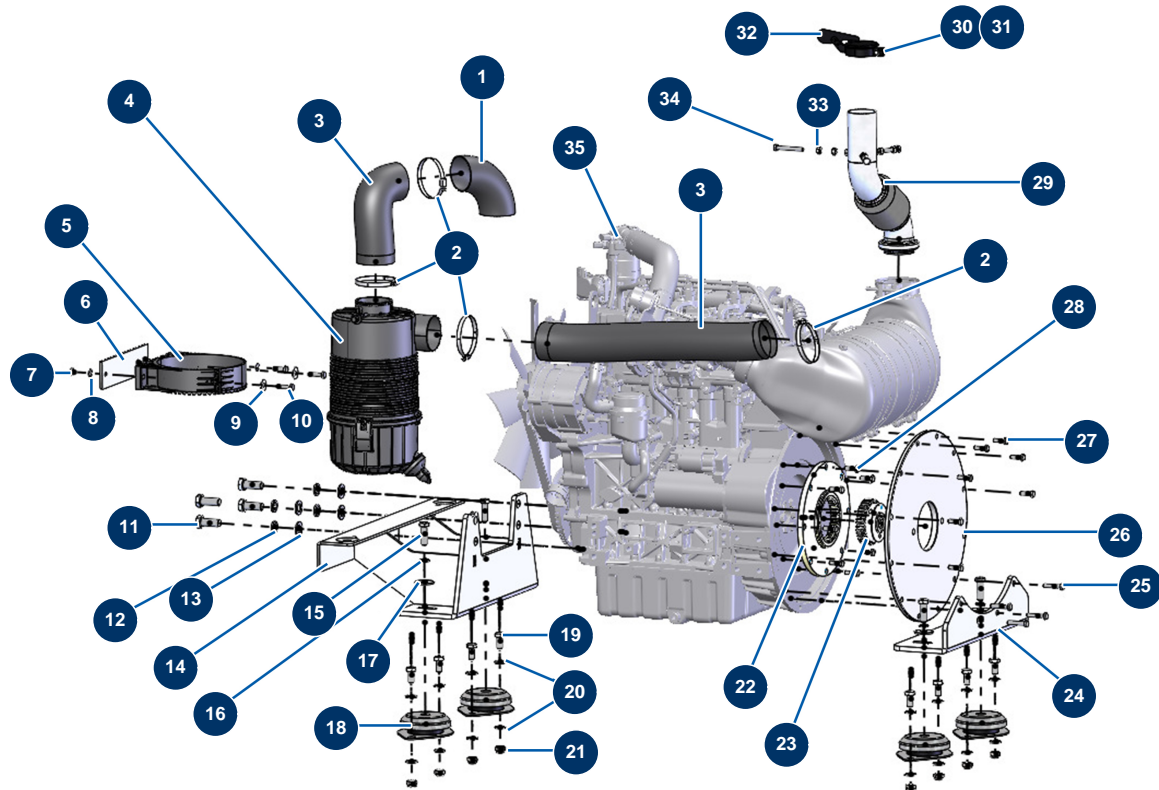


X-PRO D200 liquid screed machine - Motor



Détails des pièces

Pos.	Référence	Désignation
1	20386	
2	20484	
2	20484	
3	20357	
3	20357	
4	20271	
5	20272	
6	C23227	6
7	13980	M 8 nylstop inox nut
8	30256	ø 8 inox narrow washer
9	30292	ø 8 inox large washer
10	11544	THEF 8 x 25 screw
11	20203	THEF DIN933 8.8 M16/150 x 40 screw

Pos.	Référence	Désignation
12	20374	127 ø 16 grower washer
13	30288	ø 16 inox narrow washer
14	C23062	14
15	12298	Complete motor pump 8 litres - 130 bar - Turbipompe
16	12462	Grower washer ø 12
17	30294	ø 12 inox large washer
18	20265	Silentbloc for X-SCREED motor plate
19	12251	THEF 12 x 25 screw
20	30281	ø 12 inox narrow washer
21	10051	M 12 nylstop nut
22	20031	
23	20030	
24	C23061	24
25	20202	THEF DIN933 8.8 3/8 UNC x 40 screw
26	20029	
27	20201	THEF DIN933 8.8 3/8 UNC x 25 screw
28	20200	THEF DIN933 8.8 5/16 UNC x 25 screw
29	C23105	29
30	20602	THEF 5 x 40 inox screw
31	11880	M 5 nylstop nut
32	20767	32
33	14075	M 8 inox nut
34	12450	THEF 8 x 60 screw
35	20020	Diesel motor KOHLER KDI 1903 36kW