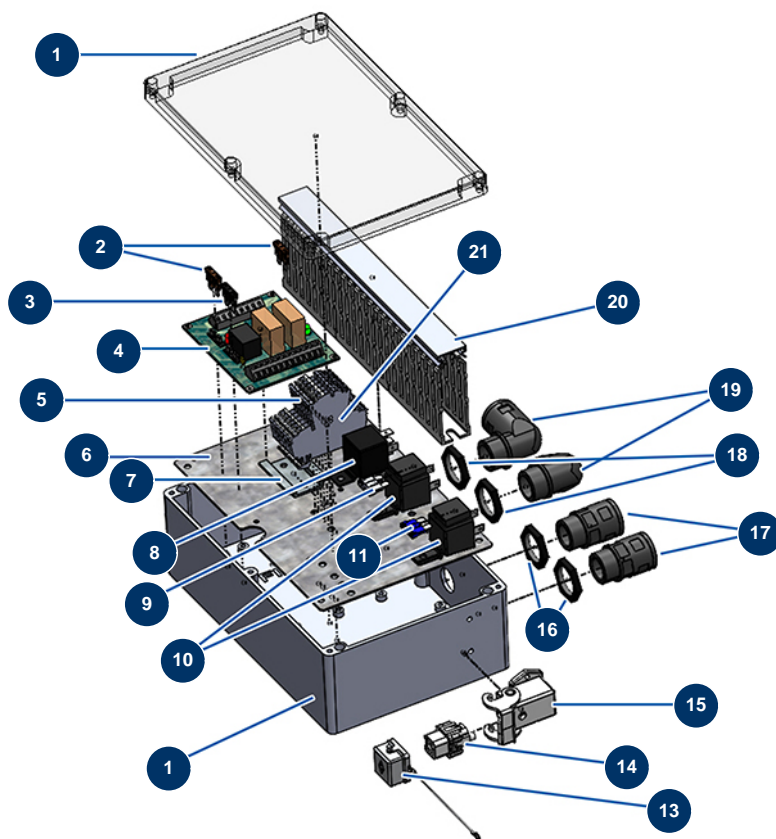


X-PRO D200 liquid screed machine - Electrical box



Détails des pièces

Pos.	Référence	Désignation
1	20228	250 x 160 x 90 plastic box with transparent lid
1	20228	250 x 160 x 90 plastic box with transparent lid
2	13080	Standard US 5A fuse - CP 60
3	13079	Standard US 2A fuse - CP 60
4	12988	Safety electronic card - C.P 60
5	20390	5
6	20229	
7	10265	
8	13108	C-shape 12V relay - C.P 60
9	20252	US 25A standard fuse
10	20378	Relay 12V DC with fuse
11	20251	US 15A standard fuse
13	12535	2 PIV cover with MIXPRO 14 gasket

Pos.	Référence	Désignation
14	11914	Female insert 4p + G
15	12543	Insulating bend socket base 3p + G - 1 lever
16	20051	M 20 grey plastic cable gland nut
17	20512	
18	20050	M 25 cable gland nut
19	20511	
20	20641	
21	20389	