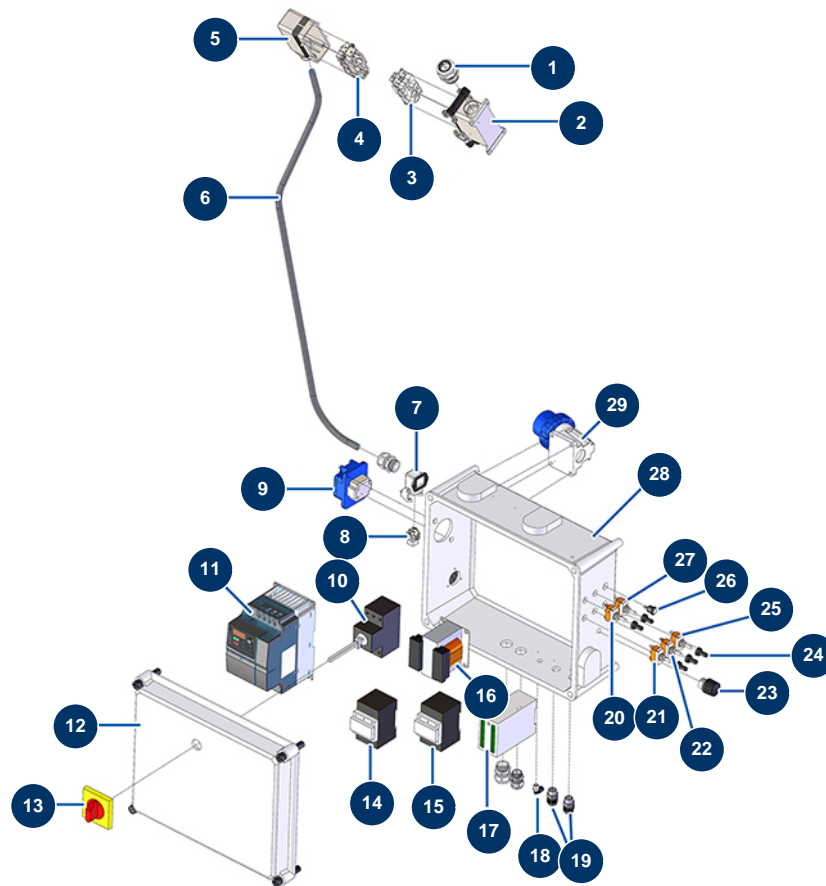


MIXPRO 28 - 3 kW complete floor-screed continuous mixing machine - Electrical box (until 12/2025)



Détails des pièces

| Pos. | Référence | Désignation |
|------|--------------|---|
| 1 | MI3C04200208 | PG21 cable gland |
| 2 | MI3C02800400 | Fixed Base |
| 3 | MI3C03100400 | Male motor safety socket |
| 4 | MI3C02700600 | Female motor safety socket |
| 5 | MI3C02800100 | Mobile Base |
| 6 | MI3C03900008 | 7 x 2,5 motor power cable by the metre |
| 7 | 12543 | Insulating bend socket base 3p + G - 1 lever |
| 8 | 11914 | Female insert 4p + G |
| 9 | MI3C02601001 | MIXPRO 28 straight socket F 2P + T 16A |
| 10 | MI3C01030108 | Main switch |
| 11 | MI3C05100155 | MOSQUITO/SPRINTER, PLUS MONO & MIXPRO 28 inverter - 3KW |
| 12 | MI3C00110163 | MIXPRO 28 plastic box door |
| 13 | MI3C01300207 | ABB main start stop button |

| Pos. | Référence | Désignation |
|------|--------------|--|
| 14 | MI3C00700117 | 4 KW 24V AC coil contactor |
| 15 | MI3C00700110 | 3RT10251A 7,5KW 24V AC coil contactor |
| 16 | MI3C00500101 | 220 V transformer |
| 17 | MI3C03202500 | MOSQUITO, SPRINTER black box |
| 18 | 30124 | Corrugated Legris coupling M1/8" Ø 6 |
| 19 | MI3C04200201 | PG 09 watertight cable gland |
| 20 | MI3C01800402 | T315N-A ON-ON switch |
| 21 | MI3C01800500 | 1-0 T115 A-A switch |
| 22 | MI3C01800100 | 1-0-1 T115 E-A switch |
| 23 | MI3C00300101 | MIXPRO28/SPRINTER/MOSQUITO machine potentiometer |
| 24 | MI3C02100100 | Cover for switch |
| 25 | MI3C01800200 | Main Switch |
| 26 | MI8055000100 | Neon bulb |
| 27 | MI3C01801000 | 1-0 T115 F-A switch |
| 28 | MI3C00110464 | Plastic case without door for MIXPRO 28 |
| 29 | MI3C03000103 | Elbow socket for male base 220V |