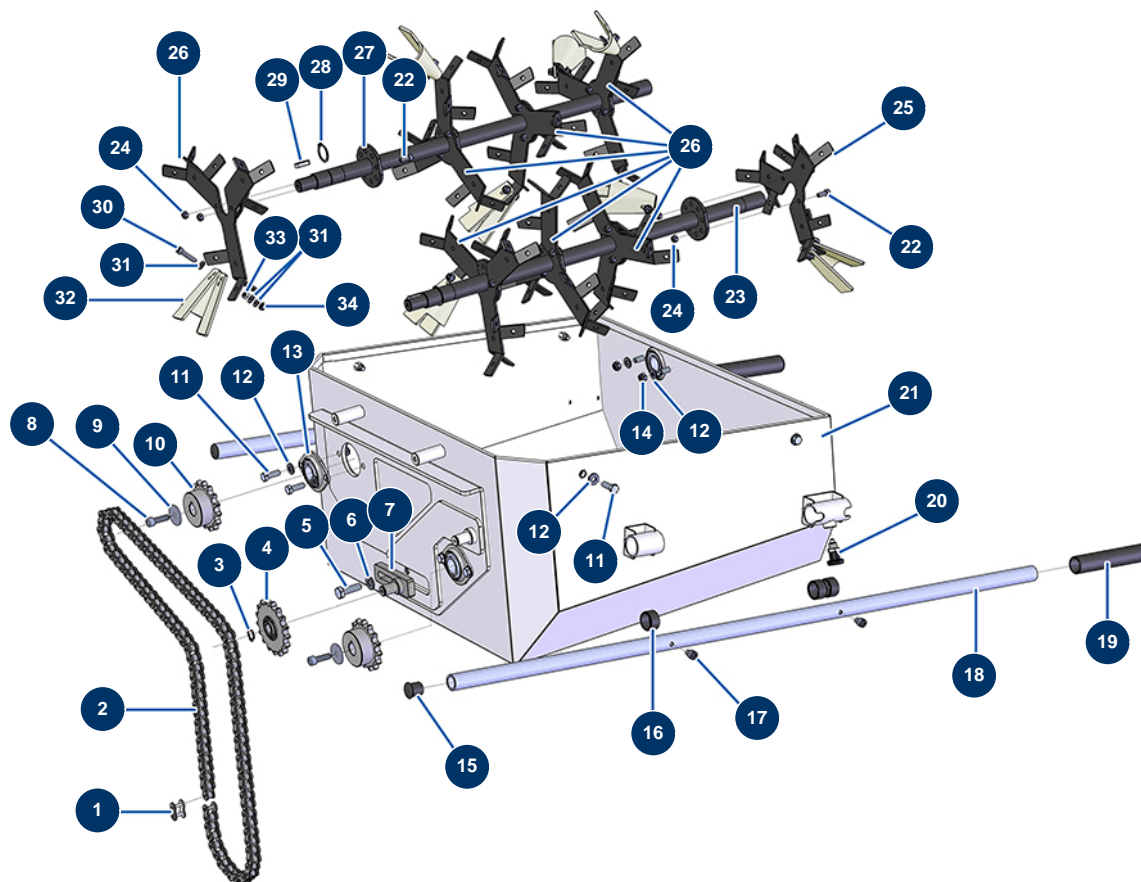


TURBISOL 200 blowing machine - Hopper (from 10/2021)



Détails des pièces

Pos.	Référence	Désignation
1	14723	
2	14722	
3	11991	Ø 16 outer circlip
4	14727	17 teeth single sprocket pitch 15,875 for TURBISOL 200 blowing machine
5	12934	THEF 10 x 35 screw
6	80261	ø 10 inox medium washer
7	C22894	
8	90996	6 x 20 inox cylindrical head screw
9	80262	Very large inox washer Ø 6
10	14726	15 teeth single sprocket pitch 15,875 for TURBISOL 200 blowing machine
11	11544	THEF 8 x 25 screw
11	11544	THEF 8 x 25 screw
12	80260	ø 8 inox medium washer

Pos.	Référence	Désignation
12	80260	ø 8 inox medium washer
12	80260	ø 8 inox medium washer
13	14729	
14	13980	M 8 nylstop inox nut
15	90870	Black plastic end cap for ø 25 round tube
16	13453	Cylindrical bearing 26/30 x 16
17	90151	8 x 10 cylindrical head screw
18	C21326	JETMIX 80 / Blowing machine arm
19	90255	Arm handle for EUROPRO 24P, E50 and E100
20	13454	M12 X 1.5 indexage pin
21	C22893	
22	90157	M6 x 16 cylindrical head screw - CP 60
22	90157	M6 x 16 cylindrical head screw - CP 60
23	C23150	TURBISOL 200 4-blades lower mixing shaft
24	14217	M 6 nylstop inox nut
24	14217	M 6 nylstop inox nut
25	C23125	TURBISOL 200 star-shaped carding paddle ø250
26	C23124	TURBISOL 200 star-shaped carding paddle ø310
26	C23124	TURBISOL 200 star-shaped carding paddle ø310
27	C22952	TURBISOL 200 4-blades upper mixing shaft
28	13847	Ø 24 outer circlip
29	12000	6 x 6 x 29 parallel key with round end
30	90153	6 x 30 cylindrical head screw
31	80259	Ø 6 medium washer
31	80259	Ø 6 medium washer
32	11906	Blowing machine mixer foam-rubber square
33	10038	M 6 nut
34	90491	M 16 nylstop nut