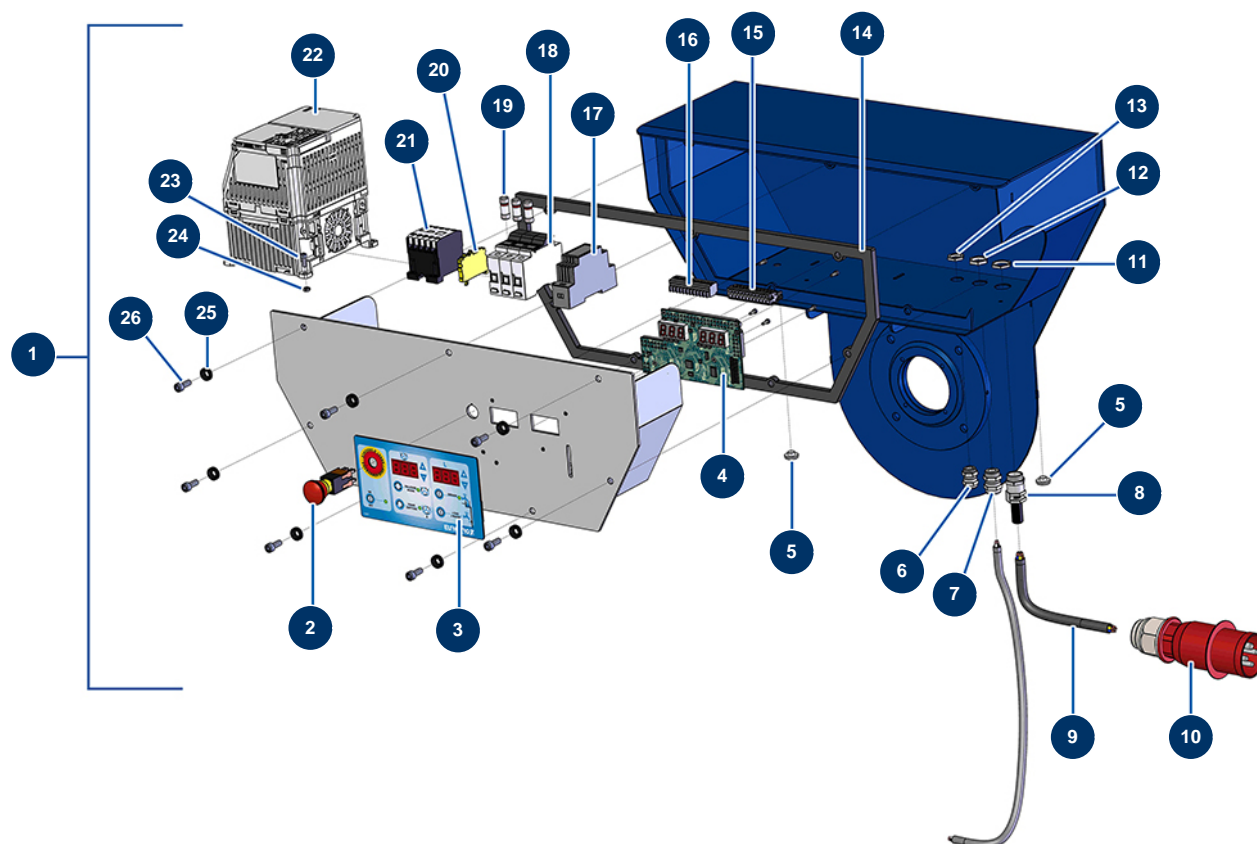


## MIXPRO 100 - 400V TETRA sequential mixer - Electrical box



### Détails des pièces

Pos.	Référence	Désignation
1	14273	Complete membrane electrical box for MIXPRO 100 - 400V TETRA
2	13015	Hanging EMERGENCY STOP button Ø16
3	13007	IDEAL MIXER front with membrane
4	30673	C.P IDEAL MIXER & MIXPRO 100 electronic card
5	80397	Water exhaust cork for electrical box
5	80397	Water exhaust cork for electrical box
6	80445	Watertight cable gland of M16
7	30040	Nickel plated watertight cable gland of 11 CEM
8	80451	Brass cable gland of 13 for power cable
9	13146	H07RNF 5G2.5 electrical cable by the metre
10	13147	Male electrical plug 3P + N + G 16A
11	30054	Cable gland locknut of 13
12	30333	Cable gland locknut of 11 CEM

Pos.	Référence	Désignation
13	11327	Cable gland locknut of M16
14	12138	EUROPRO MIXPRO 100 electrical box gasket
15	11772	12 pins female connector
16	11771	12 pins male connector
17	12711	Supply 230V-24VDC-15W
18	12149	32 A Tetra fuse holder
19	12150	Fuse 16 A AM 10.38
20	30038	Yellow and green conductive block 6 mm <sup>2</sup>
21	11918	Coil contactor 24 Volt AC
22	12945	Inverter 400 V - 4 KW GA
23	12444	4 x 12 cylindrical head screw
24	10038	M 6 nut
25	80573	Hollow washer Ø 6
26	90157	M6 x 16 cylindrical head screw - CP 60