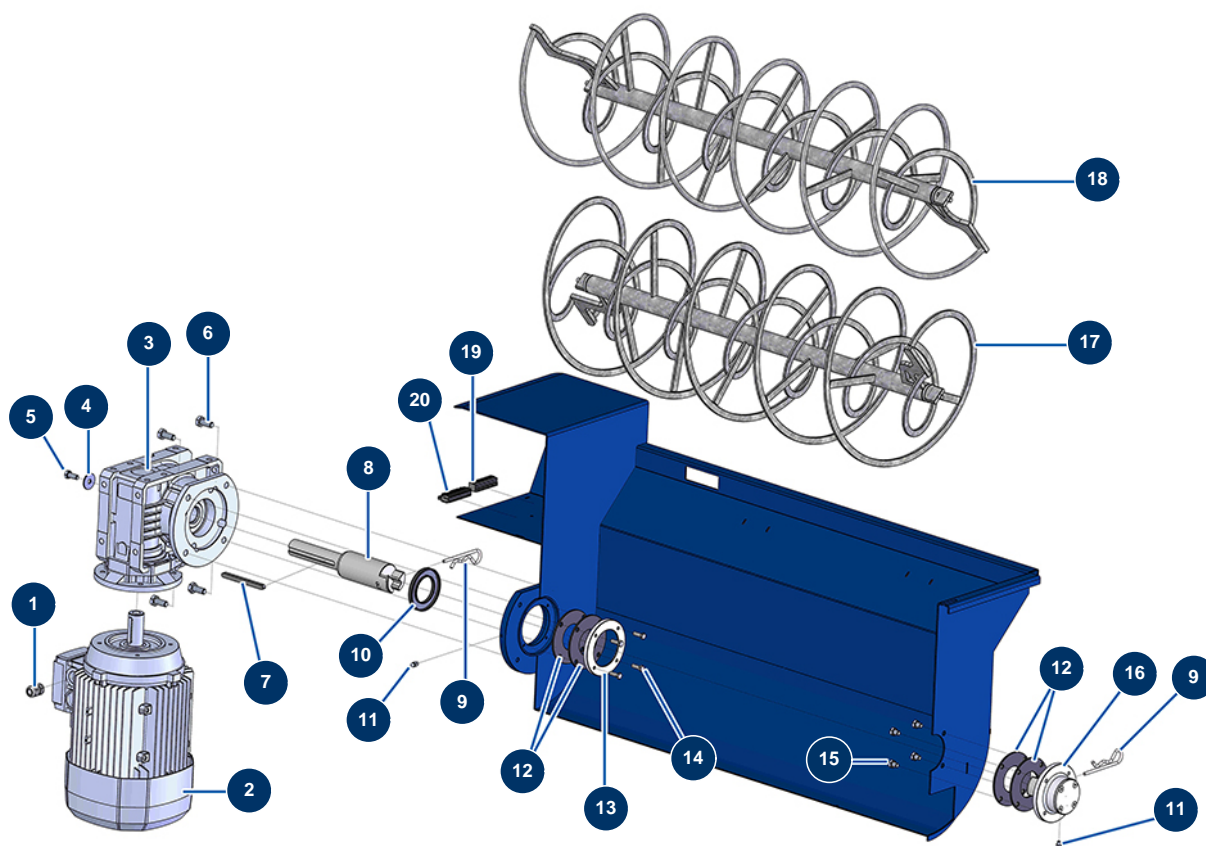


MIXPRO 100 - 400V TETRA sequential mixer - Transmission



Détails des pièces

Pos.	Référence	Désignation
1	1002837	PG 09 watertight cable gland
2	14271	Electric motor 4 kW - T112 - B14 - 1400 rpm - 400V
3	14274	Speed reducer 90° - T75 - R30 - B14/T112
4	80263	Very large inox washer Ø 8
5	30273	THEF 8 x 20 screw
6	30257	THEF 10 x 25 screw
7	90750	8 x 7 x 100 parallel key with round end for 24P et PT
8	M10619	MIXPRO 100 - 400V high-speed drive shaft
9	12157	Beta pin Ø 4.5 x 70
9	12157	Beta pin Ø 4.5 x 70
10	70107	Spi seal 50 x 80 x 8 for 24P,24PT, MPE300, COMPACT-PRO 30
11	60012	M6 straight lubricator
11	60012	M6 straight lubricator

Pos.	Référence	Désignation
12	12042	C.P mixer rapid transmission gasket
12	12042	C.P mixer rapid transmission gasket
13	M10065	Support washers for COMPACT-PRO mixer gasket
14	14539	THEF 6 x 20 screw
15	30298	THEF 8 x 10 screw
16	M07013	CP MIXER complete transmission bearing
17	C20231	MIXPRO 100 mixer propeller
18	C22367	MIXPRO 100 reinforced propeller
19	11771	12 pins male connector
20	11772	12 pins female connector