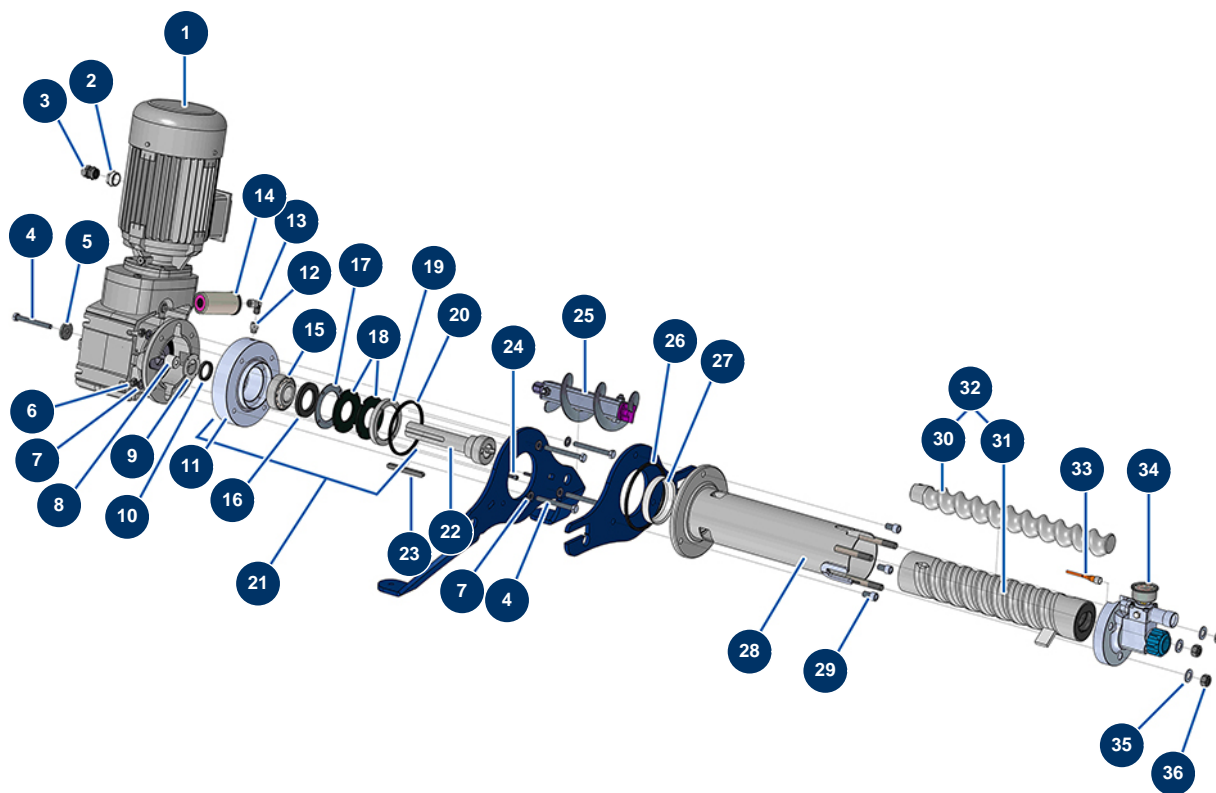


## JETPRO 160 complete atomizer - 400V TETRA - Transmission (from 07/2021)



### Détails des pièces

| Pos. | Référence | Désignation   |
|------|-----------|---|
| 1    | 12788     | Geared motor 4 kW - T112 - R12,84 - 1400 rpm - 400V |
| 2    | 12814     | Cable gland reduction M 32-25                       |
| 3    | 80449     | Watertight cable gland of M 25                      |
| 4    | 12164     | THEF 10 x 100 screw                                 |
| 4    | 12164     | THEF 10 x 100 screw                                 |
| 5    | C22885    | 5   |
| 6    | 13978     | M10 inox nut  |
| 7    | 80261     | ø 10 inox medium washer                             |
| 7    | 80261     | ø 10 inox medium washer                             |
| 8    | M10444    | Ring for JETPRO, JETBAG 160                         |
| 9    | C21066    | Ø 61 back seal holding washer for JETPRO            |
| 10   | 13219     | Spi seal 35 x 45 x 7                                |
| 11   | M10498    | 11  |

| Pos. | Référence    | Désignation   |
|------|--------------|---|
| 12   | 90773        | 1/4" MaleD x 1/4" FemaleD low-pressure nipple             |
| 13   | 12104        | 45° inox low-pressure elbow FemaleD 1/4 x MaleD 1/4       |
| 14   | 90639        | Automatic greaser   |
| 15   | 13660        | 35 x 80 x 31 thrust bearing for JETPRO                    |
| 16   | 70107        | Spi seal 50 x 80 x 8 for 24P,24PT, MPE300, COMPACT-PRO 30 |
| 17   | C21514       | 17  |
| 18   | 12507        | Bottom of tank seal for JETPRO 80                         |
| 19   | M10222       | Flange seal for JETPRO 80 & 120                           |
| 20   | 12506        | 4-lobes seal for JETPRO 80 flange                         |
| 21   | 13580        | SEW EUROPRO JETPRO, JETBAG 160 motor complete flange      |
| 22   | M10442       | Drive shaft for JETPRO & JETBAG 160                       |
| 23   | 13306        | 10 x 8 x 100 parallel key with round end                  |
| 24   | 90996        | 6 x 20 inox cylindrical head screw                        |
| 25   | 14869        | JETPRO 160 reinforced connecting rod                      |
| 26   | 12815        | 4-lobes seal for JETPRO / JETBAG 120 flange               |
| 27   | M10443       | 27  |
| 28   | 13319        | Stator holding kit for JETPRO, JETBAG 160                 |
| 29   | 12498        | 12 x 30 cylindrical head screw                            |
| 30   | MI7009107600 | EUROPRO JET 4 pump chromed rotor                          |
| 31   | MI3F00529500 | EUROPRO JET 4 BOOSTER-80SH pump stator                    |
| 32   | 30792        | EUROPRO JET 4 pump BOOSTER rotor/stator kit               |
| 33   | 12409        | M12 straight female connector with 2m cable               |
| 34   | 14908        | Nez pompe alu complet JETPRO 160 nouvelle version         |
| 35   | 30286        | ø 14 inox narrow washer                                   |
| 36   | 10036        | M 14 nut  |