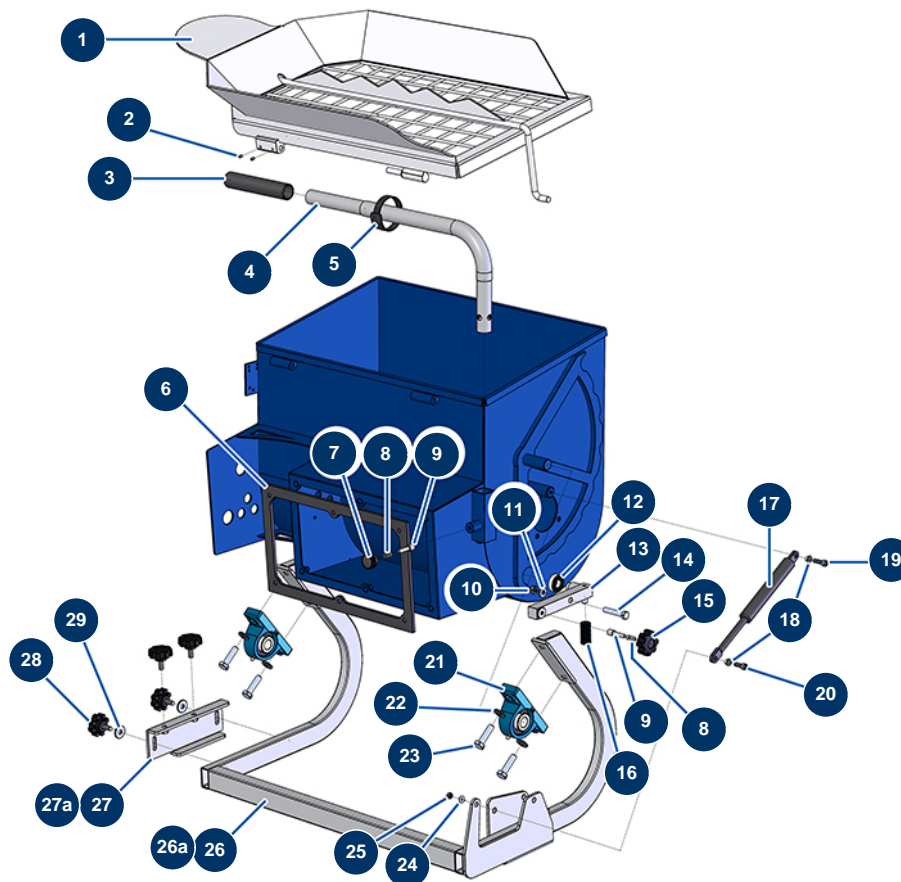


MIXPRO 80 CLASSIC sequential Mixer - Chassis



Détails des pièces

Pos.	Référence	Désignation
1	11488	COMPACT-PRO mixer grid
2	1010359	8 x 8 stainless steel socket head screw with pointed tip
3	90255	Arm handle for EUROPRO 24P, E50 and E100
4	11507	MIXPRO 80 mixer arm
5	12410	Self-gripping collar with loop 12,7 x 228 mm
6	12844	C.P IDEAL MIXER with card electrical box gasket
7	20001	EUROPRO 30+,36 and 40 compressor arm button
8	60040	Compressor trigger spring
8	60040	Compressor trigger spring
9	M10047	C.P mixer tank trigger
9	M10047	C.P mixer tank trigger
10	13980	M 8 nylstop inox nut
11	80260	ø 8 inox medium washer

Pos.	Référence	Désignation
12	1010323	C.P mixer bearing
13	11530	CP30 MIXER roller support
14	11798	THEF 8 x 45 screw
15	11515	Plastic thumb wheel M8
16	11495	CP mixer roller spring
17	11497	CP mixer gas spring
18	M10048	Mixer gas spring spacer
19	90996	6 x 20 inox cylindrical head screw
20	80614	6 x 25 inox cylindrical head screw
21	11502	COMPACT-PRO mixer bearing
22	80261	ø 10 inox medium washer
23	30259	THEF 10 x 40 screw
24	70087	ø 6 inox narrow washer
25	14217	M 6 nylstop inox nut
26	11485	COMPACT-PRO mixer chassis before 02/2020
26a	C22731	COMPACT-PRO mixer chassis from 02/2020
27	11484	COMPACT-PRO mixer fixing support before 02/2020
27a	C22729	COMPACT-PRO mixer fixing support from 02/2020
28	11514	Plastic thumb wheel M8 x 20
29	80263	Very large inox washer Ø 8