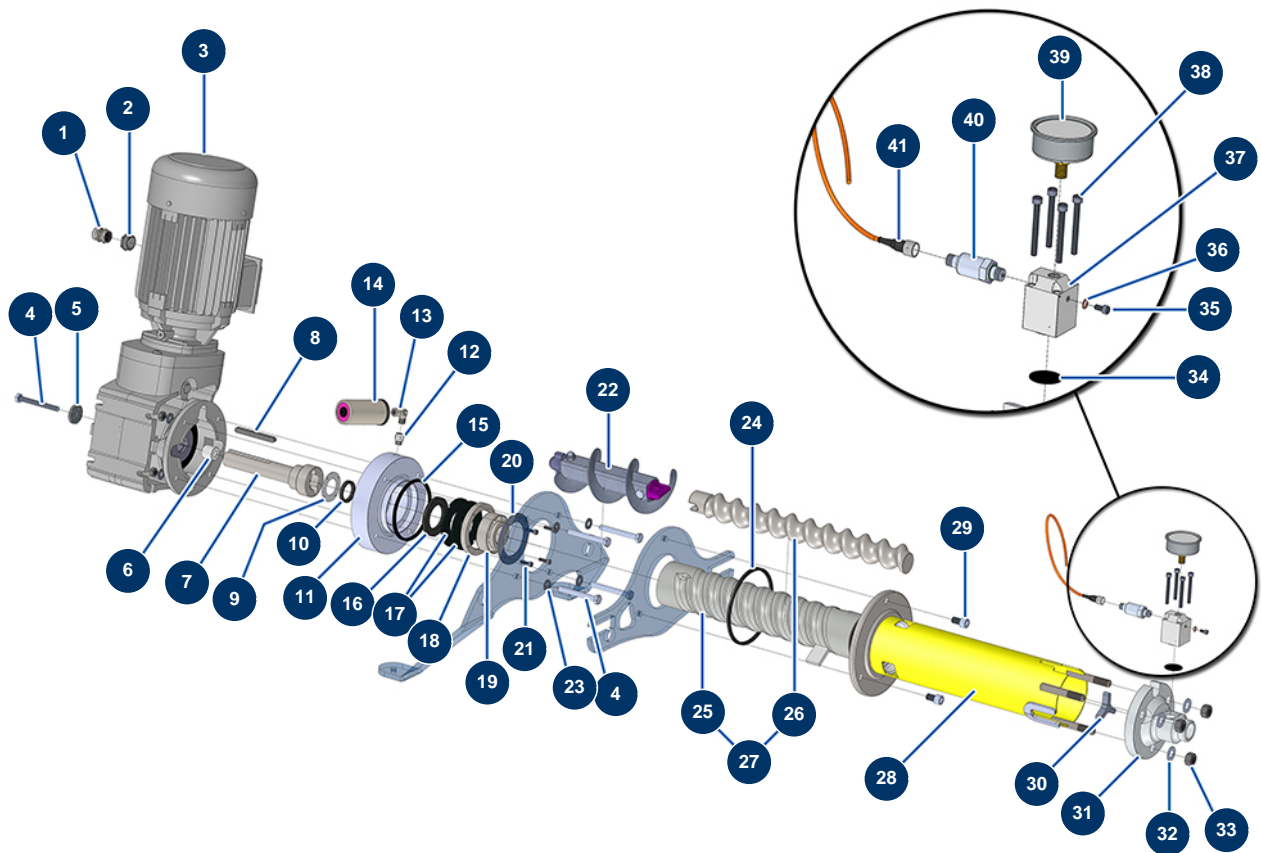


**JETPRO 160 complete atomizer - 400V TETRA - Transmission (up to 06/2021)**



**Détails des pièces**

Pos.	Référence	Désignation
1	80449	Watertight cable gland of M 25
2	12814	Cable gland reduction M 32-25
3	12788	Geared motor 4 kW - T112 - R12,84 - 1400 rpm - 400V
4	12164	THEF 10 x 100 screw
4	12164	THEF 10 x 100 screw
5	C22885	5
6	M10444	Ring for JETPRO, JETBAG 160
7	M10442	Drive shaft for JETPRO & JETBAG 160
8	13306	10 x 8 x 100 parallel key with round end
9	C21066	Ø 61 back seal holding washer for JETPRO
10	13219	Spi seal 35 x 45 x 7
11	M10441	Motor spacer flange for JETPRO, JETBAG 160
12	90773	1/4" MaleD x 1/4" FemaleD low-pressure nipple

Pos.	Référence	Désignation
13	12104	45° inox low-pressure elbow FemaleD 1/4 x MaleD 1/4
14	90639	Automatic greaser
15	12506	4-lobes seal for JETPRO 80 flange
16	70107	Spi seal 50 x 80 x 8 for 24P,24PT, MPE300, COMPACT-PRO 30
17	12507	Bottom of tank seal for JETPRO 80
18	M1022	18
19	13660	35 x 80 x 31 thrust bearing for JETPRO
20	C21514	20
21	90996	6 x 20 inox cylindrical head screw
22	14869	JETPRO 160 reinforced connecting rod
23	80261	ø 10 inox medium washer
24	12815	4-lobes seal for JETPRO / JETBAG 120 flange
25	MI3F00529500	EUROPRO JET 4 BOOSTER-80SH pump stator
26	MI7009107600	EUROPRO JET 4 pump chromed rotor
27	30792	EUROPRO JET 4 pump BOOSTER rotor/stator kit
28	13319	Stator holding kit for JETPRO, JETBAG 160
29	12498	12 x 30 cylindrical head screw
30	M10771	Ø62 pump head crosspiece
31	13524	Stator flange for EUROPRO JETPRO 160
32		32
33	10036	M 14 nut
34	12913	Pump nose manometer membrane for JETPRO 80, 120, JETBAG 120
35	12625	6 x 8 cylindrical head screw
36	12765	Copper seal for JETPRO 80 pump nose
37	M10351	Flange cap for JETPRO 120
38	12320	CP Ideal mixer complete FORWARD-0-REVERSE button
39	90433	63 mm oil manometer 1/4 conical 0 to 400 bar
40	12560	250 bar pressure sensor for JETPRO and JETBAG 120
41	12409	M12 straight female connector with 2m cable