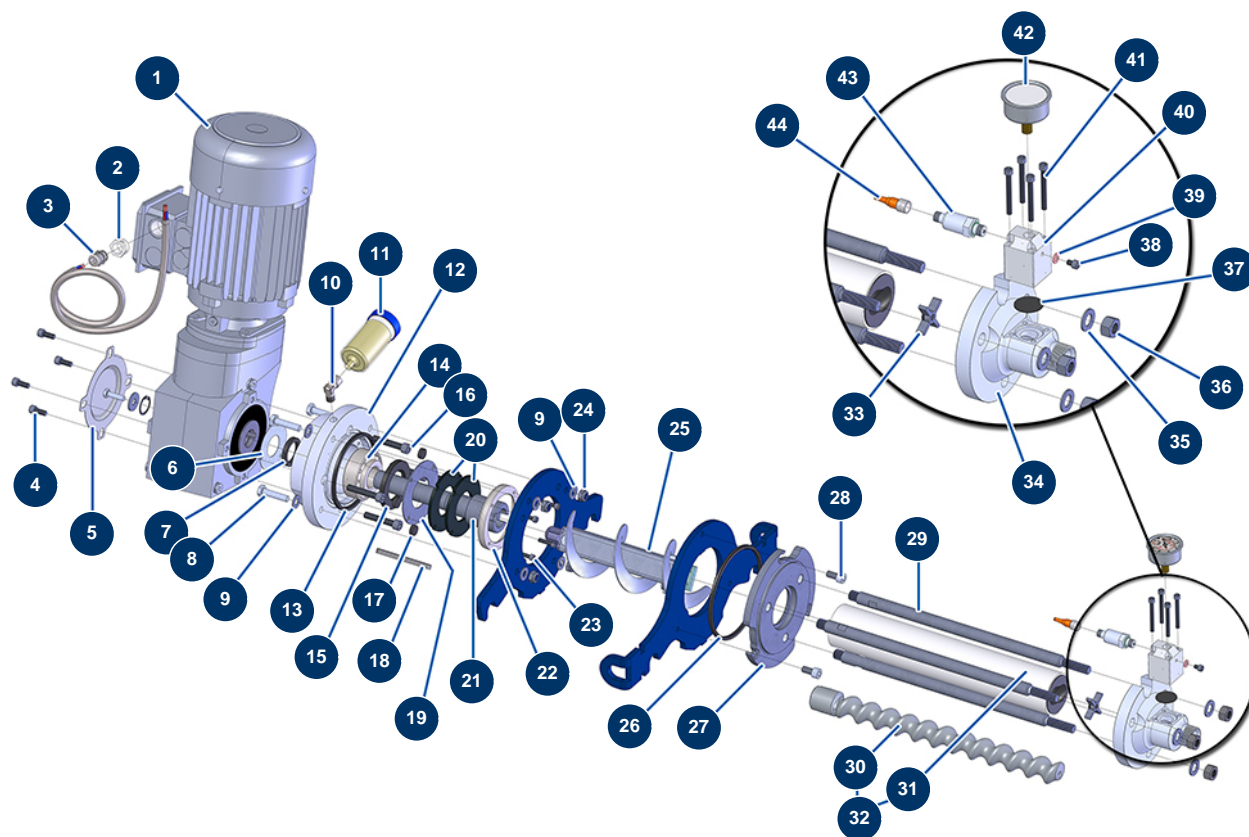


## JETPRO 120-7 complete atomizer - Transmission (up to 09/2021)



### Détails des pièces

Pos.	Référence	Désignation
1	12787	Geared motor 3 kW - T100 - R6,67 - 1400 rpm - 400V
2	80446	Cable gland reduction M 25-11
3	30040	Nickel plated watertight cable gland of 11 CEM
4	90157	M6 x 16 cylindrical head screw - CP 60
5	C20979	Reduction gear metallic cover for JETPRO 120
6	C21713	JETPRO spi gasket holding washer Ø 79,5
7	13755	Spi seal 35 x 47 x 7
8	12441	THEF 10 x 45 screw
9	80261	Ø 10 inox medium washer
9	80261	Ø 10 inox medium washer
10	30121	90° low-pressure elbow 1/4 MaleC x 1/4 FemaleD
11	90639	Automatic greaser
12	M10419	NORD Motor spacer flange for JETPRO 120

Pos.	Référence	Désignation
13	12506	4-lobes seal for JETPRO 80 flange
14	13660	35 x 80 x 31 thrust bearing for JETPRO
15	70107	Spi seal 50 x 80 x 8 for 24P,24PT, MPE300, COMPACT-PRO 30
16	13532	10 x 55 cylindrical head screw
17	13683	Rubber pad ø 17 Thickness 6 mm
18	90750	8 x 7 x 100 parallel key with round end for 24P et PT
19	C20822	Ø 105 spi seal holding washer for JETPRO
20	12507	Bottom of tank seal for JETPRO 80
21	M10348	Drive shaft for JETPRO 120 engine NORD
22	M10222	Flange seal for JETPRO 80 & 120
23	80614	6 x 25 inox cylindrical head screw
24	13981	M 10 nylstop inox nut
25	14868	JETPRO 120-7 reinforced connecting rod
26	12815	4-lobes seal for JETPRO / JETBAG 120 flange
27	M10350	JETPRO 120 flange
28	80668	10 x 20 cylindrical head screw
29	M10352	Fastening tie rod for JETPRO 120 and JETBAG 120
30	MI7009050200	EUROPRO JET 3 chromed pump rotor with bayonet head
31	MI3F00503011	EUROPRO JET 3-80SH pump stator
32	30629	EUROPRO JET 3 pump rotor/stator kit
33	M10770	Ø48 pump head crosspiece
34	M10353	Stator flange for JETPRO 120
35	30286	ø 14 inox narrow washer
36	10036	M 14 nut
37	12913	Pump nose manometer membrane for JETPRO 80, 120, JETBAG 120
38	12625	6 x 8 cylindrical head screw
39	12765	Copper seal for JETPRO 80 pump nose
40	M10351	Flange cap for JETPRO 120
41	12820	6 x 55 cylindrical head screw
42	12623	50 mm axial manometer 1/4" conical - 0 to 160 bar
43	12560	250 bar pressure sensor for JETPRO and JETBAG 120
44	12409	M12 straight female connector with 2m cable