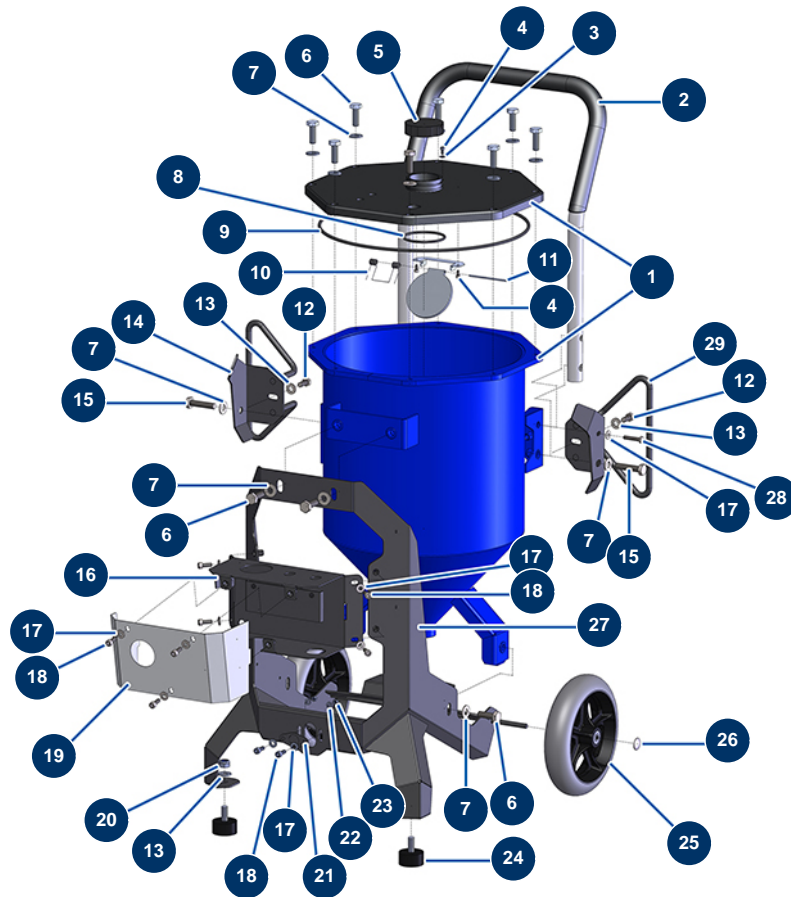


Sandblaster SANDBLASTPRO 30 L - Chassis



Détails des pièces

Pos.	Référence	Désignation
1	14711	SANDBLASTPRO sandblaster 30 L tank
2	90804	EUROPRO 36 and 40 compressor arm
3	11736	ø 4 inox medium washer
4	310013	M4 x 8 cylindrical head screw cylindrical head screw
4	310013	M4 x 8 cylindrical head screw cylindrical head screw
5	M10765	5
6	30258	THEF 10 x 30 screw
6	30258	THEF 10 x 30 screw
6	30258	THEF 10 x 30 screw
7	80261	ø 10 inox medium washer
7	80261	ø 10 inox medium washer
7	80261	ø 10 inox medium washer
7	80261	ø 10 inox medium washer

Pos.	Référence	Désignation
7	80261	∅ 10 inox medium washer
8	14767	63 x 5 O-ring
9	14768	335 x 5 O-ring
10	14757	
11	M10745	11
12	30273	THEF 8 x 20 screw
12	30273	THEF 8 x 20 screw
13	80260	∅ 8 inox medium washer
13	80260	∅ 8 inox medium washer
13	80260	∅ 8 inox medium washer
14	C22997	14
15	12441	THEF 10 x 45 screw
15	12441	THEF 10 x 45 screw
16	C22993	16
17	80259	∅ 6 medium washer
17	80259	∅ 6 medium washer
17	80259	∅ 6 medium washer
17	80259	∅ 6 medium washer
18	90157	M6 x 16 cylindrical head screw - CP 60
18	90157	M6 x 16 cylindrical head screw - CP 60
18	90157	M6 x 16 cylindrical head screw - CP 60
19	C22994	19
20	13981	M 10 nylstop inox nut
21	C23083	21
22	70085	∅ 5 narrow washer
23	11880	M 5 nylstop nut
24	30145	∅ 40 x 20 M10 stop
25	13939	Complete 200 wheel - axle of 8
26	90283	∅8 chromed clip
27	C22990	27
28	Nous consulter	28
29	C22999	29