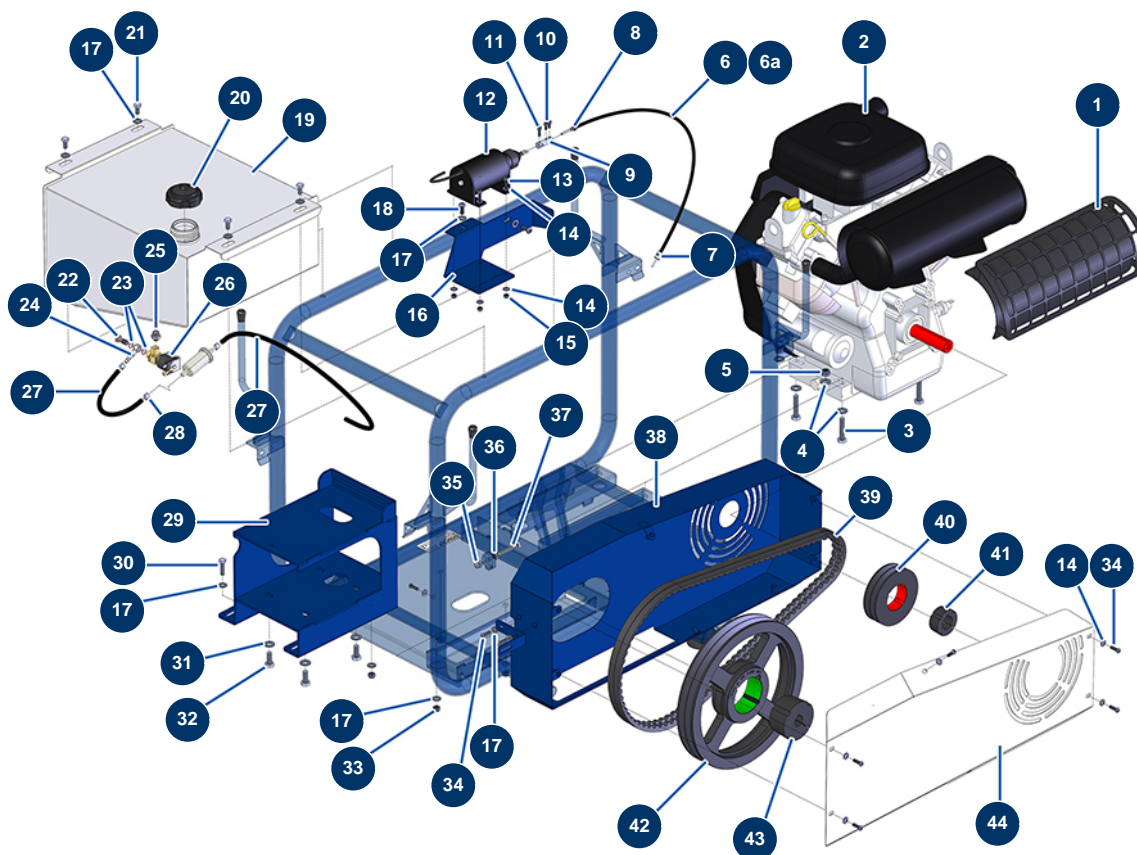


## EUROPROLAV 22-500 TH washer - Motorization



### Détails des pièces

Pos.	Référence	Désignation
1	C21701	500 bar washer exhaust protection grid
2	12668	VANGUARD 35 HP petrol motor
3	30260	THEF 10 x 50 screw
4	80261	ø 10 inox medium washer
5	13981	M 10 nylstop inox nut
6	12388	Gas lever steel cable sheath Ø 8 by the metre - C.P 60
6a	12387	Gas lever steel cable Ø 2.5 by the metre - C.P 60
7	M10648	22-500 washer motor accelerator cable clamp
8	12392	Motor sheath retainer - C.P 60
9	M10647	22-500 washer electrical accelerator cable clamp
10	90145	5 x 10 cylindrical head screw
11	90160	5 x 16 cylindrical head screw
12	80250	Electric automatic accelerator

Pos.	Référence	Désignation
13	90157	M6 x 16 cylindrical head screw - CP 60
14	80259	Ø 6 medium washer
14	80259	Ø 6 medium washer
14	80259	Ø 6 medium washer
15	14217	M 6 nylstop inox nut
16	C21695	16
17	80260	ø 8 inox medium washer
17	80260	ø 8 inox medium washer
17	80260	ø 8 inox medium washer
17	80260	ø 8 inox medium washer
17	80260	ø 8 inox medium washer
18	12111	8 x 20 inox cylindrical pan head screw
19	C20653	22-500 washer petrol tank
20	30634	Washer petrol tank plug 22-500
21	30295	THEF 8 x 16 screw
22	30757	22-500 washer 12V fuel solenoid valve capstan head screw
23	30759	22-500 washer 12V fuel solenoid copper gasket
24	30758	22-500 washer 12V fuel solenoid 7 corrugated banjo
25	11110	1/8" MaleC x 1/4" MaleC low-pressure nipple
26	30756	12V fuel solenoid valve, washer 22-500
27	12391	Gasoil supply hose Ø 7,5 mm (sold by the metre)
27	12391	Gasoil supply hose Ø 7,5 mm (sold by the metre)
28	60031	Ear clamp 11 x 13
29	C20651	29
30	11544	THEF 8 x 25 screw
31	80262	Very large inox washer Ø 6
32	30257	THEF 10 x 25 screw
33	13980	M 8 nylstop inox nut
34	11145	6 x 16 inox cylindrical pan head screw
34	11145	6 x 16 inox cylindrical pan head screw
35	30253	M 8 Inox cap nut
36	14075	M 8 inox nut
37	90998	THEF 8 x 50 screw
38	C20650	38

Pos.	Référence	Désignation
39	12726	
40	80207	17 pulley without double hub Ø 125
41	12724	Removable hub ø 1. 7/16 (36.5 mm) for 2012
42	12697	Pulley 17 without double hub ø 315
43	80206	Removable hub Ø 24 for 2517
44	C20643	44