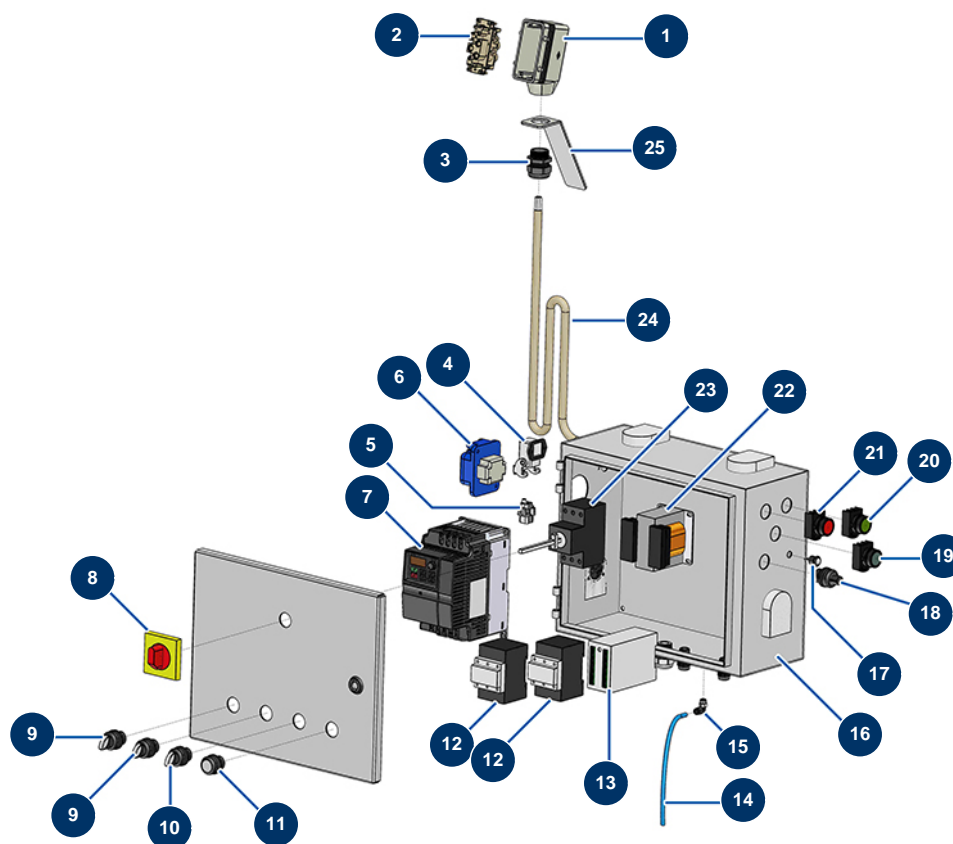


28 - 2,2 kW complete plaster continuous mixing machine - Electrical box (from 01/2021 to



Détails des pièces

Pos.	Référence	Désignation
1	MI3C02800100	Mobile Base
2	MI3C02700600	Female motor safety socket
3	MI3C04200200	PG16 cable gland
4	MI3C02800500	Angled base
5	MI3C02700200	Female insert 4 P + T
6	MI3C02601001	MIXPRO 28 straight socket F 2P + T 16A
7	MI3C05100107	MOSQUITO/SPRINTER, PLUS MONO & MIXPRO 28 inverter - 2,2KW
8	MI3C01300207	ABB main start stop button
9	MI3C01403110	2 position button for SPRINTER/MIXPRO 28 box
9	MI3C01403110	2 position button for SPRINTER/MIXPRO 28 box
10	MI3C01403100	3 position button for SPRINTER/MIXPRO 28 box
11	MI3C04000120	Pulse transparent indicator button for SPRINTER/MIXPRO 28 box
12	MI3C00700117	4 KW 24V AC coil contactor

Pos.	Référence	Désignation
12	MI3C00700117	4 KW 24V AC coil contactor
13	MI3C03202500	MOSQUITO, SPRINTER black box
14	MI3G50500100	Calibrated polyurethane tube ø 4 x 6 black by the metre
15	MI3G50400202	Legris angled connection F1/8" ø 6
16	MI3C00107100	Single metal case for machine MIXPRO 28, SPRINTER
17	MI8055000100	Neon bulb
18	MI3C00300400	Complete potentiometer for SPRINTER/MIXPRO 28 box
19	MI3C04000118	Complete blue impulse button
20	MI3C04000105	Green button ø 22 mm
21	MI3C04000104	Red button ø 22 mm
22	MI3C00500101	220 V transformer
23	MI3C01030108	Main switch
24	MI3C03900008	7 x 2,5 motor power cable by the metre
25	MI4906512000	Safety bracket for motor electrical socket