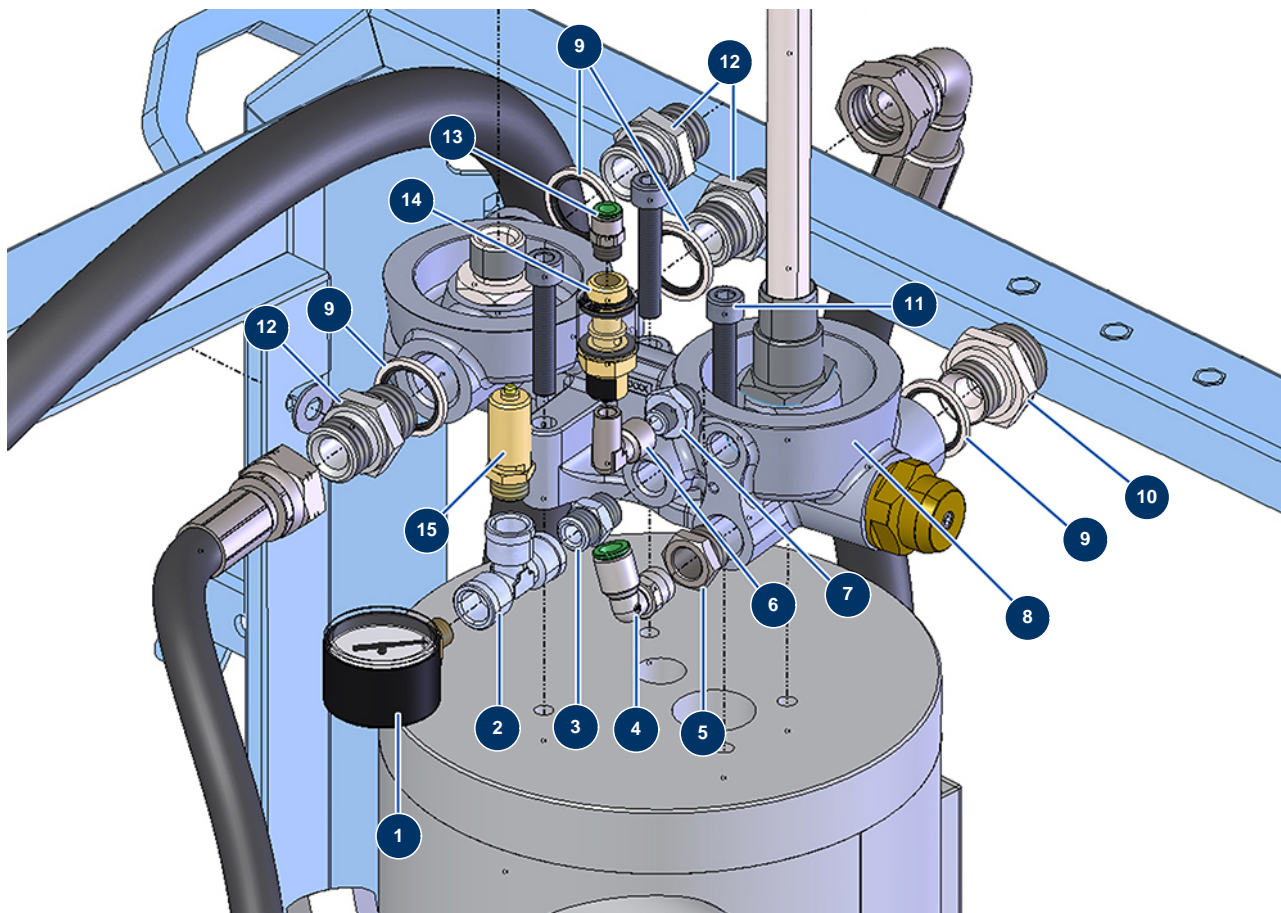


EUROPRO 150 TH Honda compressor - Regulator filtrating block



Détails des pièces

Pos.	Référence	Désignation
1	11202	Radial manometer 1/8" conical ø 40mm 0 to 4 bar
2	11489	2
3	90844	1/4" MaleD x 1/4" MaleD low-pressure nipple
4	11152	M1/4 Ø 8 elbow push-in connector
5	90242	3/8" MaleC x 1/4" FemaleD low-pressure reduction
6	91169	Elbow BP 90° 1/8 MaleC x 1/8 FemaleD
7	11110	1/8" MaleC x 1/4" MaleC low-pressure nipple
8	14673	Filter block and regulator for compressor E150 TH
9	91032	Steel gasket for hollow screw with 1/2" lip
9	91032	Steel gasket for hollow screw with 1/2" lip
9	91032	Steel gasket for hollow screw with 1/2" lip
10	12733	1/2" MaleD x 3/4" MaleD high-pressure nipple
11	12247	8 x 45 cylindrical head screw

Pos.	Référence	Désignation
12	90627	1/2" MaleD x 1/2" MaleD high-pressure nipple
12	90627	1/2" MaleD x 1/2" MaleD high-pressure nipple
13	91038	Legris straight coupling M1/8 Ø 6
14	14676	Oil collector with non-return valve, compressor E150 TH
15	14678	Safety valve 1/4" compressor E150 TH