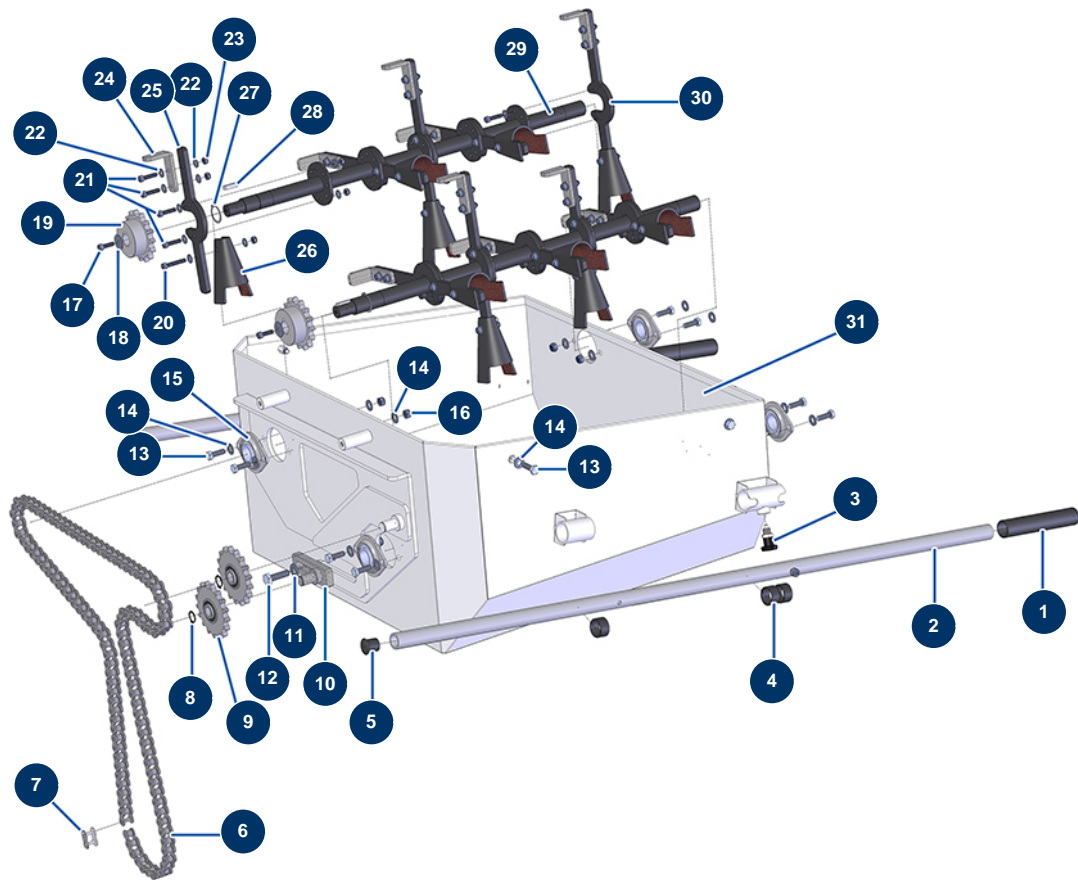


## TURBISOL 200 blowing machine - Hopper (up to 09/2021)



### Détails des pièces

Pos.	Référence	Désignation
1	90255	Arm handle for EUROPRO 24P, E50 and E100
2	C21326	JETMIX 80 / Blowing machine arm
3	13454	M12 X 1.5 indexage pin
4	13453	Cylindrical bearing 26/30 x 16
5	90870	Black plastic end cap for ø 25 round tube
6	14722	
7	14723	
8	11991	Ø 16 outer circlip
9	14727	17 teeth single sprocket pitch 15,875 for TURBISOL 200 blowing machine
10	C22894	
11	80261	ø 10 inox medium washer
12	12934	THEF 10 x 35 screw
13	11544	THEF 8 x 25 screw

Pos.	Référence	Désignation
13	11544	THEF 8 x 25 screw
14	80260	ø 8 inox medium washer
14	80260	ø 8 inox medium washer
14	80260	ø 8 inox medium washer
15	14729	
16	13980	M 8 nylstop inox nut
17	90996	6 x 20 inox cylindrical head screw
18	80262	Very large inox washer Ø 6
19	14726	15 teeth single sprocket pitch 15,875 for TURBISOL 200 blowing machine
20	12567	6 x 35 cylindrical head screw
21	80614	6 x 25 inox cylindrical head screw
22	80259	Ø 6 medium washer
22	80259	Ø 6 medium washer
23	14217	M 6 nylstop inox nut
24	C20692	TURBISOL mixing claw, 45 mm
25	C22966	25
26	11906	Blowing machine mixer foam-rubber square
27	13847	Ø 24 outer circlip
28	12000	6 x 6 x 29 parallel key with round end
29	C22952	TURBISOL 200 4-blades upper mixing shaft
30	C22965	30
31	C22893	