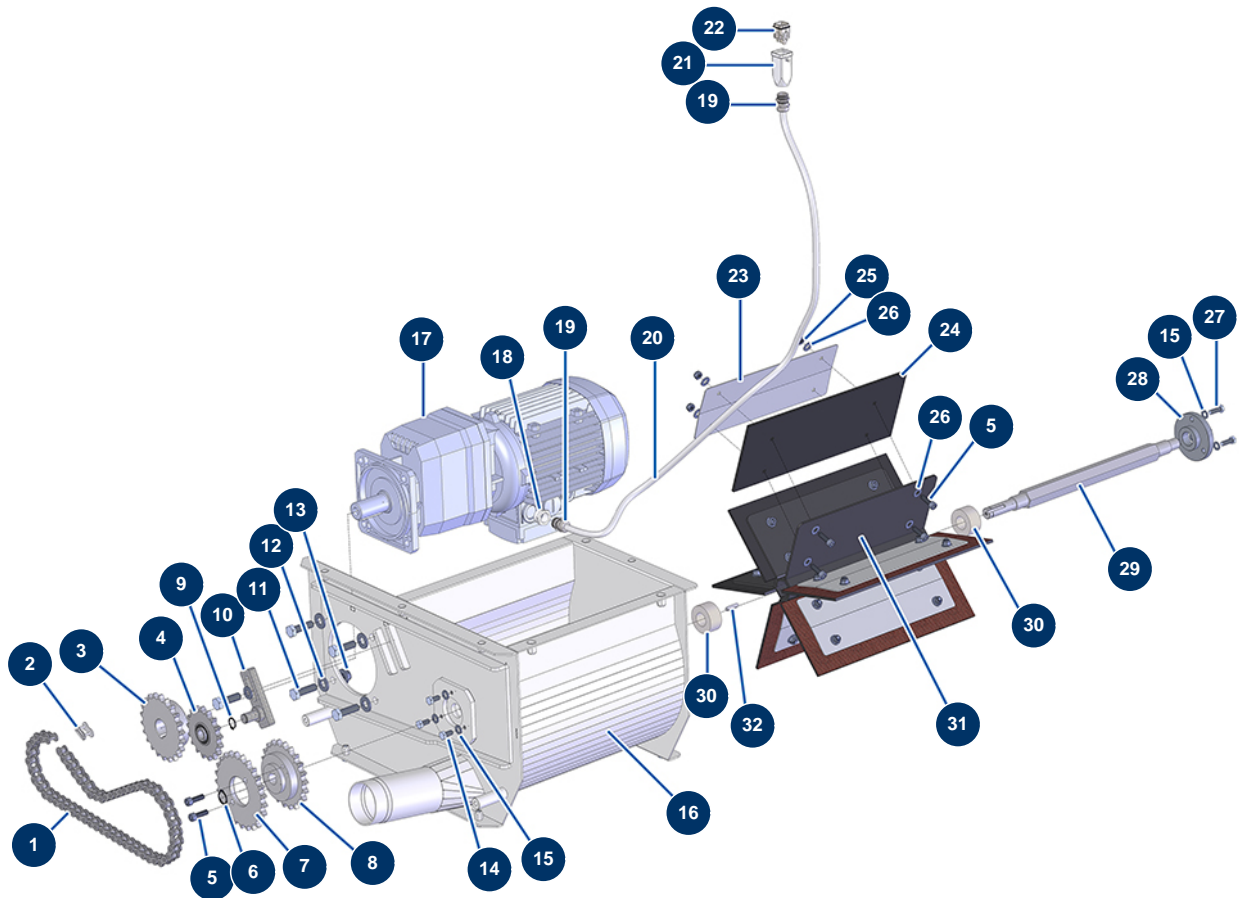


TURBISOL 200 blowing machine - Transmission (up to 09/2021)



Détails des pièces

Pos.	Référence	Désignation
1	14722	
2	14723	
3	14724	22 teeth single sprocket pitch 15,875 for TURBISOL 200 blowing machine
4	14727	17 teeth single sprocket pitch 15,875 for TURBISOL 200 blowing machine
5	12783	8 x 25 cylindrical head screw
5	12783	8 x 25 cylindrical head screw
6	12318	Ø 20 outer circlip
7	14728	
8	14725	21 teeth single sprocket pitch 15,875 for TURBISOL 200 blowing machine
9	11991	Ø 16 outer circlip
10	C22894	
11	12928	THEF 12 x 40 screw
12	14102	ø 12 inox medium washer

Pos.	Référence	Désignation
13	13981	M 10 nylstop inox nut
14	30295	THEF 8 x 16 screw
15	30256	∅ 8 inox narrow washer
15	30256	∅ 8 inox narrow washer
16	C22922	16
17	12059	Geared motor 1,5 kW - TC322 - R18,1 - 1400 rpm - 400V
18	80446	Cable gland reduction M 25-11
19	30082	Nickel plated watertight cable gland of 11
19	30082	Nickel plated watertight cable gland of 11
20	11964	H05VVF 4G1 grey electrical cable by the metre
21	11916	Blowing machine insulating cover 3 p + T
22	11913	Blowing machine male insert 4 p + T
23	C22957	
24	14732	TURBISOL 200 distributor rubber paddle
25	13980	M 8 nylstop inox nut
26	80260	∅ 8 inox medium washer
26	80260	∅ 8 inox medium washer
27	11544	THEF 8 x 25 screw
28	M10709	
29	M10728	TURBISOL 200 distributor shaft
30	14760	Felt gasket Ø 20 x 40 for TURBISOL 200 blowing machine
30	14760	Felt gasket Ø 20 x 40 for TURBISOL 200 blowing machine
31	C22956	TURBISOL 200 hexagonal rotating distributor
32	12000	6 x 6 x 29 parallel key with round end