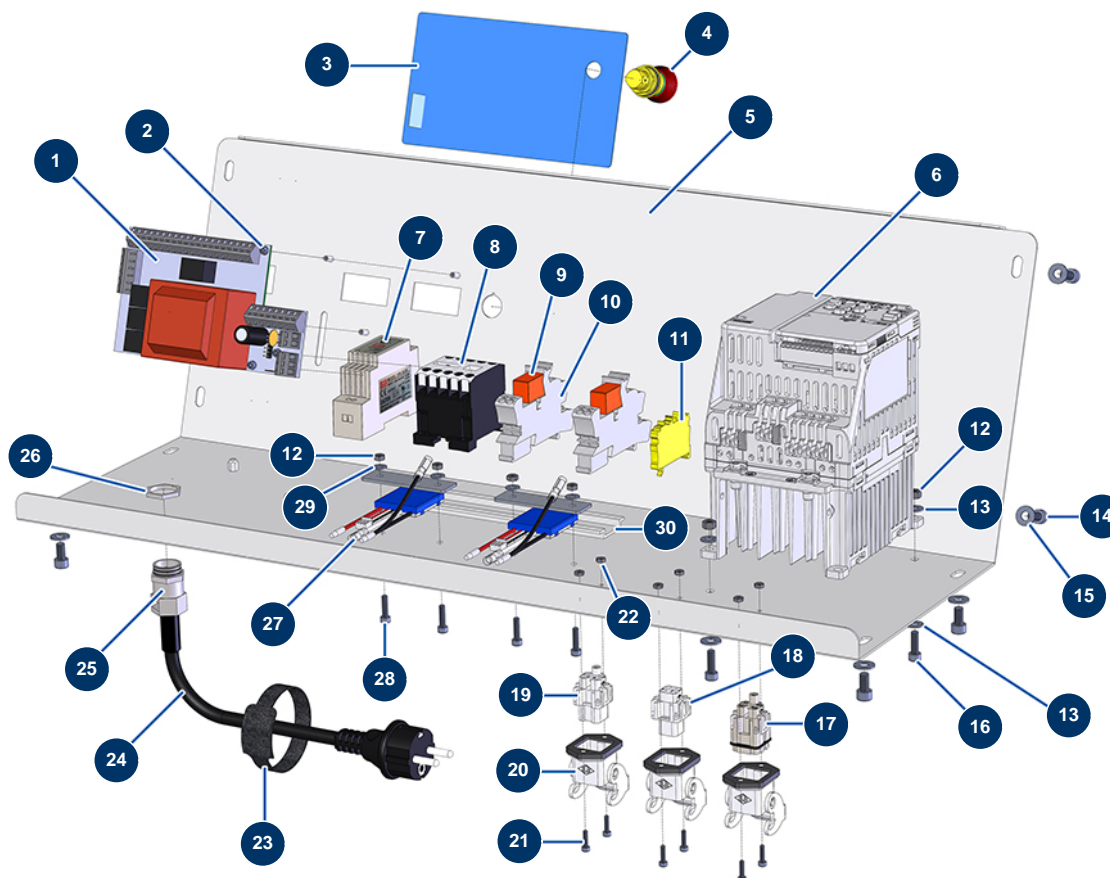


## TURBISOL 200 blowing machine - Electrical box (up to 09/2021)



### Détails des pièces

Pos.	Référence	Désignation
1	13004	POLYDRIVE electronic card - 260C version
2	13329	3 x 6 cylindrical head screw
3	13013	TURBISOL front with membrane
4	13015	Hanging EMERGENCY STOP button Ø16
5	C22962	
6	80458	Inverter 230 V - 1,5 kW
7	12711	Supply 230V-24VDC-15W
8	11918	Coil contactor 24 Volt AC
9	12752	Plug-in miniature relay 24V AC - 1RT
10	12751	Plug-in miniature relay base
11	30038	Yellow and green conductive block 6 mm <sup>2</sup>
12	10038	M 6 nut
12	10038	M 6 nut

Pos.	Référence	Désignation
13	11737	∅ 5 inox medium washer
13	11737	∅ 5 inox medium washer
14	12112	6 x 12 cylindrical head screw
15	80259	∅ 6 medium washer
16	90160	5 x 16 cylindrical head screw
17	11913	Blowing machine male insert 4 p + T
18	11912	Blowing machine female insert 3 p + T
19	11914	Female insert 4p + G
20	11915	Blowing machine insulating support 3 p + T - 1 lever
21	12249	3 x 12 cylindrical head screw
22	310016	M 3 nut
23	12410	Self-gripping collar with loop 12,7 x 228 mm
24	90214	Power cable with molded plug 3G 2,5 mm <sup>2</sup>
25	80451	Brass cable gland of 13 for power cable
26	30060	11mm cable gland nut
27	BE15644	MAXPRO 1600 mixer 230V electronic card
28	90137	4 x 16 cylindrical head screw
29	11736	∅ 4 inox medium washer
30	10265	