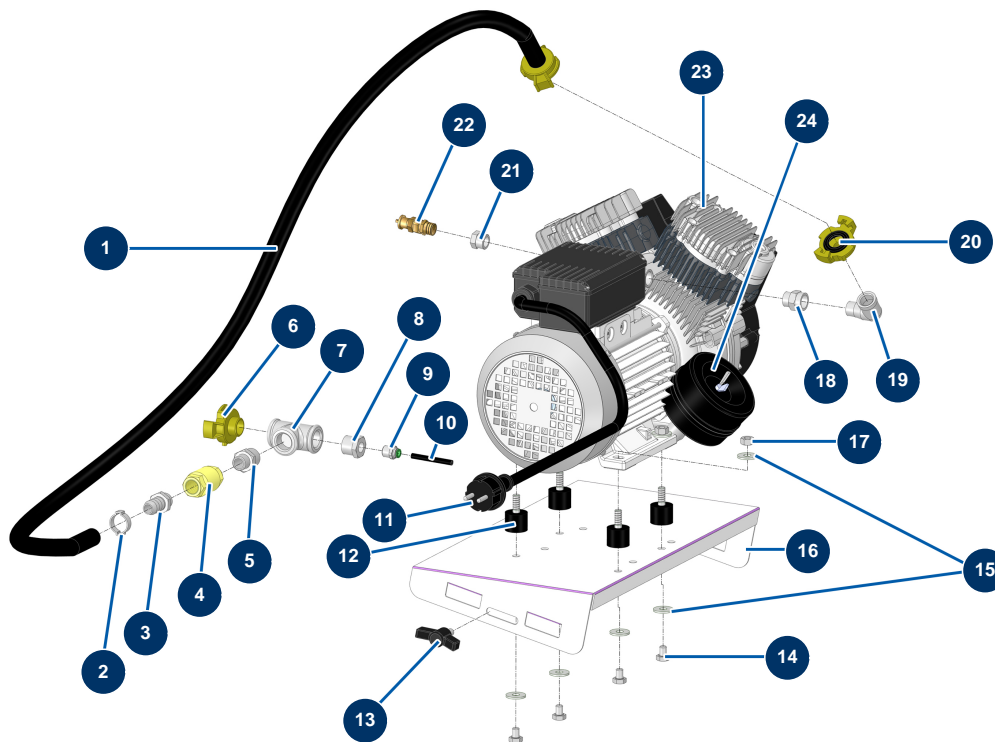


## MIXPRO 28 - 2,2 kW complete plaster continuous mixing machine - Air group



### Détails des pièces

Pos.	Référence	Désignation
1	MI3F00700820	Air hose with 1 GEKA coupling MIXPRO 28
2	14578	2
3	MI3G50300202	Threaded connection 3/8" corrugated ø 14
4	MI3G01300401	3/8" non-return valve
5	80339	3/8" MaleC x 1/2" MaleC low-pressure nipple
6	MI3A00100302	1/2" outer threaded Geka coupling
7	MI3G00513002	Galvanised T F1/2" x F1/2" x F1/2"
8	30119	1/2" MaleC x 1/4" FemaleD low-pressure reduction
9	91039	Legris straight coupling M1/4 Ø 6
10	30403	Calibrated polyurethane tube ø 4 x 6 black by the metre
11	30023	2P male electric socket + foam rubber T
12	MI3T00200106	Silentbloc ø 25 x 20 M-F
13	MI3T01505001	Mixer black Eye bolt diam 8

Pos.	Référence	Désignation
14	30298	THEF 8 x 10 screw
15	30292	ø 8 inox large washer
16	C23348	16
17	90440	M 8 zinc plated nut
18	91053	3/8" MaleD x 3/8" FemaleD low-pressure nipple
19	MI3G50300503	19
20	MI3A00100201	3/8" inner threaded Geka coupling
21	MI3G50300110	3/8" MaleC x 1/4" FemaleC galvanised reduction
22	MI3G01300304	Safety Valve 1/4 3 bar
23	14421	Two-cylinder compression head Oilless - 230V/50Hz single-phase
24	MI3B02620000	