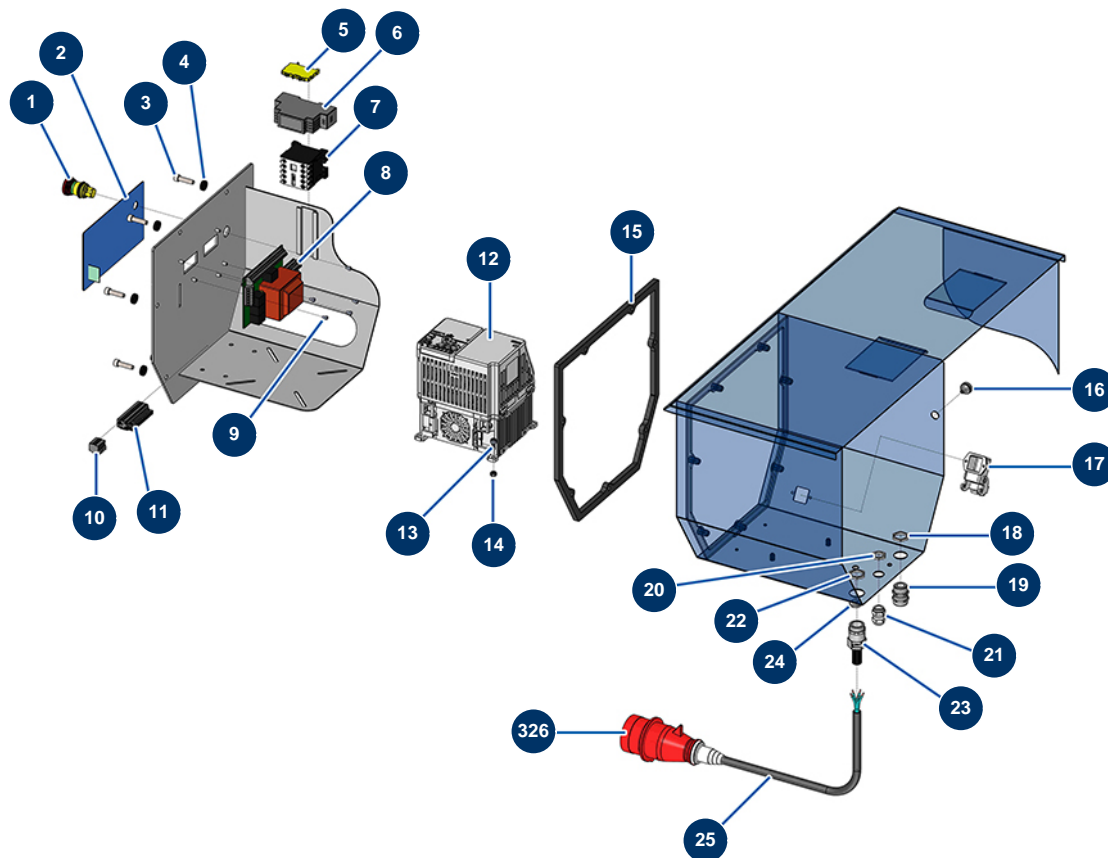


## JETPRO 160 complete atomizer - 400V TETRA - 4-phased electrical box



### Détails des pièces

Pos.	Référence	Désignation
1	13015	Hanging EMERGENCY STOP button Ø16
2	13009	Membrane front panel for JETPRO
3	80470	8 x 20 cylindrical head screw
4	80573	Hollow washer Ø 6
5	30038	Yellow and green conductive block 6 mm <sup>2</sup>
6	12711	Supply 230V-24VDC-15W
7	11918	Coil contactor 24 Volt AC
8	30731	Electronic board for JETPRO 120
9	310011	3 x 10 cylindrical head screw
10	12755	4-pin female connector
11	11771	12 pins male connector
12	12945	Inverter 400 V - 4 KW GA
13	90161	5 x 12 inox cylindrical head screw

Pos.	Référence	Désignation
14	10038	M 6 nut
15	12920	Gasket for EUROPRO JETPRO 160
16	11563	M 12 grey rubber cable gland
17	12543	Insulating bend socket base 3p + G - 1 lever
18	30054	Cable gland locknut of 13
19	80445	Watertight cable gland of M16
20	30333	Cable gland locknut of 11 CEM
21	30040	Nickel plated watertight cable gland of 11 CEM
22	11327	Cable gland locknut of M16
23	80397	Water exhaust cork for electrical box
24	12774	Shielded cable 4 x 2,5 by the metre
25	12323	Male electrical plug 3P + N + G 16A with phase switch
326		326