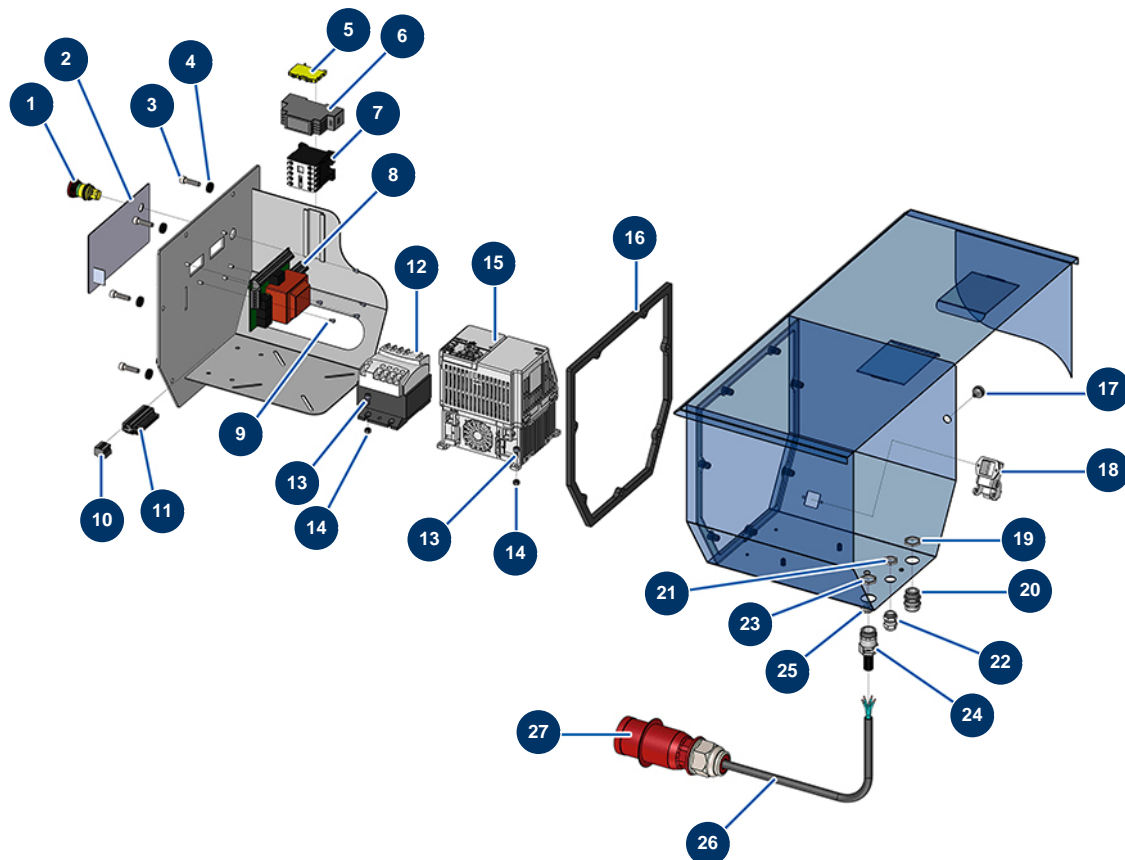


JETPRO 160 complete atomizer - 400V TETRA - 3-phased electrical box



Détails des pièces

Pos.	Référence	Désignation
1	13015	Hanging EMERGENCY STOP button Ø16
2	13009	Membrane front panel for JETPRO
3	80470	8 x 20 cylindrical head screw
4	80573	Hollow washer Ø 6
5	30038	Yellow and green conductive block 6 mm ²
6	12711	Supply 230V-24VDC-15W
7	11918	Coil contactor 24 Volt AC
8	30731	Electronic board for JETPRO 120
9	310011	3 x 10 cylindrical head screw
10	12755	4-pin female connector
11	11771	12 pins male connector
12	13218	400/230 V transformer - 100VA
13	90161	5 x 12 inox cylindrical head screw

Pos.	Référence	Désignation
13	90161	5 x 12 inox cylindrical head screw
14	10038	M 6 nut
14	10038	M 6 nut
15	12945	Inverter 400 V - 4 KW GA
16	12920	Gasket for EUROPRO JETPRO 160
17	11563	M 12 grey rubber cable gland
18	12543	Insulating bend socket base 3p + G - 1 lever
19	30054	Cable gland locknut of 13
20	80445	Watertight cable gland of M16
21	30333	Cable gland locknut of 11 CEM
22	30040	Nickel plated watertight cable gland of 11 CEM
23	11327	Cable gland locknut of M16
24	11196	Nickel plated watertight cable gland of 13 CEM
25	80397	Water exhaust cork for electrical box
26	12774	Shielded cable 4 x 2,5 by the metre
27	12323	Male electrical plug 3P + N + G 16A with phase switch