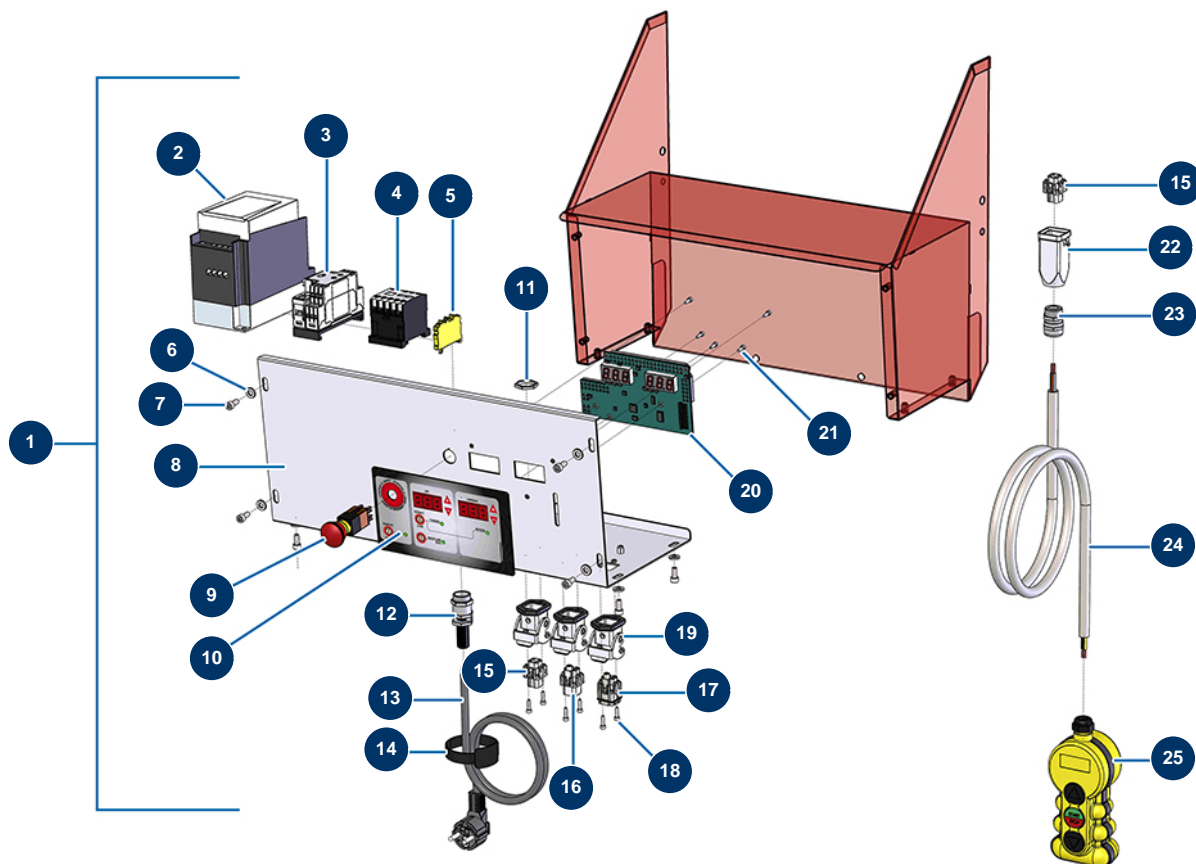


TURBISOL 56/2 blowing machine - Electrical box



Détails des pièces

Pos.	Référence	Désignation
1	14520	Complete membrane electrical box for TURBISOL 56/2
2	12098	Inverter 230 V - 0,55 KW
3	14866	12A/230V dimmer for TURBISOL 56/112
4	11918	Coil contactor 24 Volt AC
5	30038	Yellow and green conductive block 6 mm ²
6	30290	ø 5 large washer
7	90160	5 x 16 cylindrical head screw
8	C20620	Membrane electrical box door for TURBISOL 112/2 & 164/2
9	13015	Hanging EMERGENCY STOP button Ø16
10	13013	TURBISOL front with membrane
11	30060	11mm cable gland nut
12	80450	cable gland for 11mm supply cable
13	90180	Supply cable with moulded plug 3G 1,5 mm ²

Pos.	Référence	Désignation
14	12410	Self-gripping collar with loop 12,7 x 228 mm
15	11914	Female insert 4p + G
15	11914	Female insert 4p + G
16	11912	Blowing machine female insert 3 p + T
17	11913	Blowing machine male insert 4 p + T
18	12249	3 x 12 cylindrical head screw
19	11915	Blowing machine insulating support 3 p + T - 1 lever
20	30676	TURBISOL 56 & CARDISOL 2 blowing machine electronic card
21	310011	3 x 10 cylindrical head screw
22	11916	Blowing machine insulating cover 3 p + T
23	30082	Nickel plated watertight cable gland of 11
24	11919	H05VVF 4G1 grey electrical cable x 25 metres
25	11921	Blowing machine 2-button wired remote control box