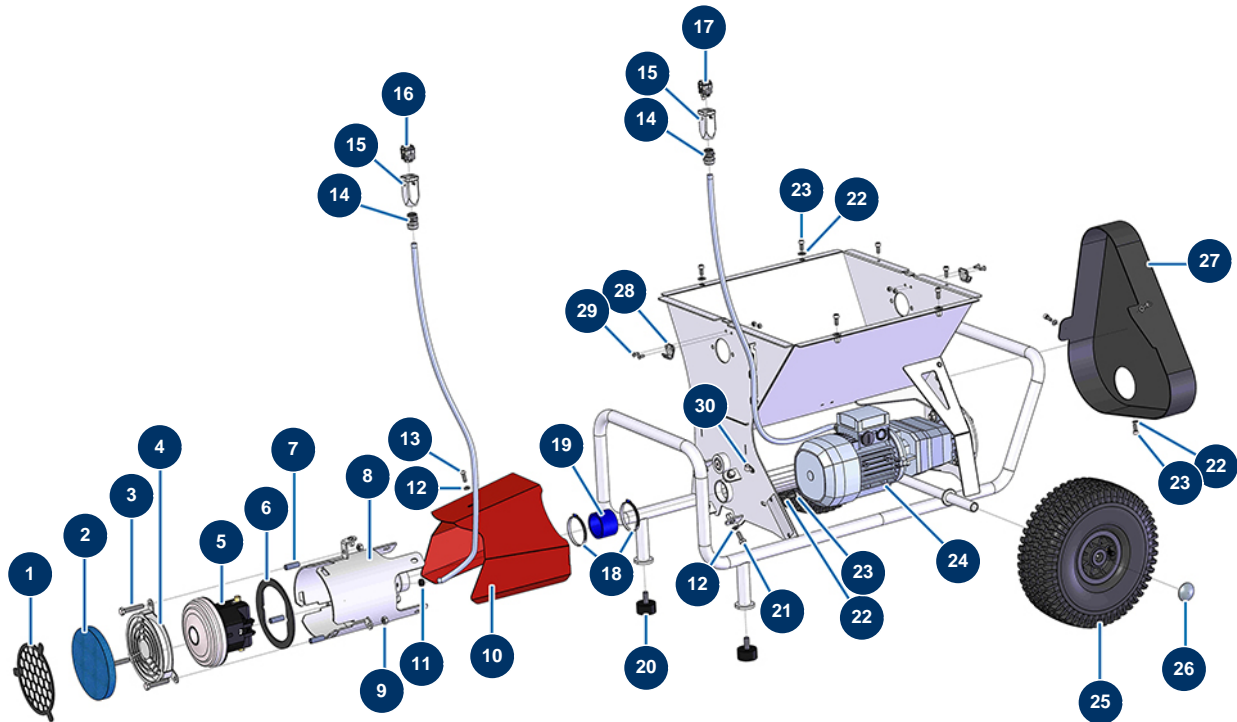


TURBISOL 56/2 blowing machine - Chassis



Détails des pièces

Pos.	Référence	Désignation
1	C22584	TURBISOL 56 Evo 2 blowing machine filter grid
2	14545	Foam filter ø 146 Thickness 20 mm
3	11798	THEF 8 x 45 screw
4	C22582	TURBISOL 56 Evo 2 blowing machine turbine safety grid
5	13556	1-stage turbine - 230V
6	14546	TURBISOL 56 Evo 2 turbine bearing gasket
7	M10667	TURBISOL 56 Evo 2 blowing machine turbine spacer
8	C22579	TURBISOL 56 Evo 2 blowing machine turbine body
9	13980	M 8 nylstop inox nut
10	C22647	TURBISOL 56 Evo 2 blowing machine turbine carter
11	13399	Ø6 rubber grommet
12	80260	ø 8 inox medium washer
12	80260	ø 8 inox medium washer

Pos.	Référence	Désignation
13	12110	6 x 20 inox cylindrical pan head screw
14	30082	Nickel plated watertight cable gland of 11
14	30082	Nickel plated watertight cable gland of 11
15	11916	Blowing machine insulating cover 3 p + T
15	11916	Blowing machine insulating cover 3 p + T
16	11913	Blowing machine male insert 4 p + T
17	11911	Blowing machine male insert 3 p + T
18	11752	Worm gear clamp 50 x 70 x 9
19	11971	Blowing machine hose Ø 48 x Length 40 mm
20	30145	Ø 40 x 20 M10 stop
21	30273	THEF 8 x 20 screw
22	80259	Ø 6 medium washer
22	80259	Ø 6 medium washer
22	80259	Ø 6 medium washer
23	12112	6 x 12 cylindrical head screw
23	12112	6 x 12 cylindrical head screw
23	12112	6 x 12 cylindrical head screw
24	11908	Geared motor 0,55 kW - TC122 - R29,5 - 1400 rpm - 400V
25	90692	Complete wheel 300 shaft of 20
26	90281	Ø20 chromed clip
27	12845	TURBISOL 56 & 112 blowing machine pulley protective crankcase
28	15022	Adjustable toggle locking hook
29	90130	5 x 16 countersunk head screw
30	90266	Cable support Ø 7.9