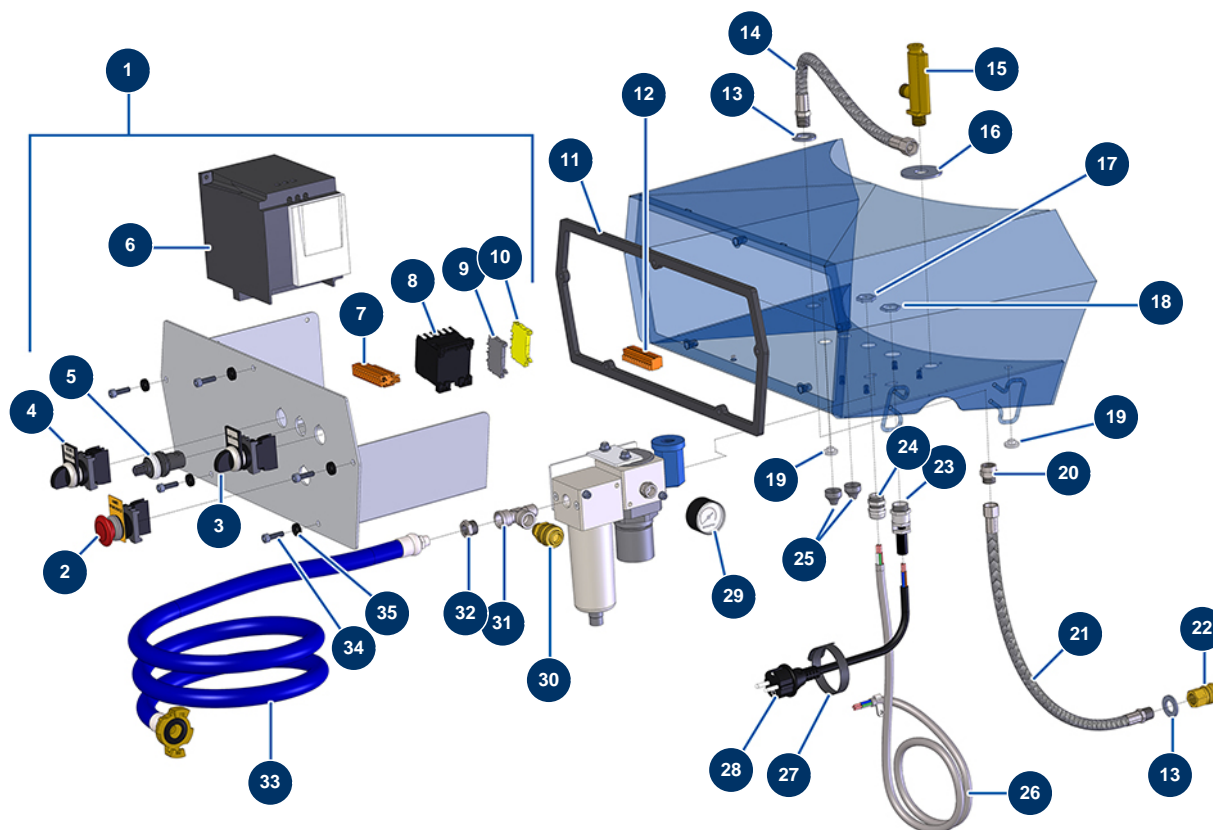


## DROPPRO 30P spraying machine - Electrical box and pneumatic circuit



### Détails des pièces

Pos.	Référence	Désignation
1	14582	Complete buttons electrical box for DROPPRO 30P Evo 2
2	90038	Complete EMERGENCY STOP button Ø 22
3	30014	Complete MANU-AUTO button
4	30034	Complete ON button
5	80645	Spraying machine complete potentiometer from MARCH 2003
6	80459	Inverter 230 V - 2.2 KW
7	11771	12 pins male connector
8	30011	230 Volt coil switch for sprayer
9	80467	Grey conductor block 4 mm <sup>2</sup>
10	30038	Yellow and green conductive block 6 mm <sup>2</sup>
11	14565	DROPPRO 30P electrical box gasket
12	11772	12 pins female connector
13	30288	Ø 16 inox narrow washer

Pos.	Référence	Désignation
13	30288	∅ 16 inox narrow washer
14	80171	Flowmeter air hose for 14P
15	30005	Flowmeter for EUROPRO 4-6-8-14 and 24 P
16	10003	∅ 16 large washer
17	30333	Cable gland locknut of 11 CEM
18	30054	Cable gland locknut of 13
19	80397	Water exhaust cork for electrical box
19	80397	Water exhaust cork for electrical box
20	91053	3/8" MaleD x 3/8" FemaleD low-pressure nipple
21	90488	ECO 130 flow meter air hose
22	70035	3/8" inner threaded female quick fit coupling
23	80451	Brass cable gland of 13 for power cable
24	30040	Nickel plated watertight cable gland of 11 CEM
25	11564	M 16 grey rubber cable gland
26	12774	Shielded cable 4 x 2,5 by the metre
27	12411	Self-gripping collar 20 x 330 mm
28	90214	Power cable with molded plug 3G 2,5 mm <sup>2</sup>
29	80023	Axial manometer 1/8 conical 40 mm 0 to 10 bar
30	80081	Female quick fit coupling outer threaded 3/8" Ø 6
31	12530	M3/8" x F3/8" x F3/8" low pressure T
32	90242	3/8" MaleC x 1/4" FemaleD low-pressure reduction
33	90543	6-8-14 and 24 P machine supply air hose
34	90996	6 x 20 inox cylindrical head screw
35	80573	Hollow washer Ø 6