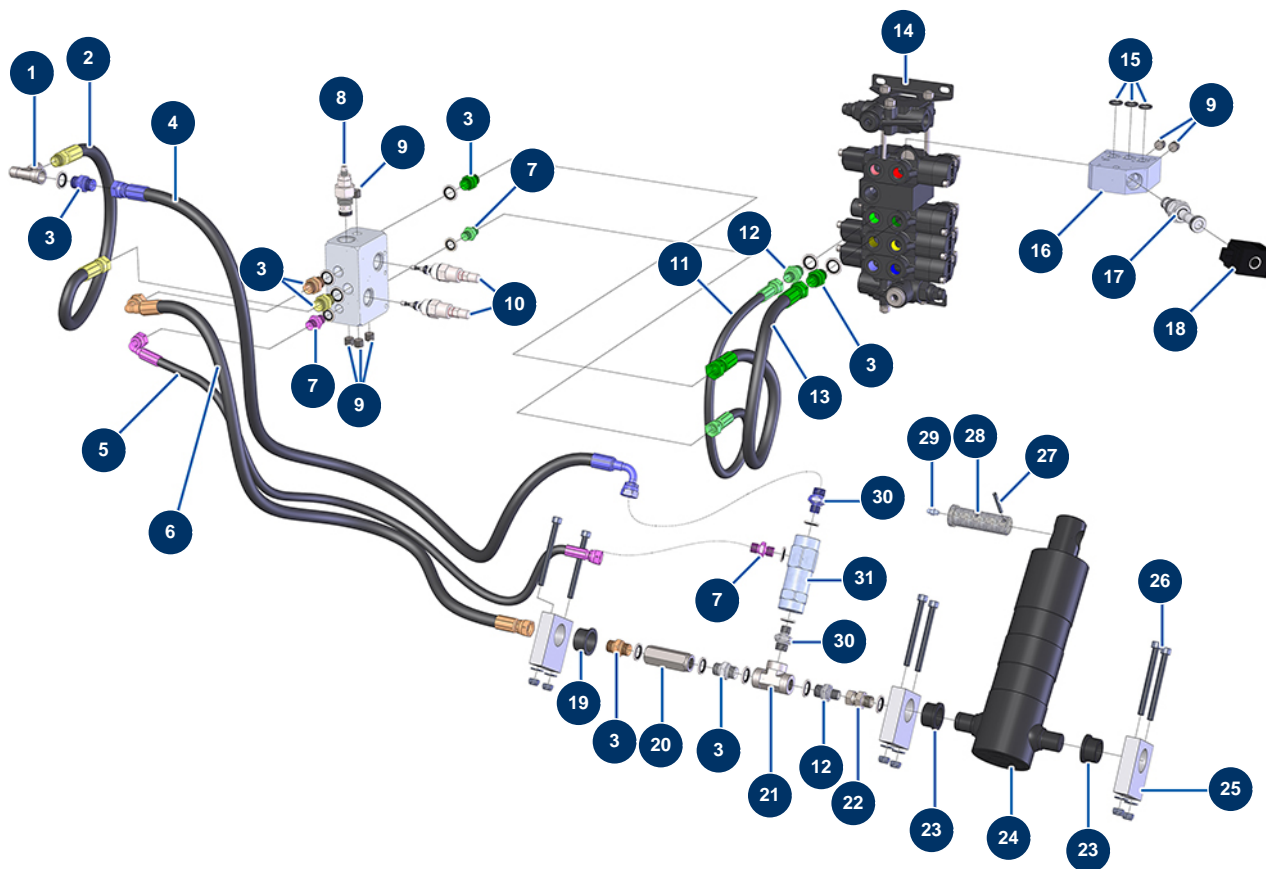


X-PRO D80 spraying machine - Hydraulic (regulation)



Détails des pièces

Pos.	Référence	Désignation
1	12530	M3/8" x F3/8" x F3/8" low pressure T
2	13059	Flexible hose 200 - cylinder block return/hydraulic tank - CP 60
3	90698	3/8" MaleD x 3/8" MaleD high-pressure nipple
3	90698	3/8" MaleD x 3/8" MaleD high-pressure nipple
3	90698	3/8" MaleD x 3/8" MaleD high-pressure nipple
3	90698	3/8" MaleD x 3/8" MaleD high-pressure nipple
3	90698	3/8" MaleD x 3/8" MaleD high-pressure nipple
3	90698	3/8" MaleD x 3/8" MaleD high-pressure nipple
3	90698	3/8" MaleD x 3/8" MaleD high-pressure nipple
4	14288	Flexible hose 227 - Lowering cylinder supply - P.C. 60
5	13065A	Flexible hose 206 - valve control - CP 60
6	12606	Flexible hose 42 - cylinder supply - C.P 60
7	90703	1/4" MaleD x 1/4" MaleD high-pressure nipple
7	90703	1/4" MaleD x 1/4" MaleD high-pressure nipple

Pos.	Référence	Désignation
7	90703	1/4" MaleD x 1/4" MaleD high-pressure nipple
8	13016	Mixer cartridge 45L/min single flow limiter - C.P 60
9	12576	1/4" MaleC Male high-pressure headless plug
9	12576	1/4" MaleC Male high-pressure headless plug
9	12576	1/4" MaleC Male high-pressure headless plug
10	13020	Cylinder pressure limiter - CP 60
11	13064	Flexible hose 205 - cylinder control - CP 60
12	90704	1/4" MaleD x 3/8" MaleD high-pressure nipple
12	90704	1/4" MaleD x 3/8" MaleD high-pressure nipple
13	13067A	Flexible hose 216 - control distributor/cylinder block - C.P 60
14	12332	5-way distributor with LP and integrated hopper Bypass - C.P 60
15	14420	13 x 3 O-ring
16	M10626	16
17	12912	12V bypass valve - CP 60
18	13316	12V coil by-pass valve in cartridge - C.P 60
19	14423	Bearing with flange 28/32 x 20 - CP 60 & 80
20	14268	HP 2 x 3/8"F non-return valve
21	80438	3/8" FemaleC x 3/8" FemaleC x 3/8" FemaleC high-pressure T
22	14287	16/150 MaleD x 3/8" FemaleC - CP 60 high-pressure nipple
23	14129	Bearing with flange 25/32 x 20 - CP 60 & 80
23	14129	Bearing with flange 25/32 x 20 - CP 60 & 80
24	12307	Mixer telescopic cylinder - C.P 60
25	M20015	Hopper cylinder support CP 60 & 80
26	14152	8 x 90 cylindrical head screw
27	12474	Cylinder axis elastic pin - CP 60
28	M10251	Cylinder axle - CP 60
29	60012	M6 straight lubricator
30	1057100	3/8" MaleC x 1/4" MaleD high-pressure nipple
30	1057100	3/8" MaleC x 1/4" MaleD high-pressure nipple
31	14599	Cylinder operated non-return valve - CP 60