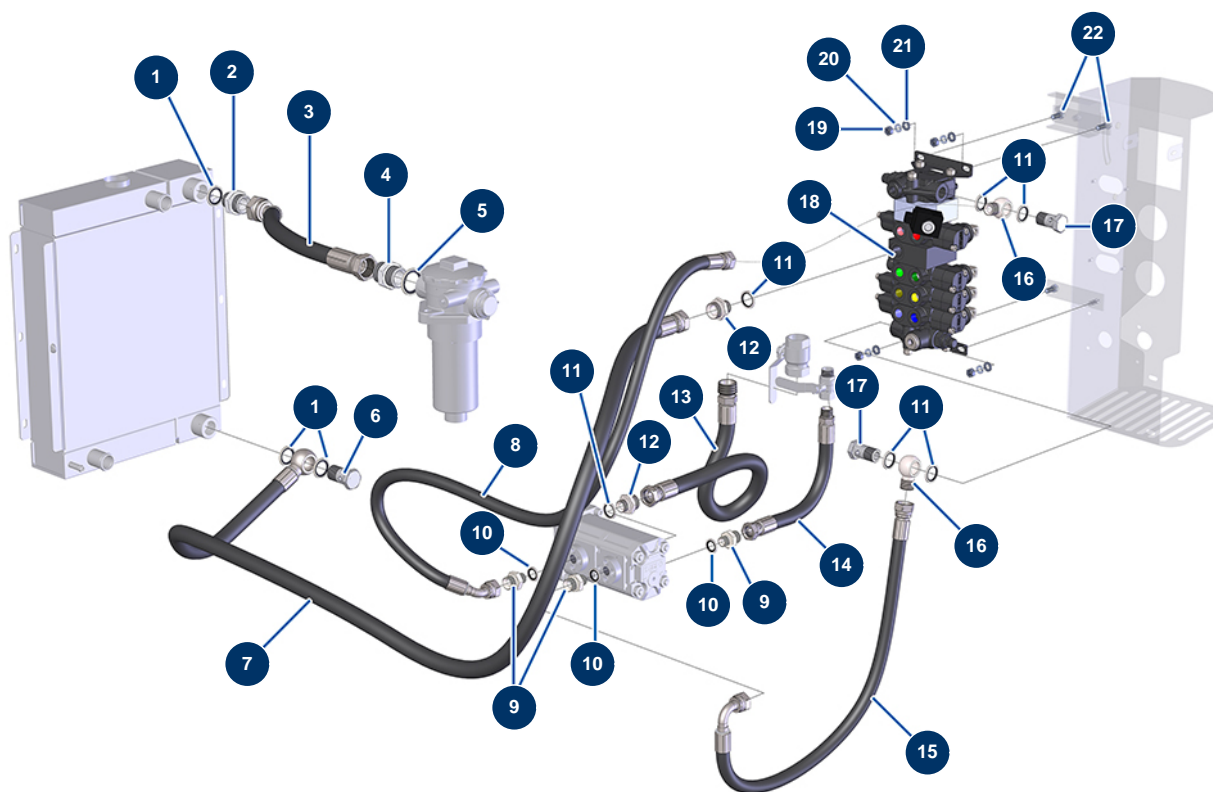


## X-PRO D80 spraying machine - Hydraulic (supply)



### Détails des pièces

Pos.	Référence	Désignation
1	12573	Steel gasket for 3/4" hollow screw with lip
1	12573	Steel gasket for 3/4" hollow screw with lip
2	12569	3/4" MaleD x 1" MaleD high-pressure nipple
3	14523A	Flexible hose 240 - BONDIOLI radiator return/hydraulic tank - C.P 60 2018
4	12568	1" MaleD x 1" MaleD high-pressure nipple
5	12572	Steel gasket for 1" hollow screw with lip
6	13307	3/4 HP drilled head screw
7	13305A	Flexible hose 220 - distributor/oil cooler - CP 60
8	13075	Flexible hose 215 - hopper circuit supply - CP 60
9	90872	1/2" MaleD x 3/8" MaleD high-pressure nipple
9	90872	1/2" MaleD x 3/8" MaleD high-pressure nipple
10	91031	Steel gasket for hollow screw with 3/8 lip
10	91031	Steel gasket for hollow screw with 3/8 lip

Pos.	Référence	Désignation
10	91031	Steel gasket for hollow screw with 3/8 lip
11	91032	Steel gasket for hollow screw with 1/2" lip
11	91032	Steel gasket for hollow screw with 1/2" lip
11	91032	Steel gasket for hollow screw with 1/2" lip
11	91032	Steel gasket for hollow screw with 1/2" lip
12	12733	1/2" MaleD x 3/4" MaleD high-pressure nipple
12	12733	1/2" MaleD x 3/4" MaleD high-pressure nipple
13	14403	Flexible 228 - Pump housing outlet 20+8 - C.P 80
14	14536	Flexible 241 - Pump housing outlet 8cc C.P 80
15	13074	Flexible hose 214 - mixer circuit supply - CP 60
16	12571	1/2" banjo threaded 1/2"
16	12571	1/2" banjo threaded 1/2"
17	13285	1/2 drilled head screw ø 21
17	13285	1/2 drilled head screw ø 21
18	12332	5-way distributor with LP and integrated hopper Bypass - C.P 60
19	90440	M 8 zinc plated nut
20	80269	Grower washer ø 8
21	30256	ø 8 inox narrow washer
22	30273	THEF 8 x 20 screw