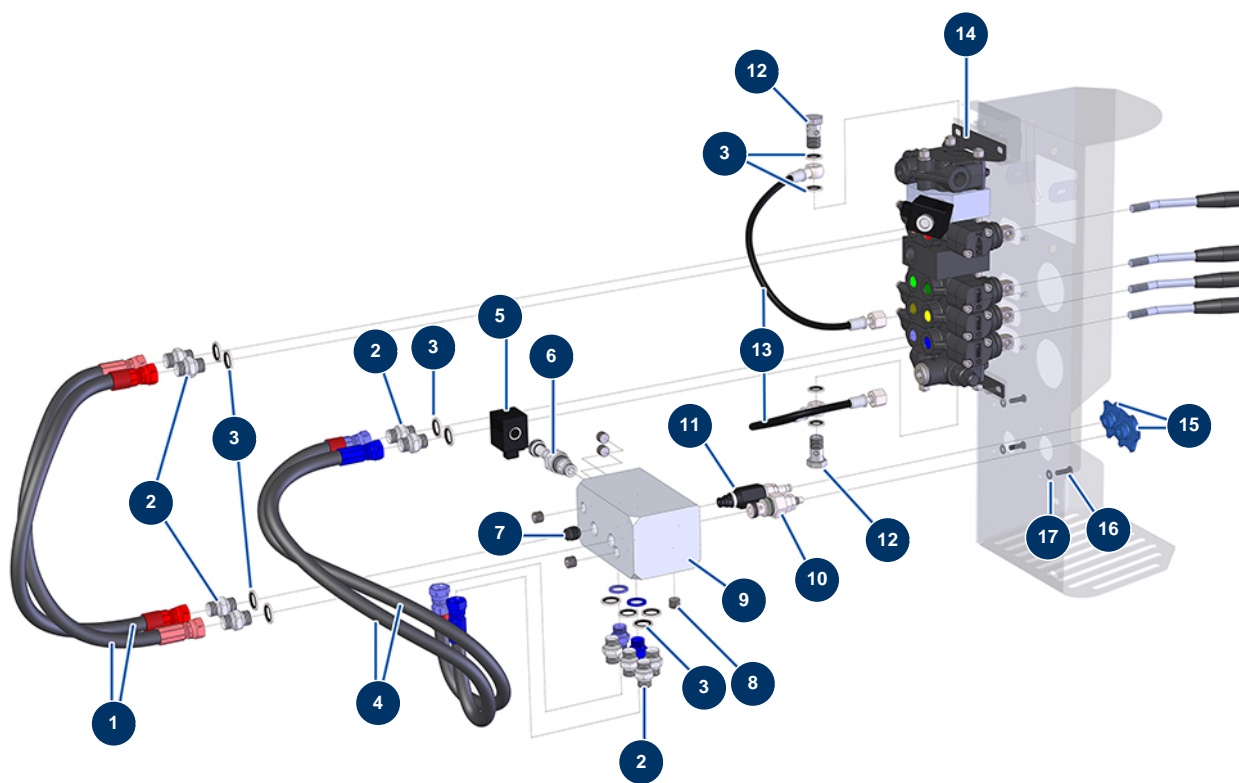


## X-PRO D80 spraying machine - Hydraulic (control)



### Détails des pièces

Pos.	Référence	Désignation
1	13060A	Flexible hose 201 - copper control - CP 60
2	90698	3/8" MaleD x 3/8" MaleD high-pressure nipple
2	90698	3/8" MaleD x 3/8" MaleD high-pressure nipple
2	90698	3/8" MaleD x 3/8" MaleD high-pressure nipple
3	91031	Steel gasket for hollow screw with 3/8 lip
3	91031	Steel gasket for hollow screw with 3/8 lip
3	91031	Steel gasket for hollow screw with 3/8 lip
3	91031	Steel gasket for hollow screw with 3/8 lip
4	13063A	Flexible hose 204 - mixer control - CP 60
5	13316	12V coil by-pass valve in cartridge - C.P 60
6	12912	12V bypass valve - CP 60
7	12577	3/8 cartridge check valve - CP 60
8	12576	1/4" MaleC Male high-pressure headless plug

Pos.	Référence	Désignation
9	M10404	Speed regulator hydraulic block - CP 60
10	13016	Mixer cartridge 45L/min single flow limiter - C.P 60
11	13143	Hopper cartridge 20L/min equalised flow limiter - C.P 60
12	91033	3/8 drilled head screw
12	91033	3/8 drilled head screw
13	13027	Manometer hose 400 mm 1/4"F (mano) x 1 banjo Ø 14 mm - C.P 60
14	12332	5-way distributor with LP and integrated hopper Bypass - C.P 60
15	M10421	Flow limiter cartridge handle - C.P 60
16	11145	6 x 16 inox cylindrical pan head screw
17	30291	ø 6 large washer