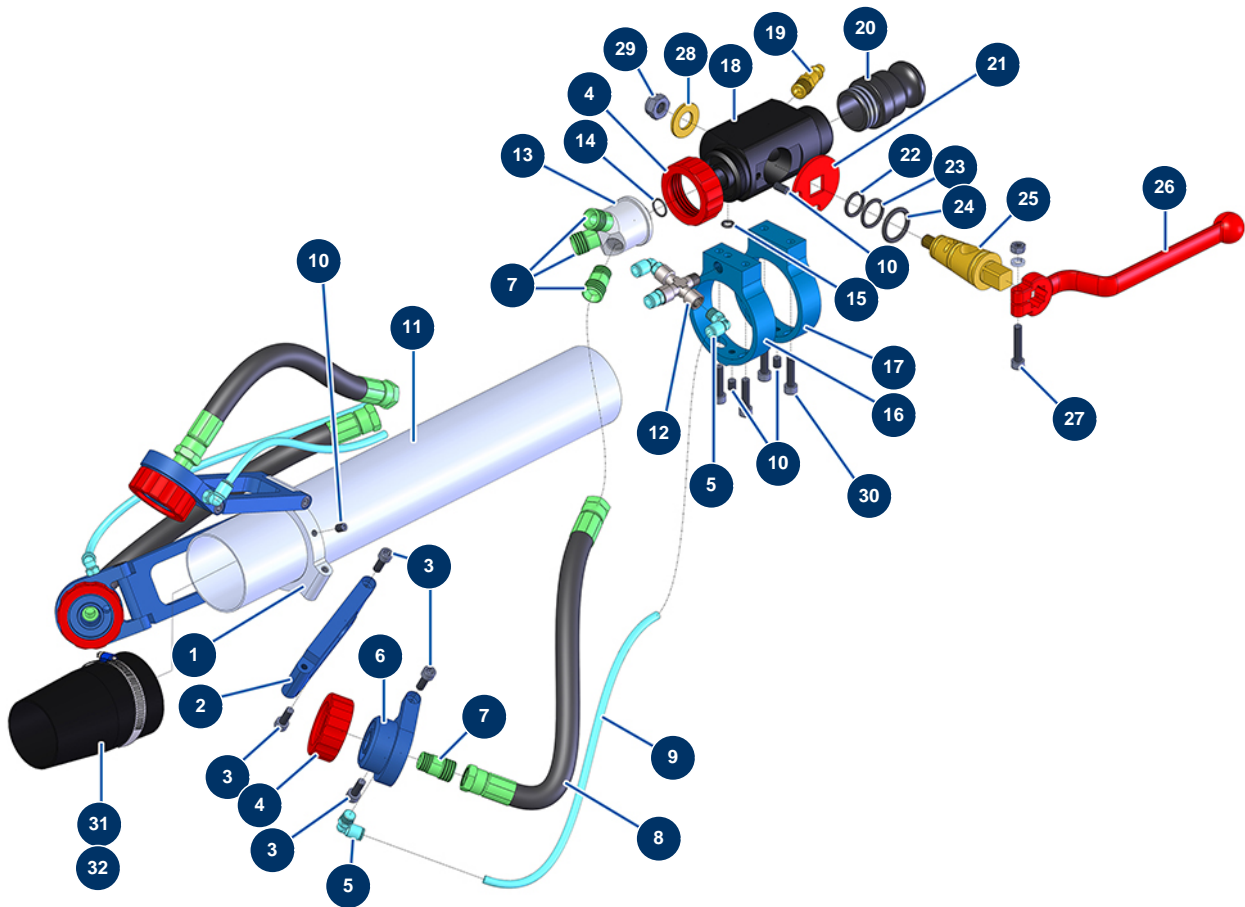


### 3 heads Ø 63 hemp and lime lance alone - General view



#### Détails des pièces

Pos.	Référence	Désignation
1	M10668	3-headed ring for Ø 63 hemp lance tube
2	M10155	Hemp lance nozzle extension
3	90157	M6 x 16 cylindrical head screw - CP 60
3	90157	M6 x 16 cylindrical head screw - CP 60
3	90157	M6 x 16 cylindrical head screw - CP 60
4	10031	Aluminium lance ring red
4	10031	Aluminium lance ring red
5	30124	Corrugated Legris coupling M1/8" Ø 6
5	30124	Corrugated Legris coupling M1/8" Ø 6
6	M10119	Hemp lance right nozzle support
7	M10120	Product inlet coupling for hemp lance
7	M10120	Product inlet coupling for hemp lance
8	12206	Hemp lance product hose Ø 10 x 25 cm

Pos.	Référence	Désignation
9	30403	Calibrated polyurethane tube ø 4 x 6 black by the metre
10	30371	ABS lance countersunk screw
10	30371	ABS lance countersunk screw
10	30371	ABS lance countersunk screw
11	M10608	Ø 63 x 460 mm tube for hemp lance
12	11154	Low pressure X M1/8 x F1/8 x F1/8 x F1/8
13	M106660	13
14	14600	12 x 1,5 O-ring
15	14616	6 x 2 O-ring
16	M10595	ABS body support for hemp lance air outlet
17	M10593	ABS body support for hemp lance
18	M10125	Hemp lance body
19	80089	Male quick fit coupling outer threaded 1/4" Ø 6
20	10280	1" x M 30/150 alu adapter for 8, 14, 24 and CP30 lance
21	10030	Stop washer
22	60026	O-ring 15,10 x 2,70
23	60027	O-ring 18,40 x 2,70
24	60028	O-ring 21,30 x 3,60
25	10029	Lance brass cone
26	20003	Red bend handle for lance (square of 14)
27	90153	6 x 30 cylindrical head screw
28	10032	Lance washer
29	13981	M 10 nylstop inox nut
30	80614	6 x 25 inox cylindrical head screw
31	M10598	Ø 63 x 50 hemp lance outlet reduction
32	11752	Worm gear clamp 50 x 70 x 9