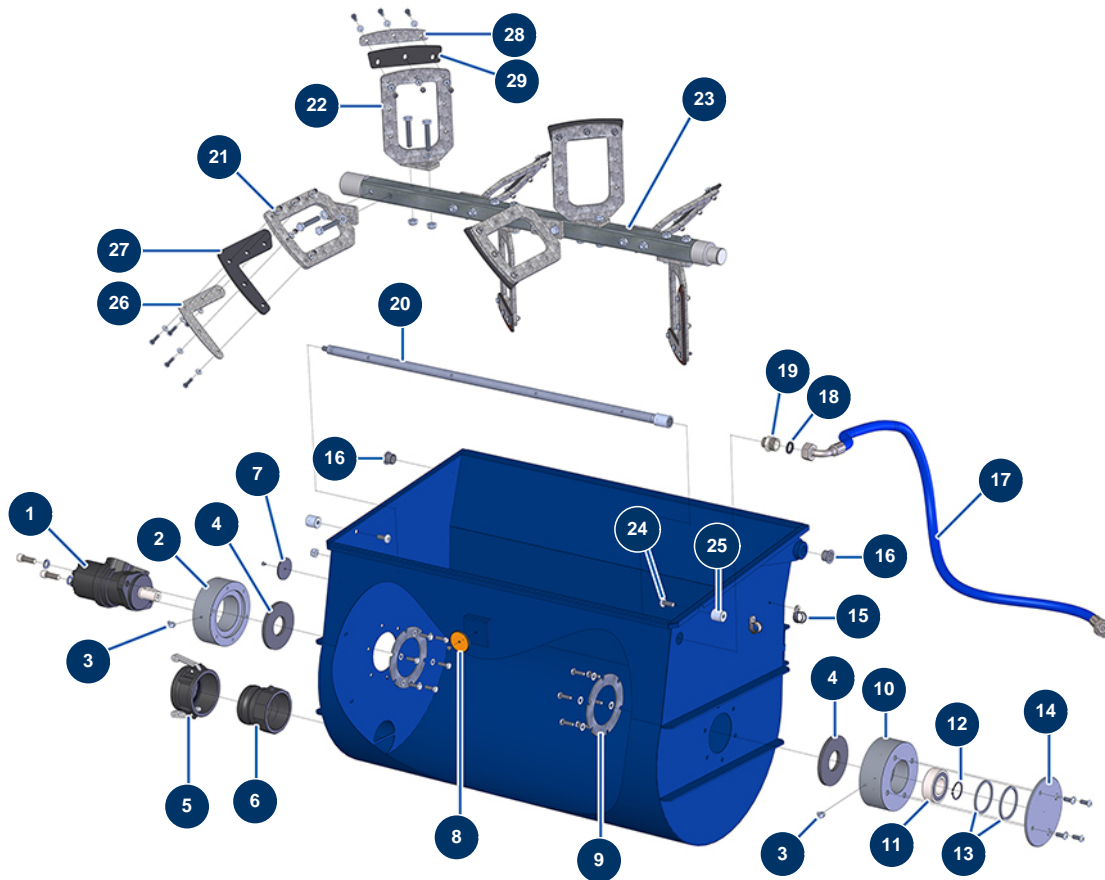


## X-PRO D80 spraying machine - Mixer



### Détails des pièces

Pos.	Référence	Désignation
1	12403	Hydraulic motor BMR 250 mixer - CP 60
2	M10244	Mixer motor bearing housing - CP60
3	12397	45° x M6 greaser - C.P 60
3	12397	45° x M6 greaser - C.P 60
4	12511	Tank base gasket - C.P 60
4	12511	Tank base gasket - C.P 60
5	13171	Polypro 3" female cam plug - C.P 60
6	13172	Polypro 3" threaded adapter - C.P 60
7	12362	Round & white reflector - C.P 60
8	12361	Round & orange reflector - C.P 60
9	C20389	Reinforcement washer - CP60
10	M10243	Mixer bearing - CP 60
11	12479	Self-aligning ball bearing Ø 35 x 72 x 23 - C.P 60

Pos.	Référence	Désignation
12	12481	Ø 35 outer circlip - CP 60
13	M10293	Mixer hopper bearing wedging ring - C.P 60
14	C20510	CP60 V17 bearing block cover
15	13179	ø 20 cable collar - CP 60
16	12418	Bearing with flange 20/23 x 16 - C.P 60
16	12418	Bearing with flange 20/23 x 16 - C.P 60
17	13625	Flexible hose 221 - mixer hopper water supply - C.P 60 from 11/2015
18	11618	3/4" red fiber flat gasket
19	11891	1/2" MaleD x 3/4" MaleD low-pressure nipple
20	C20605	Mixer water distribution ramp - C.P 60
21	C20422	Mixing right paddle - C.P 60
22	C20421	Mixing left paddle - C.P 60
23	C20568	CP 60 V17 tank bottom driveshaft
24	14169	10 x 25 inox cylindrical pan head screw
25	M20005	Slide pin for mixer tank CP 60, 70 & 80
26	C22153	CP 60 2017 blade end flap tightening plate
27	14127	CP 60 & 80 mixer end blade flap
28	C22152	CP 60 2017 blade flap tightening plate
29	14128	CP 60 & 80 mixer blade flap