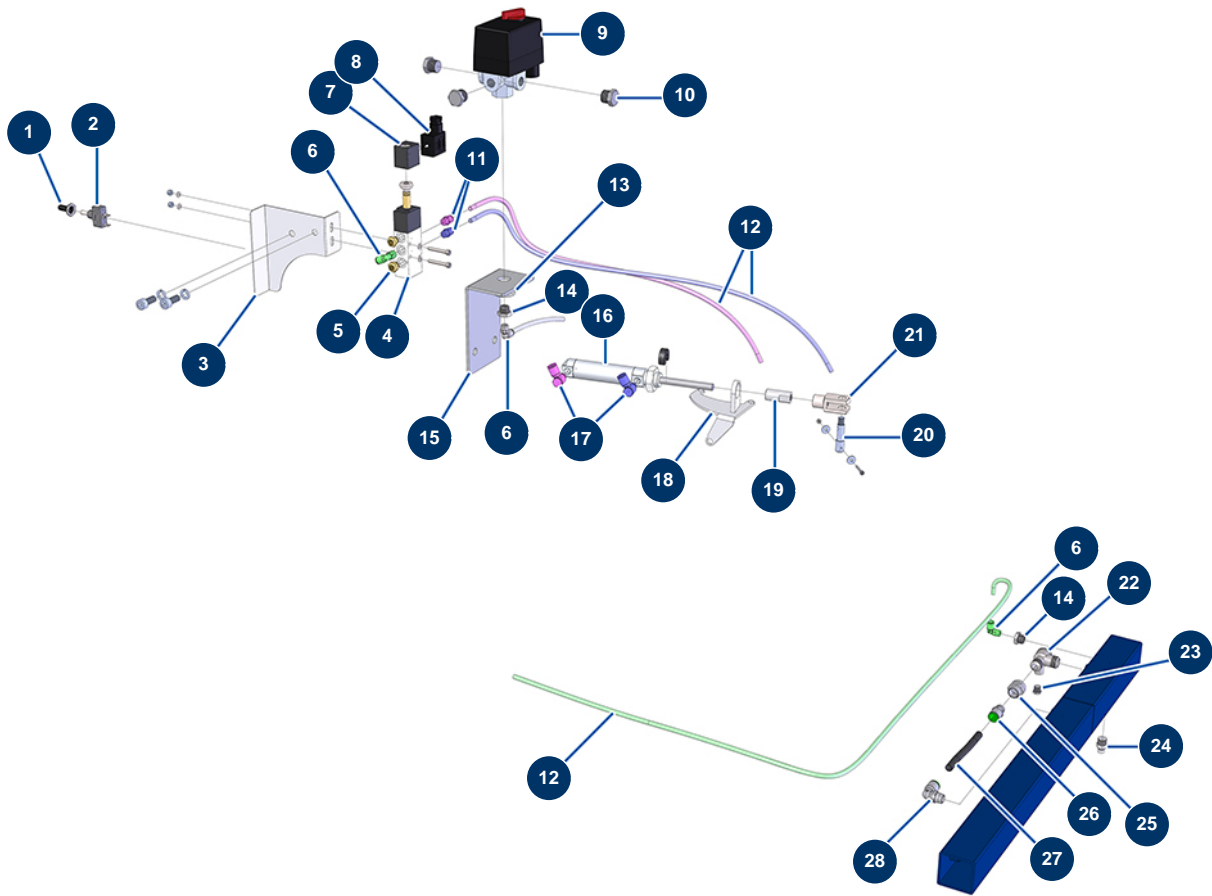


X-PRO D80 spraying machine - Automatic accelerator



Détails des pièces

Pos.	Référence	Désignation
1	90748	Compressor switch waterproof cap
2	90747	ON/OFF unipolar switch
3	C21386	CP 60 accelerator cover
4	13525	5/2 electro-pneumatic distributor - CP 60
5	12818	Air silencer 1/8" M - CP 60
6	30124	Corrugated Legris coupling M1/8" Ø 6
6	30124	Corrugated Legris coupling M1/8" Ø 6
6	30124	Corrugated Legris coupling M1/8" Ø 6
7	13527	12 VDC coil for electro-pneumatic distributor - CP 60
8	13528	12 VDC coil connector for electro-pneumatic distributor - CP 60
9	30006	Single phase compressor pressure switch
10	30118	1/4" low-pressure male plug
11	91038	Legris straight coupling M1/8 Ø 6

Pos.	Référence	Désignation
12	30403	Calibrated polyurethane tube ø 4 x 6 black by the metre
12	30403	Calibrated polyurethane tube ø 4 x 6 black by the metre
13	30288	ø 16 inox narrow washer
14	90240	1/4" MaleC x 1/8" FemaleD low-pressure reduction
14	90240	1/4" MaleC x 1/8" FemaleD low-pressure reduction
15	C21388	Pressure switch support CP 60
16	12816	Automatic accelerator cylinder - CP 60
17	13529	Banjo flow limiter ø 6 with 1/8" adjustable screw - CP 60
18	C21307	Mounting plate for pneumatic accelerator cylinder 3 cylinders diesel CP 60 V17
19	M10476	Automatic accelerator stop - CP 60
20	M10477	Automatic accelerator finger - CP 60
21	12817	Female clevis for automatic accelerator cylinder - CP 60
22	80098	Anti-return valve M3/8 x M3/8
23	90237	1/8" low-pressure male plug
24	30133	1/4" male compressor tank purge
25	10972	1/4" FemaleD x 3/8" FemaleD low-pressure nipple
26	80688	M1/4 ø 10 push-in connector
27	30405	Calibrated polyurethane tube ø 7,5 x 10 black by the metre
28	30125	Corrugated Legris coupling M1/4" Ø 10"