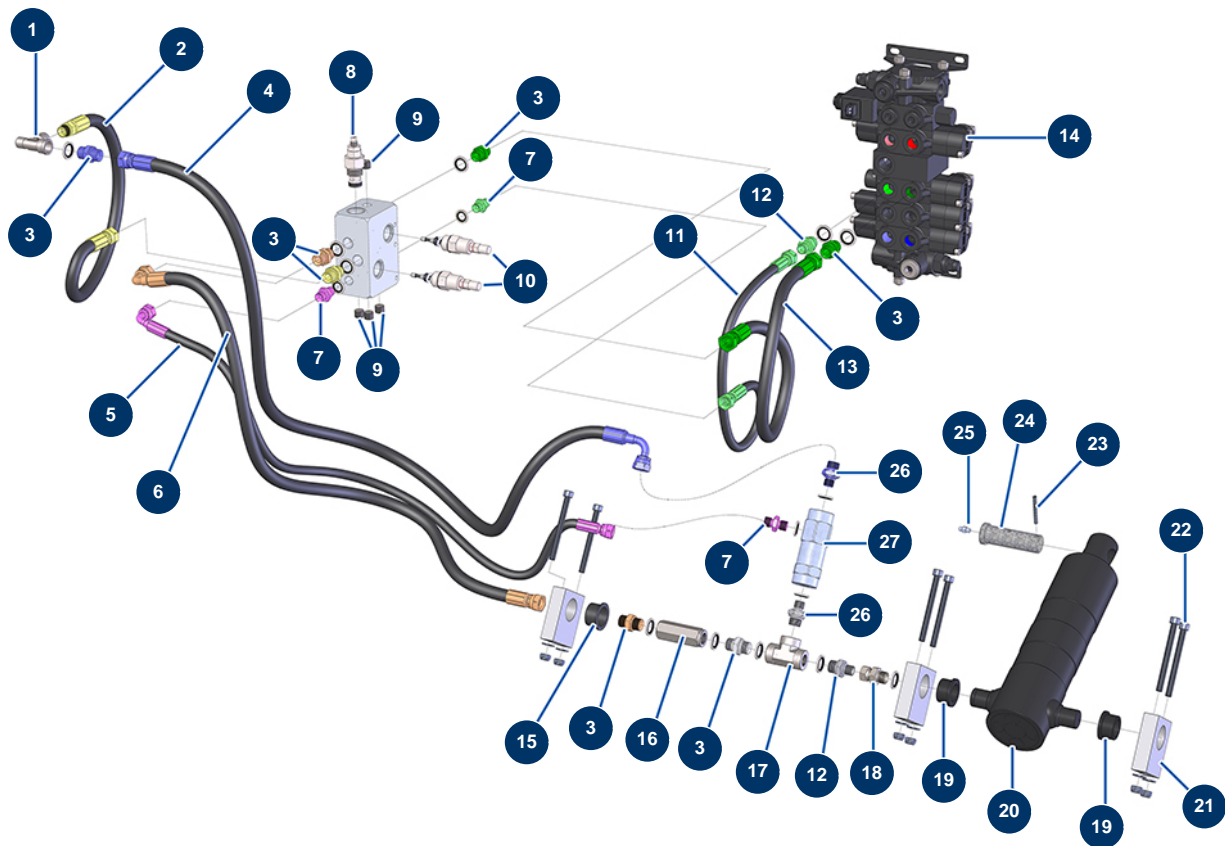


## X-PRO D60 spraying machine - Hydraulic (regulation)



### Détails des pièces

| Pos. | Référence | Désignation  |
|------|-----------|--|
| 1    | 12530     | M3/8" x F3/8" x F3/8" low pressure T                             |
| 2    | 13059     | Flexible hose 200 - cylinder block return/hydraulic tank - CP 60 |
| 3    | 90698     | 3/8" MaleD x 3/8" MaleD high-pressure nipple                     |
| 3    | 90698     | 3/8" MaleD x 3/8" MaleD high-pressure nipple                     |
| 3    | 90698     | 3/8" MaleD x 3/8" MaleD high-pressure nipple                     |
| 3    | 90698     | 3/8" MaleD x 3/8" MaleD high-pressure nipple                     |
| 3    | 90698     | 3/8" MaleD x 3/8" MaleD high-pressure nipple                     |
| 3    | 90698     | 3/8" MaleD x 3/8" MaleD high-pressure nipple                     |
| 3    | 90698     | 3/8" MaleD x 3/8" MaleD high-pressure nipple                     |
| 4    | 14288     | Flexible hose 227 - Lowering cylinder supply - P.C. 60           |
| 5    | 13065A    | Flexible hose 206 - valve control - CP 60                        |
| 6    | 12606     | Flexible hose 42 - cylinder supply - C.P 60                      |
| 7    | 90703     | 1/4" MaleD x 1/4" MaleD high-pressure nipple                     |
| 7    | 90703     | 1/4" MaleD x 1/4" MaleD high-pressure nipple                     |

| Pos. | Référence | Désignation   |
|------|-----------|---|
| 7    | 90703     | 1/4" MaleD x 1/4" MaleD high-pressure nipple                    |
| 8    | 13016     | Mixer cartridge 45L/min single flow limiter - C.P 60            |
| 9    | 12576     | 1/4" MaleC Male high-pressure headless plug                     |
| 9    | 12576     | 1/4" MaleC Male high-pressure headless plug                     |
| 10   | 13020     | Cylinder pressure limiter - CP 60                               |
| 11   | 13064     | Flexible hose 205 - cylinder control - CP 60                    |
| 12   | 90704     | 1/4" MaleD x 3/8" MaleD high-pressure nipple                    |
| 12   | 90704     | 1/4" MaleD x 3/8" MaleD high-pressure nipple                    |
| 13   | 13067A    | Flexible hose 216 - control distributor/cylinder block - C.P 60 |
| 14   | 12332     | 5-way distributor with LP and integrated hopper Bypass - C.P 60 |
| 15   | 14423     | Bearing with flange 28/32 x 20 - CP 60 & 80                     |
| 16   | 14268     | HP 2 x 3/8"F non-return valve                                   |
| 17   | 80438     | 3/8" FemaleC x 3/8" FemaleC x 3/8" FemaleC high-pressure T      |
| 18   | 14287     | 16/150 MaleD x 3/8" FemaleC - CP 60 high-pressure nipple        |
| 19   | 14129     | Bearing with flange 25/32 x 20 - CP 60 & 80                     |
| 19   | 14129     | Bearing with flange 25/32 x 20 - CP 60 & 80                     |
| 20   | 12307     | Mixer telescopic cylinder - C.P 60                              |
| 21   | M20015    | Hopper cylinder support CP 60 & 80                              |
| 22   | 14152     | 8 x 90 cylindrical head screw                                   |
| 23   | 12474     | Cylinder axis elastic pin - CP 60                               |
| 24   | M10251    | Cylinder axle - CP 60   |
| 25   | 60012     | M6 straight lubricator  |
| 26   | 1057100   | 3/8" MaleC x 1/4" MaleD high-pressure nipple                    |
| 26   | 1057100   | 3/8" MaleC x 1/4" MaleD high-pressure nipple                    |
| 27   | 14599     | Cylinder operated non-return valve - CP 60                      |