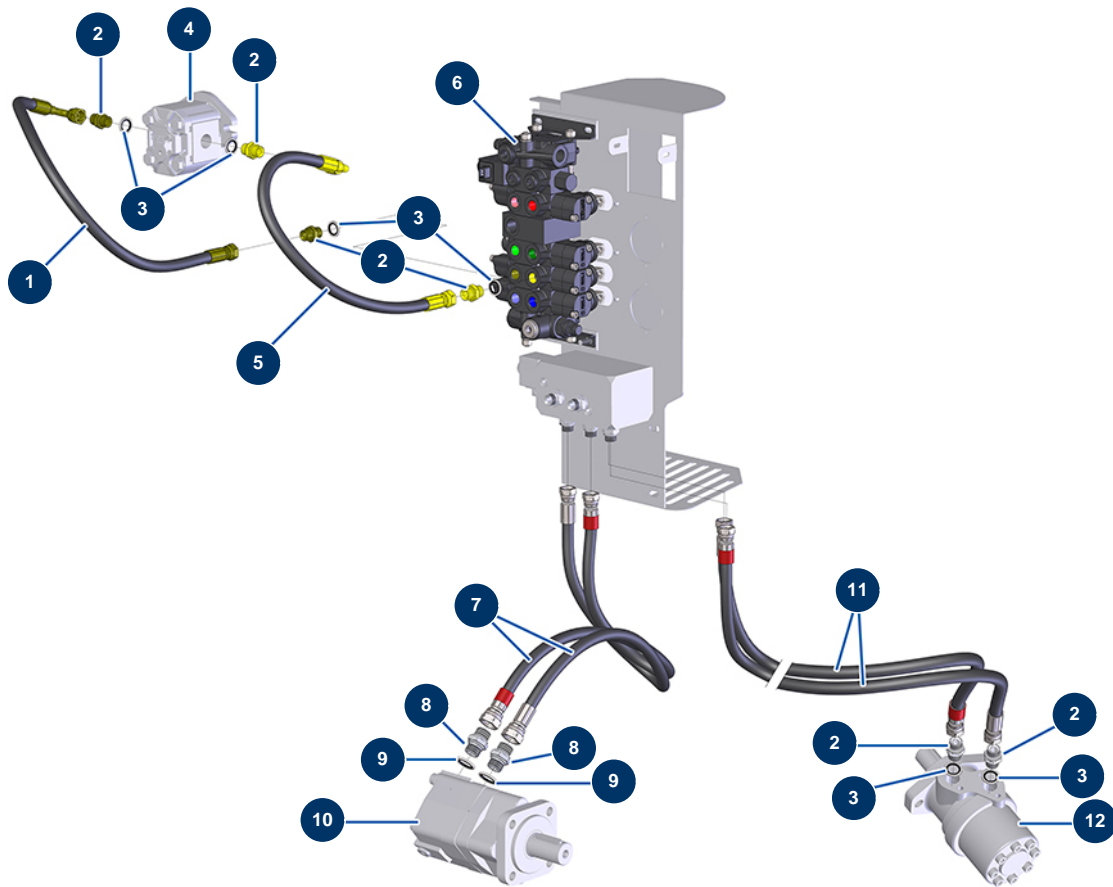


X-PRO D60 spraying machine - Hydraulic (actuators)



Détails des pièces

Pos.	Référence	Désignation
1	13062	Flexible hose 203 - cleaner - CP 60
2	90698	3/8" MaleD x 3/8" MaleD high-pressure nipple
2	90698	3/8" MaleD x 3/8" MaleD high-pressure nipple
2	90698	3/8" MaleD x 3/8" MaleD high-pressure nipple
2	90698	3/8" MaleD x 3/8" MaleD high-pressure nipple
2	90698	3/8" MaleD x 3/8" MaleD high-pressure nipple
3	91031	Steel gasket for hollow screw with 3/8 lip
3	91031	Steel gasket for hollow screw with 3/8 lip
3	91031	Steel gasket for hollow screw with 3/8 lip
3	91031	Steel gasket for hollow screw with 3/8 lip
4	12406	Washer 6 cc single-direction hydraulic motor - CP 60
5	13061	Flexible hose 202 - cleaner - CP 60
6	12332	5-way distributor with LP and integrated hopper Bypass - C.P 60

Pos.	Référence	Désignation
7	13242A	Flexible hose 217 - hopper outlet - CP 60
8	90627	1/2" MaleD x 1/2" MaleD high-pressure nipple
8	90627	1/2" MaleD x 1/2" MaleD high-pressure nipple
9	91032	Steel gasket for hollow screw with 1/2" lip
9	91032	Steel gasket for hollow screw with 1/2" lip
10	13546	Hydraulic motor BMS 160 hopper - CP 60
11	13243A	Flexible hose 218 - mixer outlet - CP 60
12	12403	Hydraulic motor BMR 250 mixer - CP 60