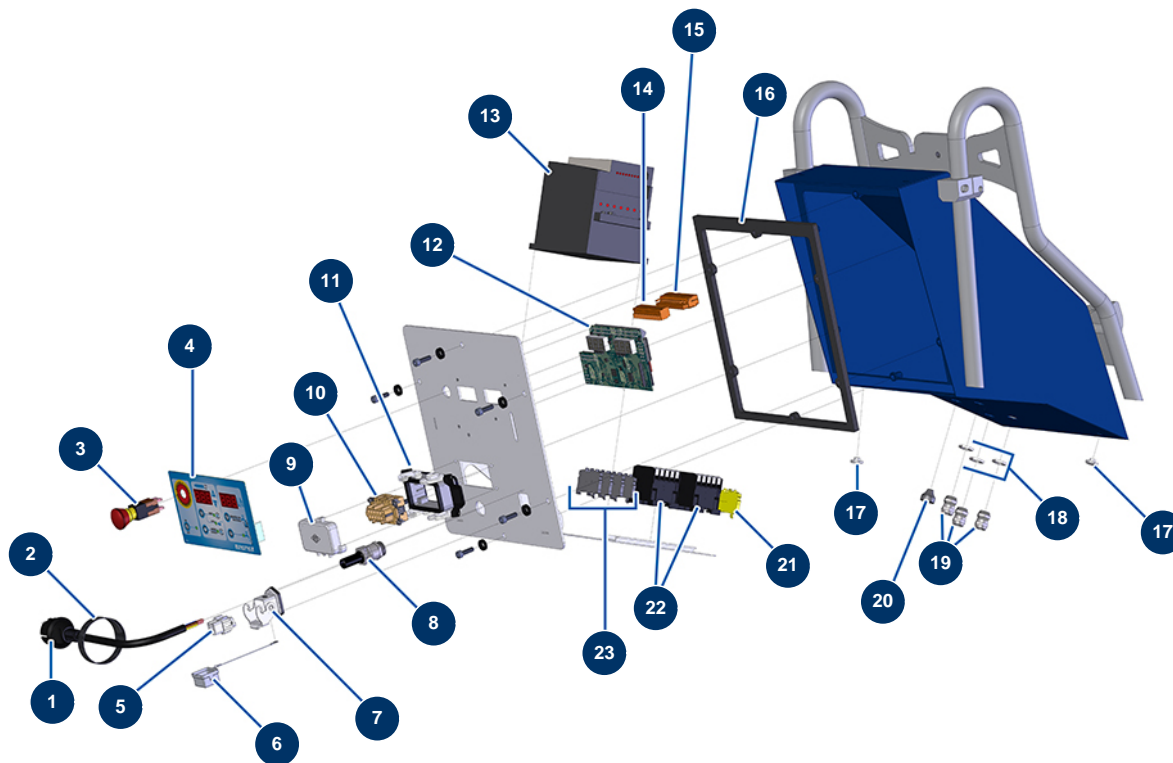


## MIXPRO 14 complete plaster continuous mixing machine - Electrical box



### Détails des pièces

Pos.	Référence	Désignation
1	90214	Power cable with molded plug 3G 2,5 mm <sup>2</sup>
2	12410	Self-gripping collar with loop 12,7 x 228 mm
3	13015	Hanging EMERGENCY STOP button Ø16
4	13008	MIXPRO 14 front with membrane
5	11914	Female insert 4p + G
6	12535	2 PIV cover with MIXPRO 14 gasket
7	11915	Blowing machine insulating support 3 p + T - 1 lever
8	80450	2 cable gland for 11mm supply cable
9	12096	4 PIV cover
10	12092	Female insert 10 p + T
11	12094	Base 10 p + T - 2 levers
12	30671	MIXPRO 14 electronic card
13	80458	Inverter 230 V - 1,5 kW

Pos.	Référence	Désignation
14	11772	12 pins female connector
15	11771	12 pins male connector
16	12100	EUOPRO MIXPRO 14 electrical box gasket
17	80397	Water exhaust cork for electrical box
17	80397	Water exhaust cork for electrical box
18	11327	Cable gland locknut of M16
19	80445	Watertight cable gland of M16
20	11564	M 16 grey rubber cable gland
21	30038	Yellow and green conductive block 6 mm <sup>2</sup>
22	30011	230 Volt coil switch for sprayer
23	80467	Grey conductor block 4 mm <sup>2</sup>