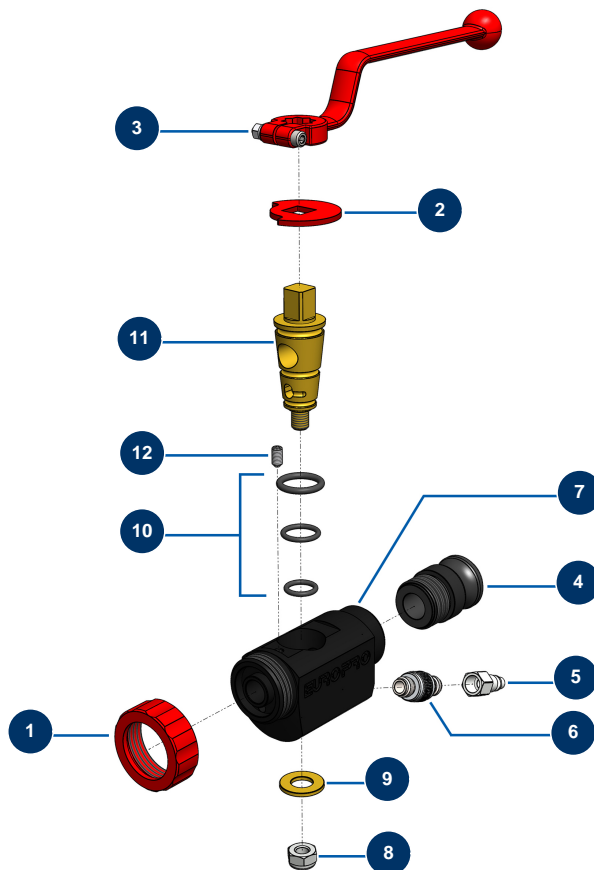


VOLUMAIR machine ABS slurry spraying lance, before 2003 - General view



Détails des pièces

| Pos. | Référence | Désignation |
|------|-----------|--|
| 1 | 10031 | Aluminium lance ring red |
| 2 | 10030 | Stop washer |
| 3 | 20003 | Red bend handle for lance (square of 14) |
| 4 | 10280 | 1" x M 30/150 alu adapter for 8, 14, 24 and CP30 lance |
| 5 | 80091 | Male quick fit coupling inner threaded 1/4" Ø 6 |
| 6 | 20006 | Air adjustment tap 1/4" M x 1/4" M |
| 7 | 10028 | ABS lance body block |
| 8 | 60013 | M 10 nylstop nut |
| 9 | 10032 | Lance washer |
| 10 | 80154 | EUROPRO spraying machine lance gasket kit |
| 11 | 10029 | Lance brass cone |
| 12 | 30371 | ABS lance countersunk screw |