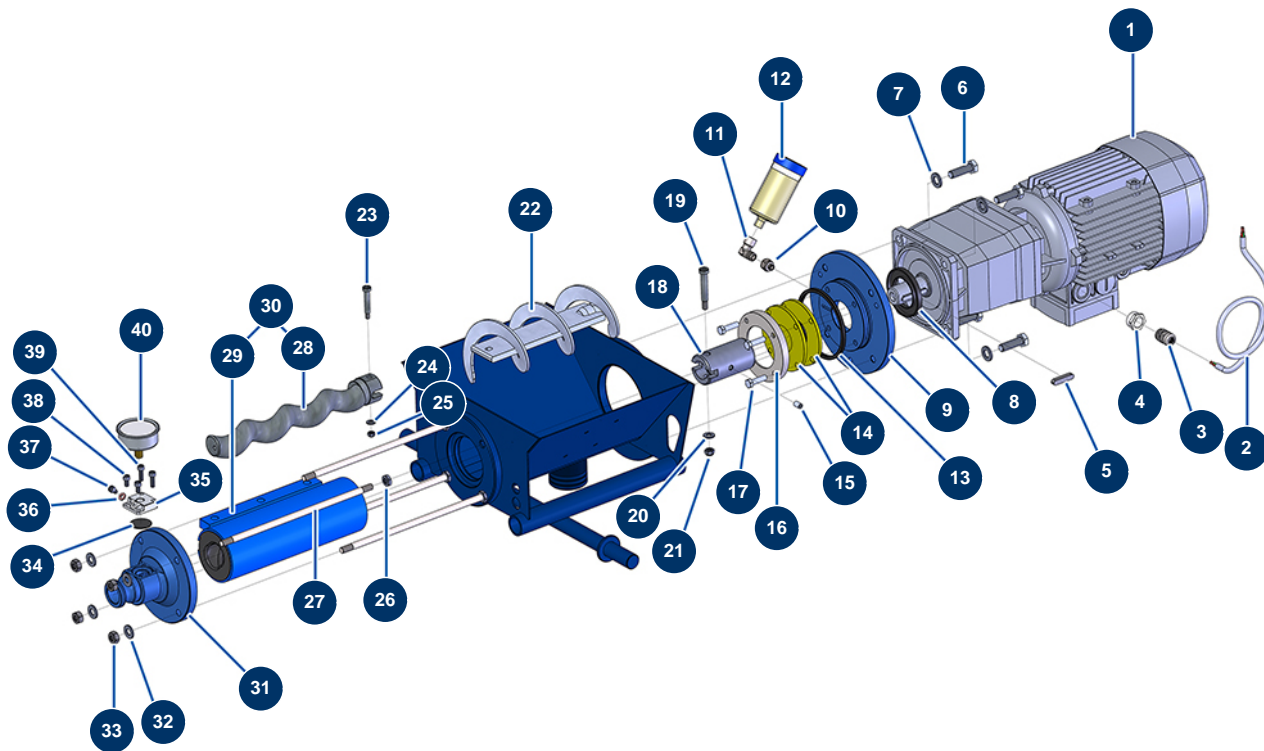


## COMPACT-PRO 30 spraying machine - Transmission



### Détails des pièces

Pos.	Référence	Désignation
1	10895	Geared motor 2,2 kW - T322 - R14 - 1400 rpm - 400V
2	90606	Shielded cable 4 x 1,5 by the metre
3	30040	Nickel plated watertight cable gland of 11 CEM
4	80446	Cable gland reduction M 25-11
5	11999	8 x 7 x 40 parallel key with round end
6	12928	THEF 12 x 40 screw
7	30281	ø 12 inox narrow washer
8	70107	Spi seal 50 x 80 x 8 for 24P,24PT, MPE300, COMPACT-PRO 30
9	11334	Motor spacer flange for COMPACT-PRO
10	10899	1/8" MaleD x 1/4" FemaleD low-pressure nipple
11	30121	90° low-pressure elbow 1/4 MaleC x 1/4 FemaleD
12	90639	Automatic greaser
13	11337	COMPACT-PRO 30 4-lobes seal for motor spacer flange

Pos.	Référence	Désignation
14	11300	COMPACT-PRO 30 tank base gasket
15	11360	Socket head screw M 8 x 16
16	M10190	COMPACT-PRO 30 gasket support ring
17	11544	THEF 8 x 25 screw
18	11336	Drive shaft for CP 20, 30 & 40
19	11359	CP 30 transmission shaft screw pin
20	80260	ø 8 inox medium washer
21	13980	M 8 nylstop inox nut
22	11357	CP 30 to 50 connecting rod
23	90520	CP 30 rotor screw pin
24	80259	Ø 6 medium washer
25	14217	M 6 nylstop inox nut
26	13979	M10 flat inox nut
27	60010	Fastening tie rod for MAP 5/6
28	MI7009107300	EUROPRO MAP 5/6 pump rotor CP30-type head
29	MI3F00529400	EUROPRO MAP 6 D8-1,5 adjustable pump stator
30	30446	EUROPRO MAP 6 pump rotor/stator kit
31	90125	EUROPRO 24 P and COMPACT-PRO 30 stator flange
32	80261	ø 10 inox medium washer
33	13978	M10 inox nut
34	12913	Pump nose manometer membrane for JETPRO 80, 120, JETBAG 120
35	M10079	MIXPRO 14 cage cover
36	12765	Copper seal for JETPRO 80 pump nose
37	90157	M6 x 16 cylindrical head screw - CP 60
38	12112	6 x 12 cylindrical head screw
39	90996	6 x 20 inox cylindrical head screw
40	80070	Axial manometer 1/4" conical oil 50 mm 0 to 60 bar