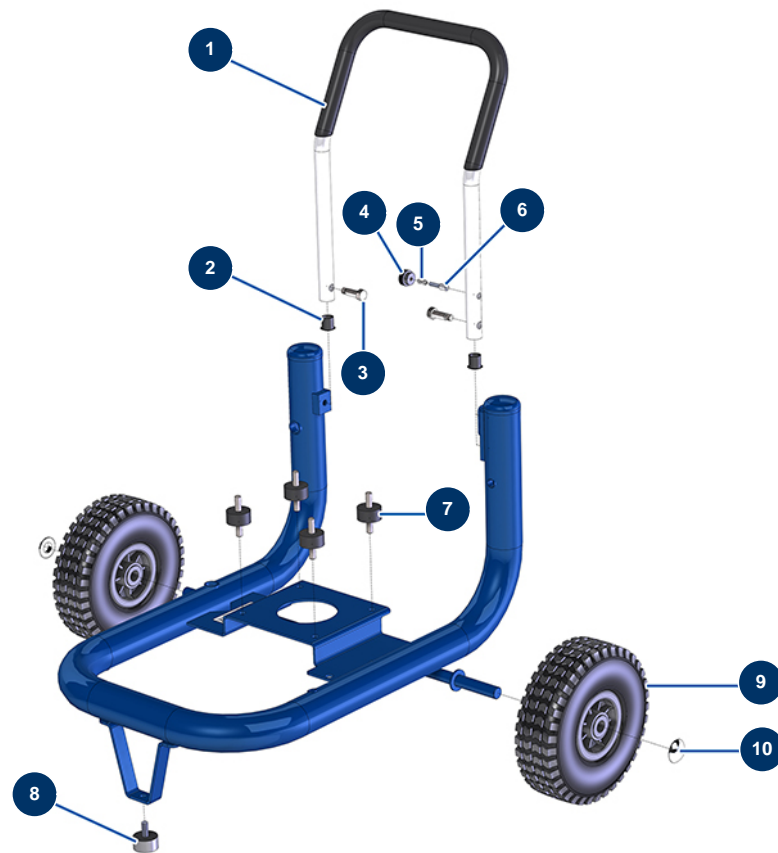


EUROPRO 40 compressor - Chassis



Détails des pièces

| Pos. | Référence | Désignation |
|------|-----------|--|
| 1 | 90804 | EUROPRO 36 and 40 compressor arm |
| 2 | 90870 | Black plastic end cap for ø 25 round tube |
| 3 | 30360 | EUROPRO 30+,36 and 40 compressor arm screw |
| 4 | 20001 | EUROPRO 30+,36 and 40 compressor arm button |
| 5 | 60040 | Compressor trigger spring |
| 6 | 90179 | EUROPRO 30+,36 and 40 compressor arm latch |
| 7 | 30150 | Silentbloc ø 40 x 20 M10 |
| 8 | 30145 | Ø 40 x 20 M10 stop |
| 9 | 80001 | Complete wheel 260 shaft of 20 for 6,8,14P, MPE 80 and 200, 7000z, 9000z |
| 10 | 90281 | Ø20 chromed clip |