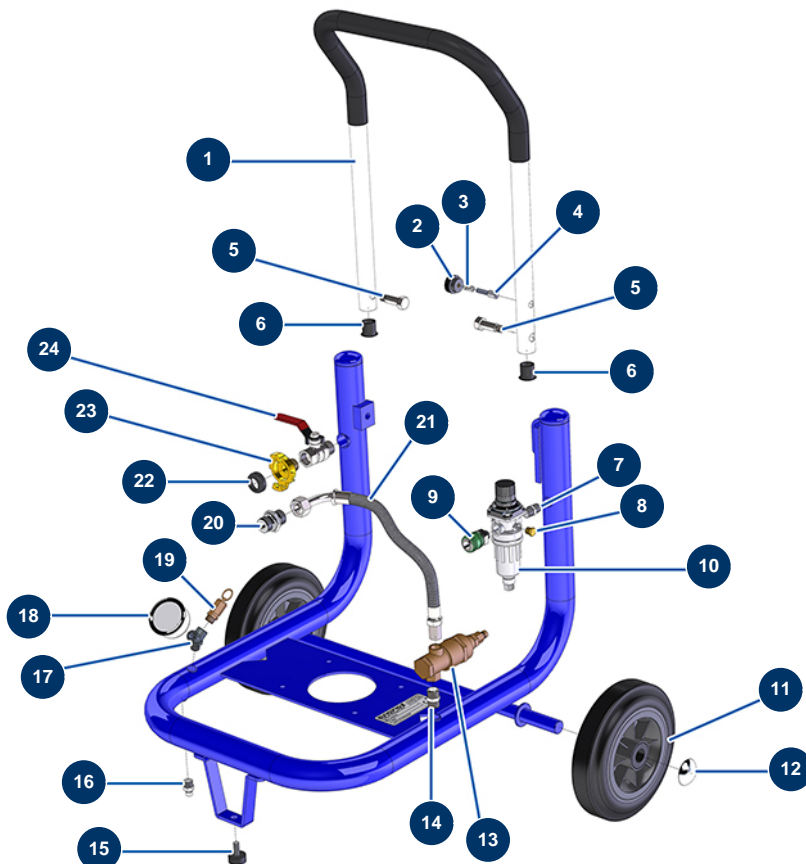


## EUROPRO 30+ compressor - Chassis / Pneumatic circuit



### Détails des pièces

Pos.	Référence	Désignation
1	90803	EUROPRO 30 + compressor arm
2	20001	EUROPRO 30+,36 and 40 compressor arm button
3	60040	Compressor trigger spring
4	90179	EUROPRO 30+,36 and 40 compressor arm latch
5	30360	EUROPRO 30+,36 and 40 compressor arm screw
5	30360	EUROPRO 30+,36 and 40 compressor arm screw
6	90870	Black plastic end cap for ø 25 round tube
6	90870	Black plastic end cap for ø 25 round tube
7	70027	1/4" MaleC x 1/4" MaleC low-pressure nipple
8	90237	1/8" low-pressure male plug
9	80080	Female quick fit coupling outer threaded 1/4" Ø 6
10	90014	Superimposed 1/4" regulator filter
11	90720	Complete wheel 200 shaft 20 for 4P and MPE 50

Pos.	Référence	Désignation
12	90281	Ø20 chromed clip
13	101015	3/8" emptying autonomous valve
14	30367	3/8" MaleC x 3/8" MaleC low-pressure nipple
15	30142	Ø 30 x 15 M8 stop
16	30133	1/4" male compressor tank purge
17	30123	Low pressure Y - M1/4" x F1/4" x F1/4"
18	80028	1/4 conical axial manometer - 50mm - 0 to 20 bar
19	80097	1/4" certified outer threaded safety valve 11 bar
20	90627	1/2" MaleD x 1/2" MaleD high-pressure nipple
21	90723	E 30 + compressor outlet air hose
22	70030	Standard quick fit coupling gasket
23	70099	1/2" outer threaded quick fit coupling
24	90023	Red handle valve M1/2" x F1/2"