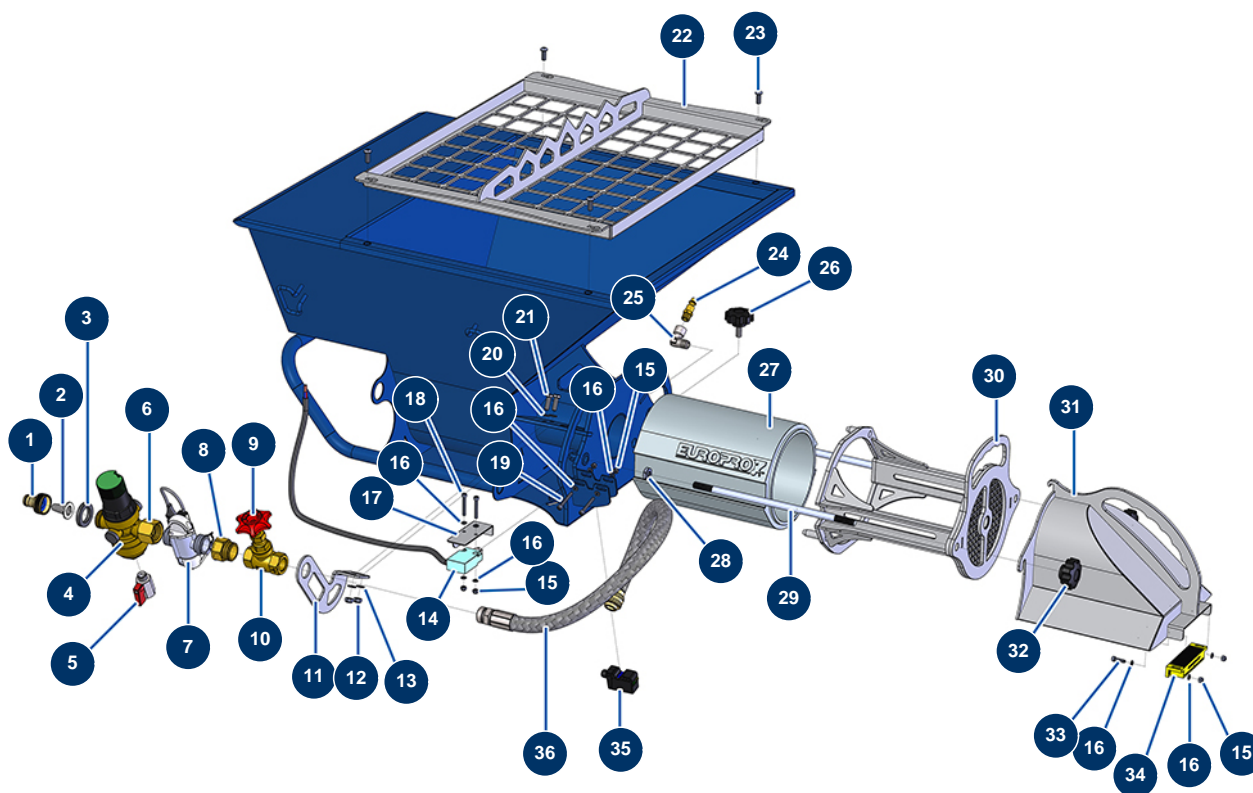


JETMIX 100 + MIXPRO 70 atomizing set - MIXPRO 70 chassis



Détails des pièces

Pos.	Référence	Désignation
1	80124	Inner threaded 3/4" quick connector
2	80128	Filter for 3/4" brass quick connector
3	70013	3/4" cam coupler gasket
4	13502	1,5 to 6 bar water pressure regulator with purge
5	30135	1/4" mini lux valve
6	11311	3/4" FemaleD x 3/4" FemaleD low-pressure nipple
7	14082	Flowmeter electrovalve with 5-pin connector
8	12562	3/4" MaleD x 3/4" FemaleD low-pressure nipple
9	M10231	Wheel for needle valve MIXPRO 14
10	12470	Needle valve 1/2"F x 1/2"F MIXPRO 14
11	C21196	11
12	14217	M 6 nylstop inox nut
13	70085	ø 5 narrow washer

Pos.	Référence	Désignation
14	13431	Limit safety sensor for MIXPRO 70
15	30266	M 4 nylstop nut
15	30266	M 4 nylstop nut
15	30266	M 4 nylstop nut
16	30267	∅ 4 inox narrow washer
16	30267	∅ 4 inox narrow washer
16	30267	∅ 4 inox narrow washer
16	30267	∅ 4 inox narrow washer
16	30267	∅ 4 inox narrow washer
16	30267	∅ 4 inox narrow washer
17	C21227	
18	11882	4 x 30 cylindrical head screw
19	12455	19
20	70087	∅ 6 inox narrow washer
21	14539	THEF 6 x 20 screw
22	C21226	Safety grid for MIXPRO 70
23	11145	6 x 16 inox cylindrical pan head screw
24	70043	1/4" outer threaded male quick-connector
25	30121	90° low-pressure elbow 1/4 MaleC x 1/4 FemaleD
26	13455	∅35 outer threaded plastic steering wheel M6 x 20
27	13559	P.U. mixing chamber for MIXPRO 70
28	13979	M10 flat inox nut
29	M10454	Fastening tie rod for MIXPRO 70
30	C21465	Support for MIXPRO 70 P.U. mixing chamber
31	C21454	Gutter for MIXPRO 70 P.U. chamber
32	13432	M10 plastic thumb wheel
33	90137	4 x 16 cylindrical head screw
34	13468	Safety grid captor coded magnet for JETMIX, MIXPRO 14, 70 & 100
35	13386	Tank level detector for MIXPRO 70
36	13478	MIXPRO 70 mixing chamber flow meter supply hose