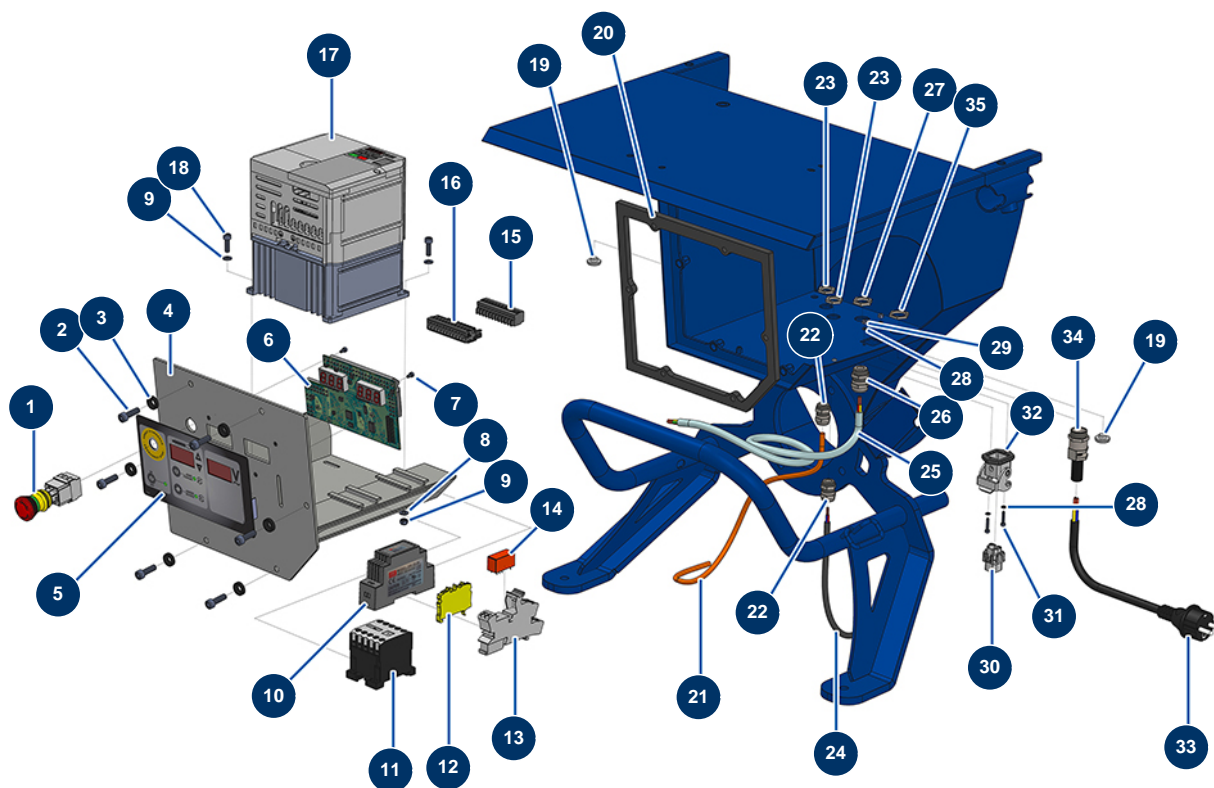


## JETMIX 100 + MIXPRO 70 atomizing set - JETMIX 100 electrical box



### Détails des pièces

Pos.	Référence	Désignation
1	13015	Hanging EMERGENCY STOP button Ø16
2	909996	2
3	80573	Hollow washer Ø 6
4	C21253	4
5	14734	Membrane front panel for JETPRO Evo2
6	30628	Electronic board for JETMIX 100
7	13329	3 x 6 cylindrical head screw
8	70085	ø 5 narrow washer
9	11880	M 5 nylstop nut
9	11880	M 5 nylstop nut
10	12711	Supply 230V-24VDC-15W
11	11918	Coil contactor 24 Volt AC
12	30038	Yellow and green conductive block 6 mm²

Pos.	Référence	Désignation
13	12751	Plug-in miniature relay base
14	12752	Plug-in miniature relay 24V AC - 1RT
15	11772	12 pins female connector
16	11771	12 pins male connector
17	13089	Inverter 230 V - 2.2 KW GA
18	90160	5 x 16 cylindrical head screw
19	80397	Water exhaust cork for electrical box
19	80397	Water exhaust cork for electrical box
20	13412	JETMIX machine box gasket
21	12409	M12 straight female connector with 2m cable
22	80445	Watertight cable gland of M16
22	80445	Watertight cable gland of M16
23	11327	Cable gland locknut of M16
23	11327	Cable gland locknut of M16
24	30018	H07RNF 4G1.5 electrical cable by the metre
25	90606	Shielded cable 4 x 1,5 by the metre
26	30040	Nickel plated watertight cable gland of 11 CEM
27	30333	Cable gland locknut of 11 CEM
28	12108	ø 3 inox narrow washer
28	12108	ø 3 inox narrow washer
29	12737	M 3 nylstop nut
30	11914	Female insert 4p + G
31	12250	3 x 16 cylindrical head screw
32	11915	Blowing machine insulating support 3 p + T - 1 lever
33	90214	Power cable with molded plug 3G 2,5 mm <sup>2</sup>
34	80451	Brass cable gland of 13 for power cable
35	30054	Cable gland locknut of 13