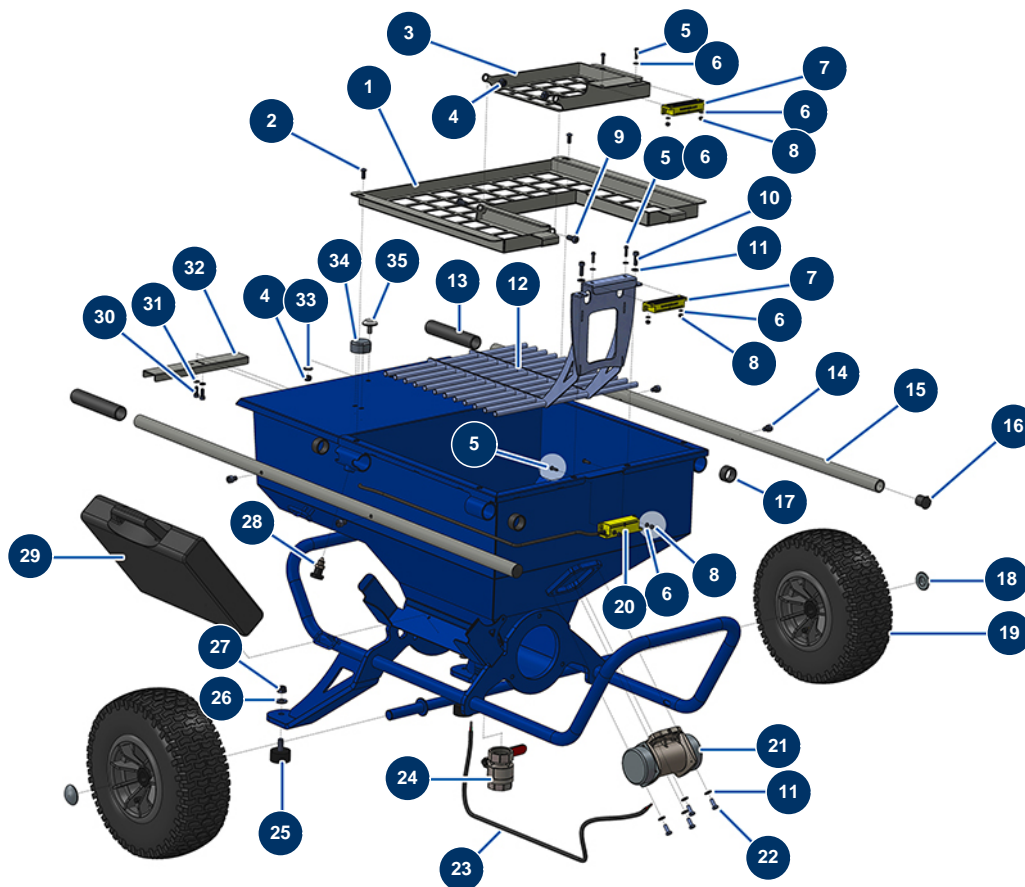


## JETMIX 100 + MIXPRO 70 atomizing set - JETMIX 100 chassis



### Détails des pièces

Pos.	Référence	Désignation
1	C21371	JETMIX 80 upper safety grid
2	11145	6 x 16 inox cylindrical pan head screw
3	C21373	JETMIX 80 trapdoor upper safety grid
4	13980	M 8 nylstop inox nut
4	13980	M 8 nylstop inox nut
5	90137	4 x 16 cylindrical head screw
5	90137	4 x 16 cylindrical head screw
5	90137	4 x 16 cylindrical head screw
6	11736	ø 4 inox medium washer
6	11736	ø 4 inox medium washer
6	11736	ø 4 inox medium washer
6	11736	ø 4 inox medium washer
6	11736	ø 4 inox medium washer

Pos.	Référence	Désignation
7	13468	Safety grid captor coded magnet for JETMIX, MIXPRO 14, 70 & 100
7	13468	Safety grid captor coded magnet for JETMIX, MIXPRO 14, 70 & 100
8	30266	M 4 nylstop nut
8	30266	M 4 nylstop nut
8	30266	M 4 nylstop nut
9	12111	8 x 20 inox cylindrical pan head screw
10	90996	6 x 20 inox cylindrical head screw
11	80259	Ø 6 medium washer
11	80259	Ø 6 medium washer
12	C21376	12
13	90255	Arm handle for EUROPRO 24P, E50 and E100
14	90151	8 x 10 cylindrical head screw
15	C21326	JETMIX 80 / Blowing machine arm
16	90870	Black plastic end cap for ø 25 round tube
17	13453	Cylindrical bearing 26/30 x 16
18	90281	Ø20 chromed clip
19	12319	Complete wheel 320 with axle of 20
20	12120	Grid safety sensor for JETMIX, MIXPRO 14, 70 & 100
21	11997	Single vibrator - 230V
22	12069	THEF 6 x 16 screw
23	30018	H07RNF 4G1.5 electrical cable by the metre
24	30152	Drain valve for EUROPRO 24P and MPE 300
25	30145	Ø 40 x 20 M10 stop
26	80261	ø 10 inox medium washer
27	13981	M 10 nylstop inox nut
28	13454	M12 X 1.5 indexage pin
29	90603	Empty case for lance
30	12112	6 x 12 cylindrical head screw
31	70087	ø 6 inox narrow washer
32	C22727	32
33	80260	ø 8 inox medium washer
34	M10487	JETMIX lateral stop
35	M10456	MIXPRO 70 rotation knob