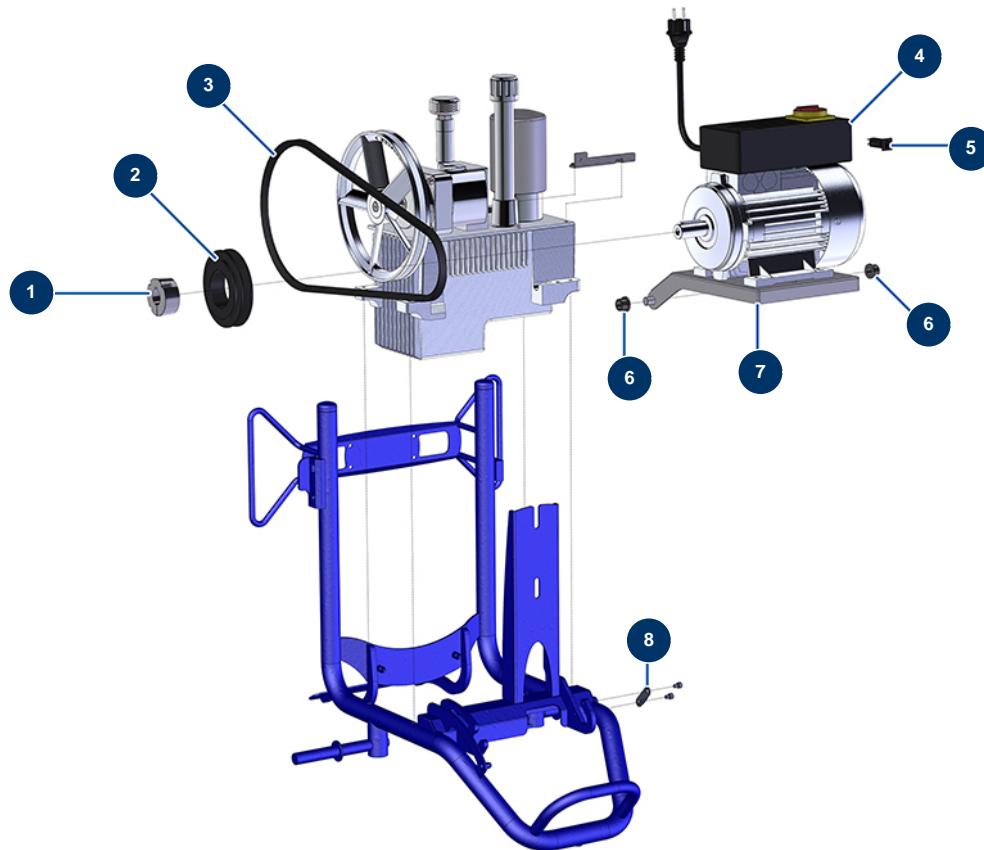


HYDROPRO 600 E airless piston pump - 2,2 kW electrical motor



Détails des pièces

Pos.	Référence	Désignation
1	90195	Removable hub Ø 24 for 1610
2	30373	13 pulley without hub ø 118
3	13699	V-belt 13 XPA 1300 HYDROPRO 600
4	30159	Foot mounted electric motor 2,2 kW - T90 - B3 - 1400 rpm - 230V
5	30090	16 A squared petrol motor circuit breaker
6	14227	Bearing with flange 14/20 x 15
6	14227	Bearing with flange 14/20 x 15
7	C21684	HYDROPRO 600 electric motor plate
8	C21628	E336 compressor version 2 non-return plate