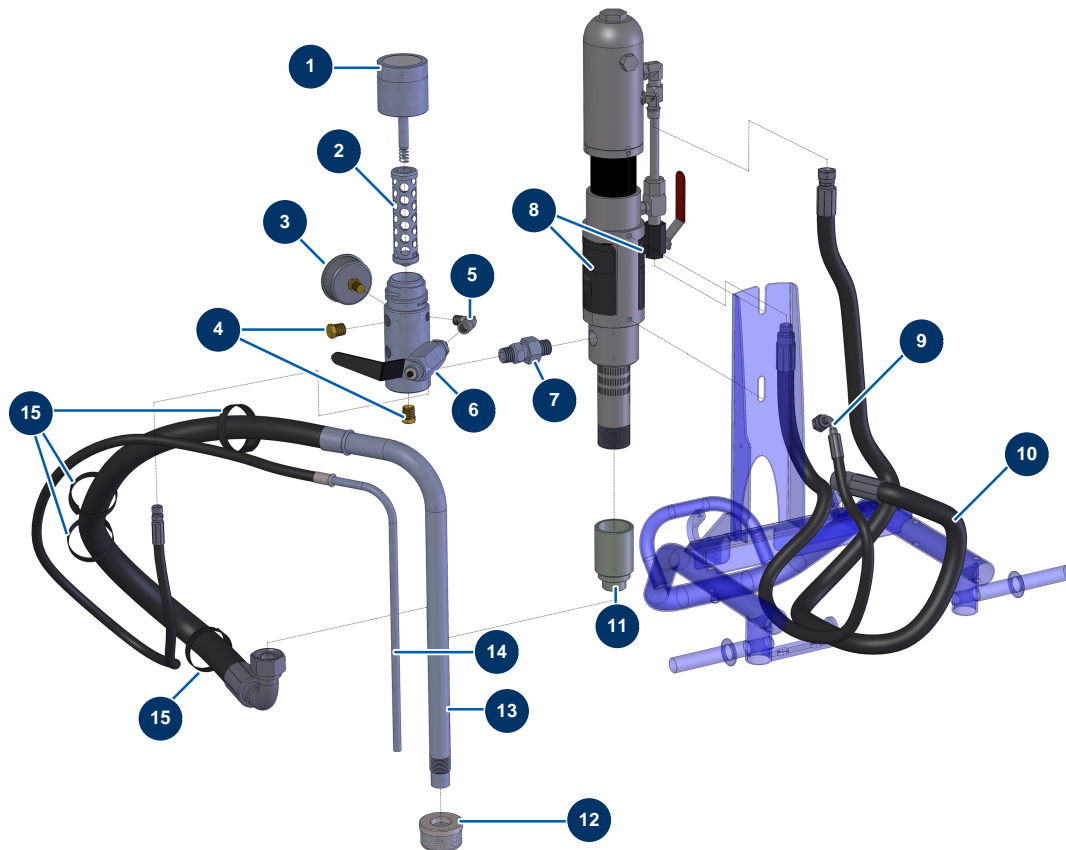


## HYDROPRO 600 E airless piston pump - Pump



### Détails des pièces

Pos.	Référence	Désignation
1	W930-937A	Body cover
2	15230	5-mesh HYDROLINE pump filter
3	80070	Axial manometer 1/4" conical oil 50 mm 0 to 60 bar
4	80607	3/8" high-pressure MaleC plug
5	30121	90° low-pressure elbow 1/4 MaleC x 1/4 FemaleD
6	W944-030A	HC discharge valve
7	Nous consulter	7
8	W349473	8
9	13772	HYDROPRO 600 supply flexible hose
10	13773	HYDROPRO 600 return hose
11	40054	HDROPRO 600 pump lower
12	40051	Suction strainer 3/4"F 10 meshes
13	13794	HYDROPRO 600 suction rod

Pos.	Référence	Désignation
14	13795	HYDROPRO 600 return rod
15	12411	Self-gripping collar 20 x 330 mm
15	12411	Self-gripping collar 20 x 330 mm