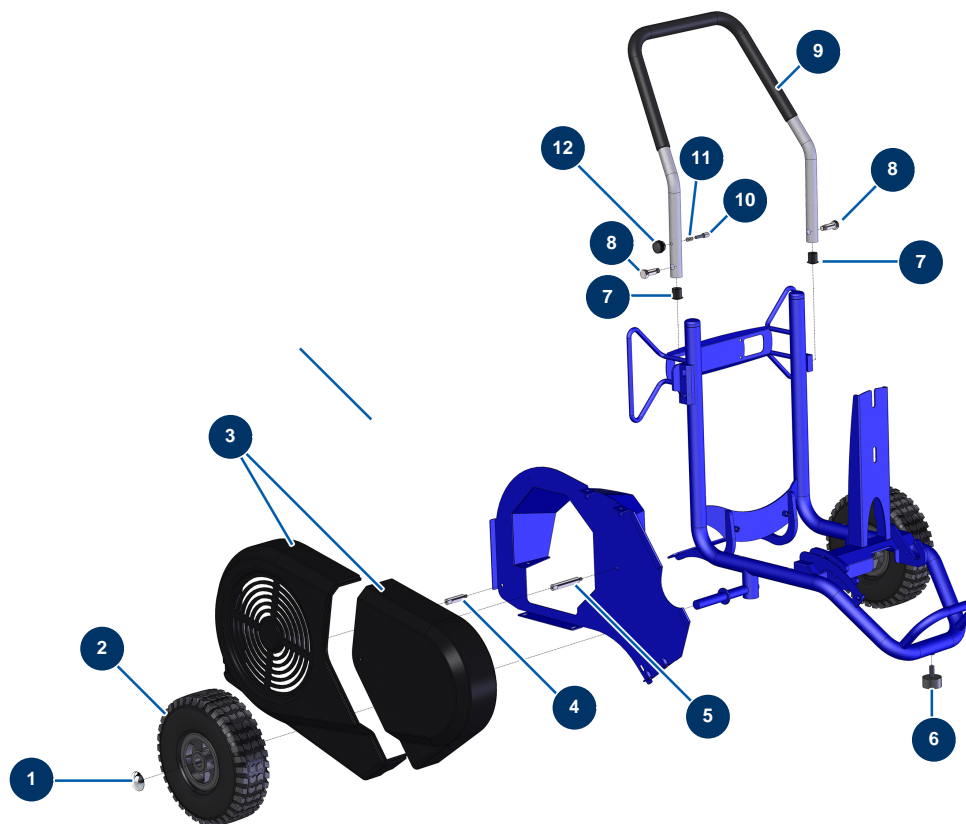


HYDROPRO 600 E airless piston pump - General view



Détails des pièces

Pos.	Référence	Désignation
1	90281	Ø20 chromed clip
2	80001	Complete wheel 260 shaft of 20 for 6,8,14P, MPE 80 and 200, 7000z, 9000z
3	13654	HYDROPRO 600 complet plastic crankcase
4	M10524	Short fastening spacer for HYDROPRO 600 plastic crankcase
5	M10525	High fastening spacer for HYDROPRO 600 plastic crankcase
6	30145	Ø 40 x 20 M10 stop
7	90870	Black plastic end cap for ø 25 round tube
7	90870	Black plastic end cap for ø 25 round tube
8	30360	EUROPRO 30+,36 and 40 compressor arm screw
8	30360	EUROPRO 30+,36 and 40 compressor arm screw
9	C21635	E336 compressor version 2 arm
10	90179	EUROPRO 30+,36 and 40 compressor arm latch
11	60040	Compressor trigger spring

Pos.	Référence	Désignation
12	20001	EUROPRO 30+,36 and 40 compressor arm button