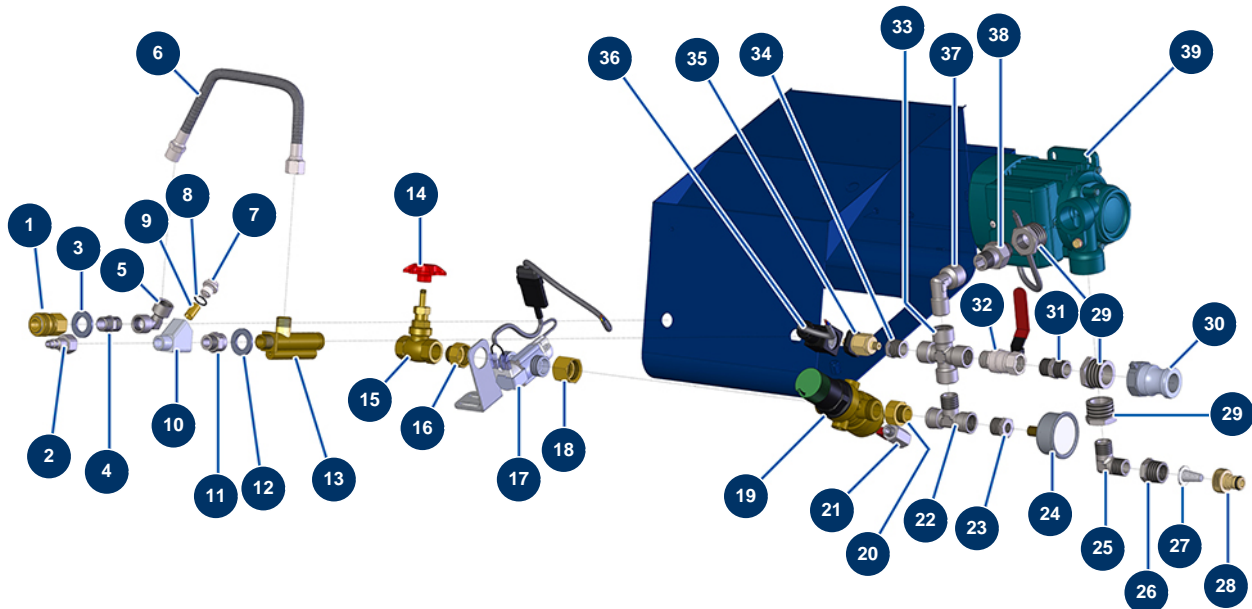


MIXPRO 14 complete floor-screed continuous mixing machine - Hydraulic system



Détails des pièces

| Pos. | Référence | Désignation |
|------|-----------|---|
| 1 | 70035 | 3/8" inner threaded female quick fit coupling |
| 2 | 80092 | Male quick fit coupling inner threaded 3/8" Ø 6 |
| 3 | 30288 | ø 16 inox narrow washer |
| 4 | 30367 | 3/8" MaleC x 3/8" MaleC low-pressure nipple |
| 5 | 70024 | Elbow BP 90° 3/8 FemaleD x 3/8 FemaleD |
| 6 | 90849 | AG flow meter air hose |
| 7 | M10323 | Spraying machine filter body plug |
| 8 | 1032095 | O-ring 12,42 x 1,78 |
| 9 | 12502 | 50 meshes hopper filter |
| 10 | M10322 | Filter body for spraying machine |
| 11 | 91053 | 3/8" MaleD x 3/8" FemaleD low-pressure nipple |
| 12 | 30288 | ø 16 inox narrow washer |
| 13 | 30005 | Flowmeter for EUROPRO 4-6-8-14 and 24 P |

| Pos. | Référence | Désignation |
|------|--------------|---|
| 14 | M10231 | Wheel for needle valve MIXPRO 14 |
| 15 | 12470 | Needle valve 1/2"F x 1/2"F MIXPRO 14 |
| 16 | 12526 | 3/4" FemaleD x 1/2" MaleD low-pressure nipple |
| 17 | 14241 | Flowmeter electrovalve with 5-pin connector |
| 18 | 11311 | 3/4" FemaleD x 3/4" FemaleD low-pressure nipple |
| 19 | 13502 | 1,5 to 6 bar water pressure regulator with purge |
| 20 | 12526 | 3/4" FemaleD x 1/2" MaleD low-pressure nipple |
| 21 | 30135 | 1/4" mini lux valve |
| 22 | 30122 | F1/2" x M1/2" x F1/2" low pressure T |
| 23 | 30119 | 1/2" MaleC x 1/4" FemaleD low-pressure reduction |
| 24 | 80700 | Cylindrical oil 1/4 axial manometer 50 mm 0 to 16 bar |
| 25 | 11646 | Elbow BP 90° 1/2" MaleC x 1/2" MaleC |
| 26 | 80323 | 3/4" MaleC x 1/2" FemaleD low-pressure reduction |
| 27 | 80128 | Filter for 3/4" brass quick connector |
| 28 | 80124 | Inner threaded 3/4" quick connector |
| 29 | 91054 | 1" MaleC x 1/2" FemaleD low-pressure reduction |
| 29 | 91054 | 1" MaleC x 1/2" FemaleD low-pressure reduction |
| 30 | 70002 | 1" inner threaded adapter for 4 to 14P |
| 31 | 30369 | 1/2" MaleC x 1/2" MaleC low-pressure nipple |
| 32 | 90023 | Red handle valve M1/2" x F1/2" |
| 33 | 12064 | X BP 4 x 1/2"Female |
| 34 | 90243 | 1/2" MaleC x 1/8" FemaleD low-pressure reduction |
| 35 | 12057 | MIXPRO 14 pressure switch 1.6 NO tare |
| 36 | 12891 | MIXPRO 14 & C.P 60 pressure switch connector |
| 37 | 90483 | Elbow BP 90° 1/2 MaleC x 1/2 FemaleD |
| 38 | 30132 | Union coupling 1/2 |
| 39 | MI3D00703001 | 230V MONO electropump |