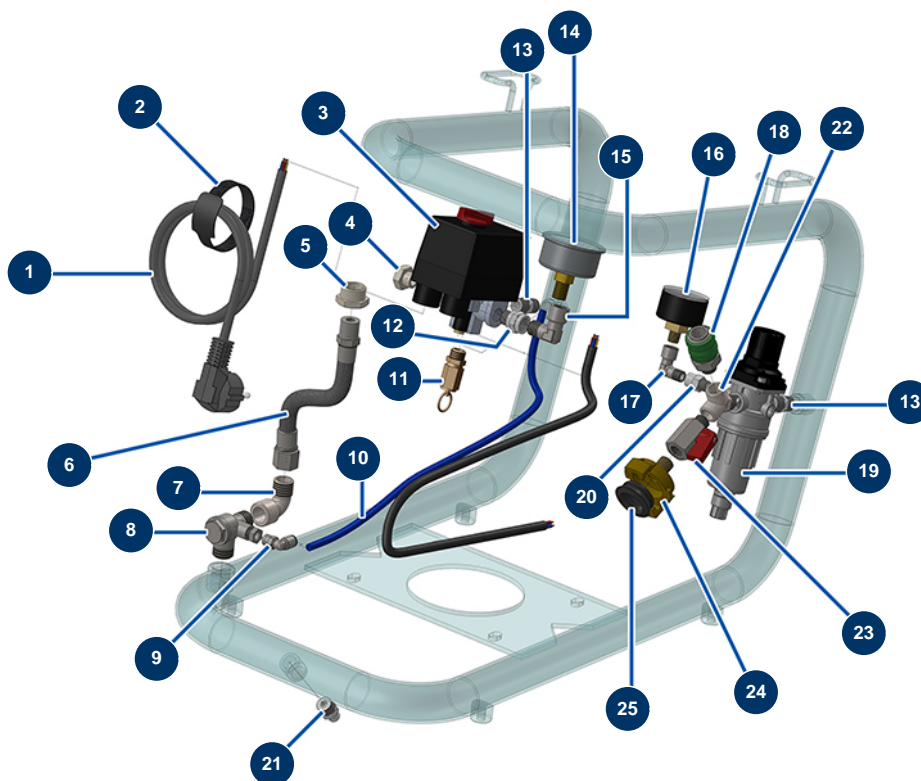


EUROPRO 27 compressor - Air circuit



Détails des pièces

| Pos. | Référence | Désignation |
|------|-----------|---|
| 1 | 90180 | Supply cable with moulded plug 3G 1,5 mm ² |
| 2 | 12410 | Self-gripping collar with loop 12,7 x 228 mm |
| 3 | 30006 | Single phase compressor pressure switch |
| 4 | 30118 | 1/4" low-pressure male plug |
| 5 | 90244 | 1/2" MaleC x 3/8" FemaleD low-pressure reduction |
| 6 | 30140 | E 25 & 27 compressor outlet air hose |
| 7 | 30120 | Elbow BP 90° 3/8 MaleC x 3/8 FemaleD |
| 8 | 80098 | Anti-return valve M3/8 x M3/8 |
| 9 | 30124 | Corrugated Legris coupling M1/8" Ø 6 |
| 10 | 30403 | Calibrated polyurethane tube ø 4 x 6 black by the metre |
| 11 | 80097 | 1/4" certified outer threaded safety valve 11 bar |
| 12 | 90773 | 1/4" MaleD x 1/4" FemaleD low-pressure nipple |
| 13 | 70027 | 1/4" MaleC x 1/4" MaleC low-pressure nipple |

| Pos. | Référence | Désignation |
|------|-----------|---|
| 13 | 70027 | 1/4" MaleC x 1/4" MaleC low-pressure nipple |
| 14 | 80028 | 1/4 conical axial manometer - 50mm - 0 to 20 bar |
| 15 | 30121 | 90° low-pressure elbow 1/4 MaleC x 1/4 FemaleD |
| 16 | 80023 | Axial manometer 1/8 conical 40 mm 0 to 10 bar |
| 17 | 91169 | Elbow BP 90° 1/8 MaleC x 1/8 FemaleD |
| 18 | 80080 | Female quick fit coupling outer threaded 1/4" Ø 6 |
| 19 | 90014 | Superimposed 1/4" regulator filter |
| 20 | 80642 | 1/8" MaleD x 1/8" FemaleD low-pressure nipple |
| 21 | 30133 | 1/4" male compressor tank purge |
| 22 | 30123 | Low pressure Y - M1/4" x F1/4" x F1/4" |
| 23 | 30135 | 1/4" mini lux valve |
| 24 | 70097 | 1/4" outer threaded quick fit coupling |
| 25 | 12118 | GEKA coupling gasket |