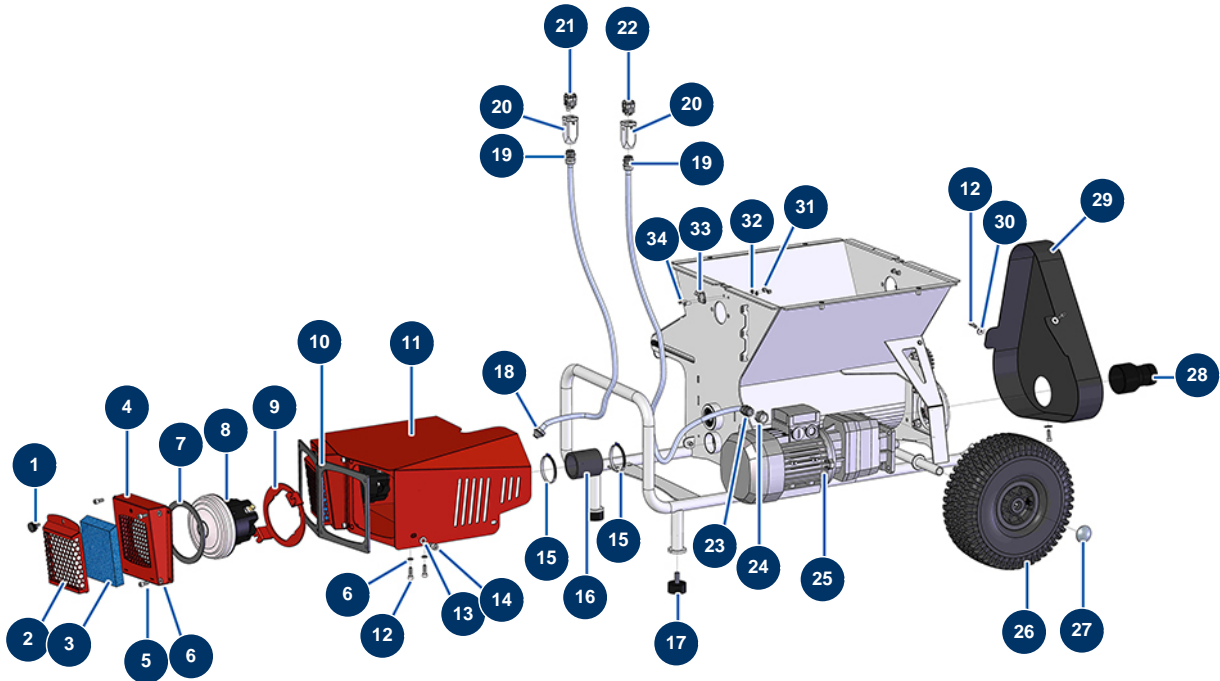


## TURBISOL 164/2 blowing machine - Chassis



### Détails des pièces

Pos.	Référence	Désignation
1	12261	Ø22 M5 x 10 outer threaded plastic thumb wheel
2	C21971	TURBISOL 164 foam filter holder
3	13989	TURBISOL 164 turbine foam filter
4	C21498	Turbine door for TURBISOL 164/2 blowing machine
5	80470	8 x 20 cylindrical head screw
6	80259	Ø 6 medium washer
6	80259	Ø 6 medium washer
7	13537	TURBISOL 164/2 turbine gasket
8	13556	1-stage turbine - 230V
9	C21500	Turbine flange for TURBISOL 164/2
10	13536	Double turbine box gasket for TURBISOL 164/2
11	C21494	Air box for TURBISOL 164/2 blowing machine
12	90996	6 x 20 inox cylindrical head screw

Pos.	Référence	Désignation
12	90996	6 x 20 inox cylindrical head screw
13	80260	ø 8 inox medium washer
14	30295	THEF 8 x 16 screw
15	11752	Worm gear clamp 50 x 70 x 9
15	11752	Worm gear clamp 50 x 70 x 9
16	12216	Blowing machine hose Ø 48 x Length 75 mm
17	30145	Ø 40 x 20 M10 stop
18	13632	M 20 grey rubber cable gland
19	30082	Nickel plated watertight cable gland of 11
19	30082	Nickel plated watertight cable gland of 11
20	11916	Blowing machine insulating cover 3 p + T
20	11916	Blowing machine insulating cover 3 p + T
21	11913	Blowing machine male insert 4 p + T
22	11911	Blowing machine male insert 3 p + T
23	30040	Nickel plated watertight cable gland of 11 CEM
24	80446	Cable gland reduction M 25-11
25	12181	Geared motor 0,75 kW - TC122 - R20,6 - 1400 rpm - 400V
26	90692	Complete wheel 300 shaft of 20
27	90282	Ø25 chromed clip
28	M10154	Ø 63-51 blowing machine outlet reduction
29	12845	TURBISOL 56 & 112 blowing machine pulley protective crankcase
30	30293	ø 10 inox large washer
31	12737	M 3 nylstop nut
32	11737	ø 5 inox medium washer
33	13111	Large hood locking adjustable locking clamp - C.P 60
34	90130	5 x 16 countersunk head screw