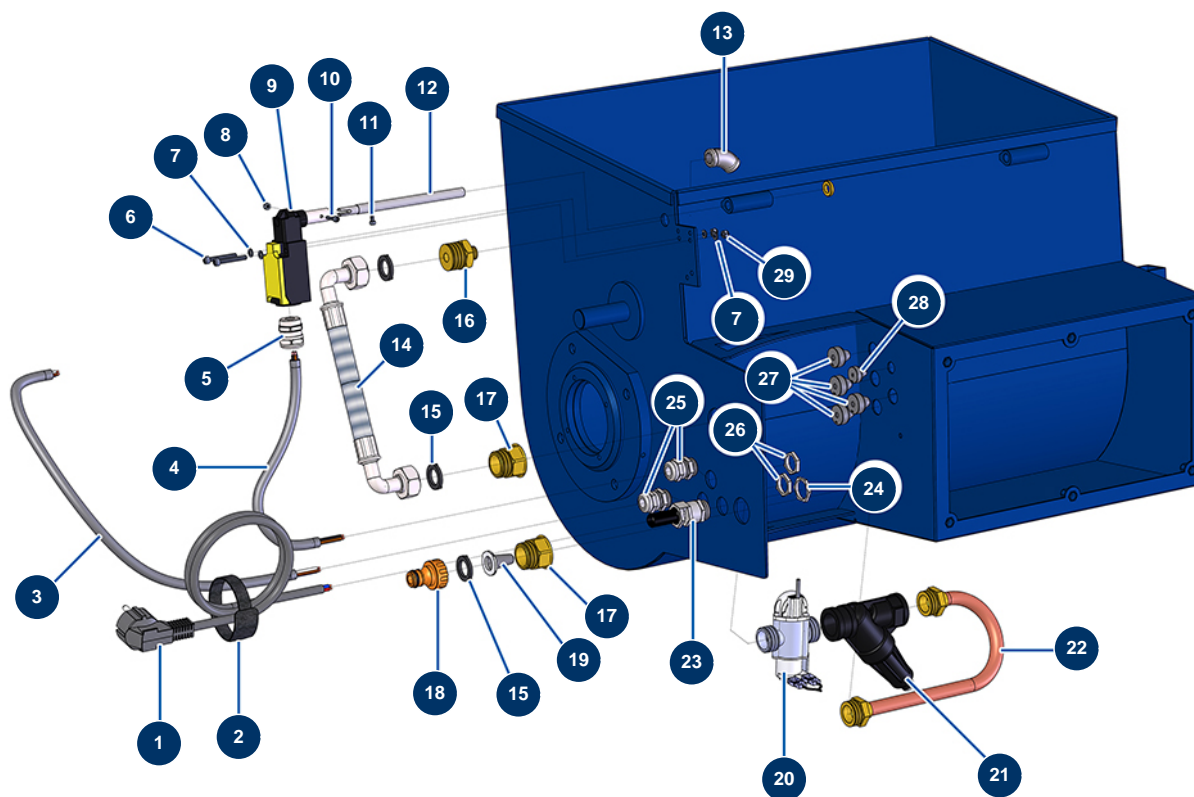


## MIXPRO 80 PREMIUM sequential mixer - Hydraulic circuit



### Détails des pièces

Pos.	Référence	Désignation
1	90180	Supply cable with moulded plug 3G 1,5 mm <sup>2</sup>
2	12410	Self-gripping collar with loop 12,7 x 228 mm
3	90606	Shielded cable 4 x 1,5 by the metre
4	30018	H07RNF 4G1.5 electrical cable by the metre
5	80448	M 20 waterproof cable gland
6	11882	4 x 30 cylindrical head screw
7	30267	ø 4 inox narrow washer
7	30267	ø 4 inox narrow washer
8	12737	M 3 nylon stop nut
9	12742	Version 2 CP mixer grid switch
10	12250	3 x 16 cylindrical head screw
11	13329	3 x 6 cylindrical head screw
12	11500	CP mixer grid switch hinge axle

Pos.	Référence	Désignation
13	12104	45° inox low-pressure elbow FemaleD 1/4 x MaleD 1/4
14	12642	COMPACT PRO IDEAL mixer supply hose
15	11618	3/4" red fiber flat gasket
15	11618	3/4" red fiber flat gasket
16	12640	3/4" MaleD x 1/4" MaleD low-pressure nipple
17	12562	3/4" MaleD x 3/4" FemaleD low-pressure nipple
17	12562	3/4" MaleD x 3/4" FemaleD low-pressure nipple
18	80124	Inner threaded 3/4" quick connector
19	80128	Filter for 3/4" brass quick connector
20	14979	Flowmeter electrovalve 24VDC G1/2
21	12066	Water pressure regulator 0.8 to 2.5 bar
22	C20583	COMPACT-PRO mixer copper hose
23	80450	cable gland for 11mm supply cable
24	30060	11mm cable gland nut
25	30040	Nickel plated watertight cable gland of 11 CEM
26	30333	Cable gland locknut of 11 CEM
27	11564	M 16 grey rubber cable gland
28	11563	M 12 grey rubber cable gland
29	30266	M 4 nylstop nut