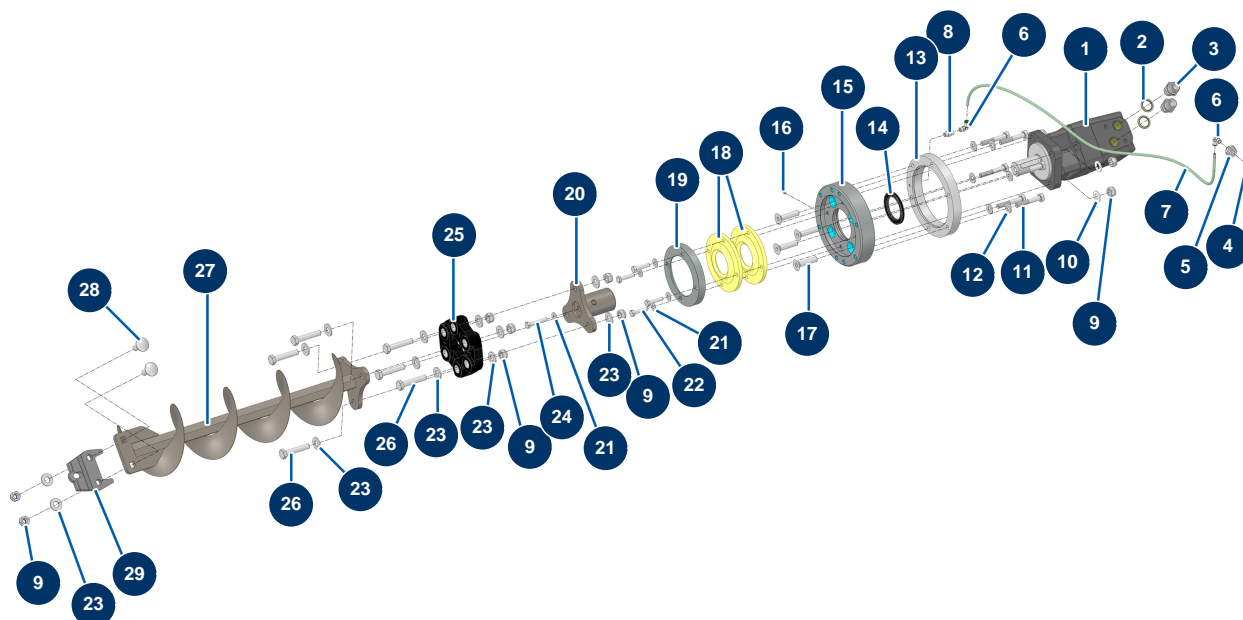


X-PRO D85 spraying machine - Transmission



Détails des pièces

Pos.	Référence	Désignation
1	15468	1
2	91032	Steel gasket for hollow screw with 1/2" lip
3	90627	1/2" MaleD x 1/2" MaleD high-pressure nipple
4	20044	1/8" M straight lubricator
5	20159	
6	30124	Corrugated Legris coupling M1/8" Ø 6
6	30124	Corrugated Legris coupling M1/8" Ø 6
7	30403	Calibrated polyurethane tube ø 4 x 6 black by the metre
8	80642	1/8" MaleD x 1/8" FemaleD low-pressure nipple
9	10051	M 12 nylstop nut
9	10051	M 12 nylstop nut
9	10051	M 12 nylstop nut
9	10051	M 12 nylstop nut

Pos.	Référence	Désignation
10	30281	∅ 12 inox narrow washer
11	12770	10 x 60 THPF screw
12	80261	∅ 10 inox medium washer
13	M10939	
14	12825	Spi seal 50 x 72 x 6 - C.P 60
15	M10888	
16	11402	5 x 5 stainless steel socket head screw with flat tip
17	12805	12 x 50 countersunk head screw
18	15300	X-PRO machine tank bottom gasket
19	M10894	
20	C24125	X-PRO D85 hopper motor coupling
21	80260	∅ 8 inox medium washer
21	80260	∅ 8 inox medium washer
22	11545	THEF 8 x 35 inox screw
23	14102	∅ 12 inox medium washer
23	14102	∅ 12 inox medium washer
23	14102	∅ 12 inox medium washer
23	14102	∅ 12 inox medium washer
23	14102	∅ 12 inox medium washer
24	11798	THEF 8 x 45 screw
25	14661	Transmission shaft elastic coupling - X-PRO D140
26	30263	THEF 12 x 60 screw
26	30263	THEF 12 x 60 screw
27	C24124	X-PRO D85 hopper drive shaft
28	15395	
29	M10922	