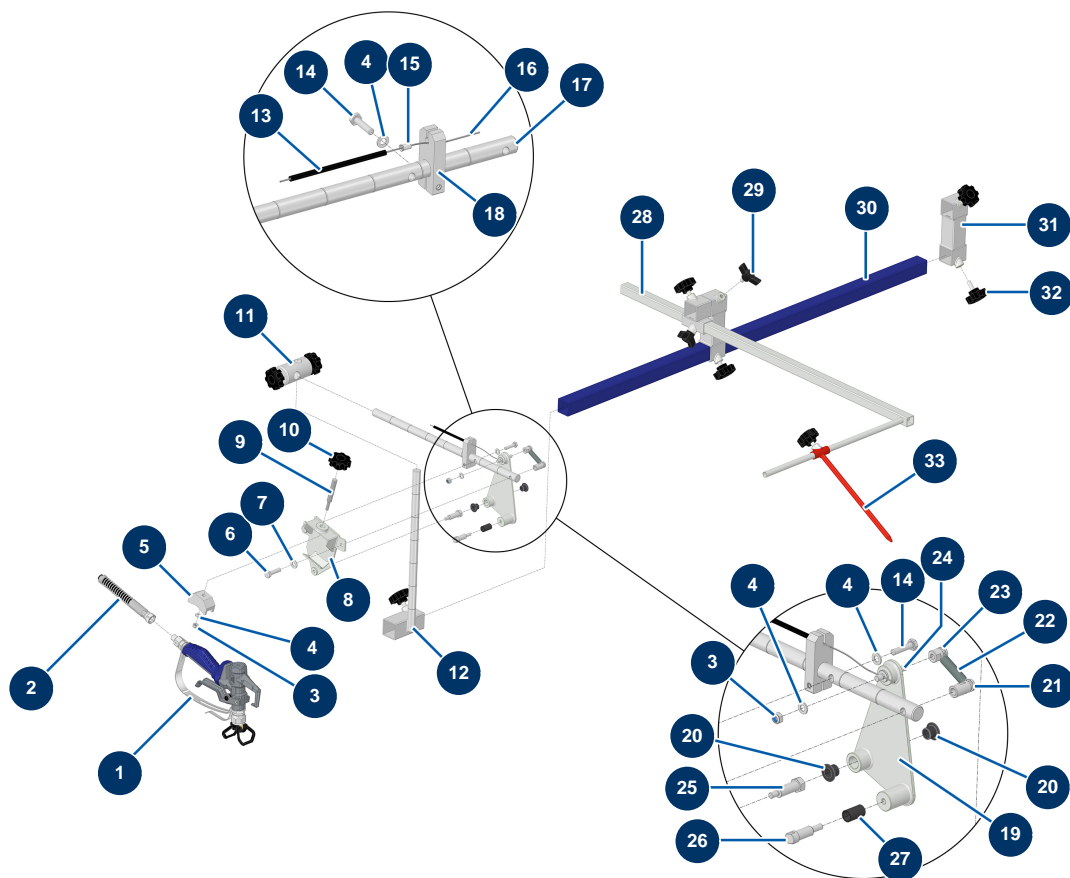


HYDROLINE L airless self-propelled marking machine - 2 spray-guns - Spray bar



Détails des pièces

| Pos. | Référence | Désignation |
|------|-----------|--|
| 1 | 51030 | PAINTSPRAY spray-gun with 7/8" G tip holder |
| 2 | 40052 | 2 x 1/4"F-F 15 m 270 bar high-pressure flexible hose |
| 3 | 14217 | M 6 nylstop inox nut |
| 3 | 14217 | M 6 nylstop inox nut |
| 4 | 70087 | ø 6 inox narrow washer |
| 4 | 70087 | ø 6 inox narrow washer |
| 4 | 70087 | ø 6 inox narrow washer |
| 4 | 70087 | ø 6 inox narrow washer |
| 5 | M10868 | |
| 6 | 30205 | THEF 8 x 30 screw |
| 7 | 80260 | ø 8 inox medium washer |
| 8 | 51426 | Spray-gun trigger actuator for HYDROLINE marking machine |
| 9 | M10844 | |

| Pos. | Référence | Désignation |
|------|--------------|--|
| 10 | 13432 | M10 plastic thumb wheel |
| 11 | M10848 | 11 |
| 12 | C23711 | 12 |
| 13 | 51408 | |
| 14 | 14218 | THEF 6 x 25 inox screw |
| 14 | 14218 | THEF 6 x 25 inox screw |
| 15 | 51409 | |
| 16 | 51407 | |
| 17 | M10847 | 17 |
| 18 | M10863 | |
| 19 | 51427 | Spray-gun mounting bracket for HYDROLINE marking machine |
| 20 | 51432 | |
| 20 | 51432 | |
| 21 | M10845 | |
| 22 | 51410 | |
| 23 | M10852 | |
| 24 | M10869 | |
| 25 | M10854 | |
| 26 | M10850 | 26 |
| 27 | 51431 | |
| 28 | C23695 | 28 |
| 29 | MI3T01505001 | Mixer black Eye bolt diam 8 |
| 30 | C23683 | |
| 31 | C23690 | 31 |
| 32 | 11514 | Plastic thumb wheel M8 x 20 |
| 33 | C23705 | 33 |