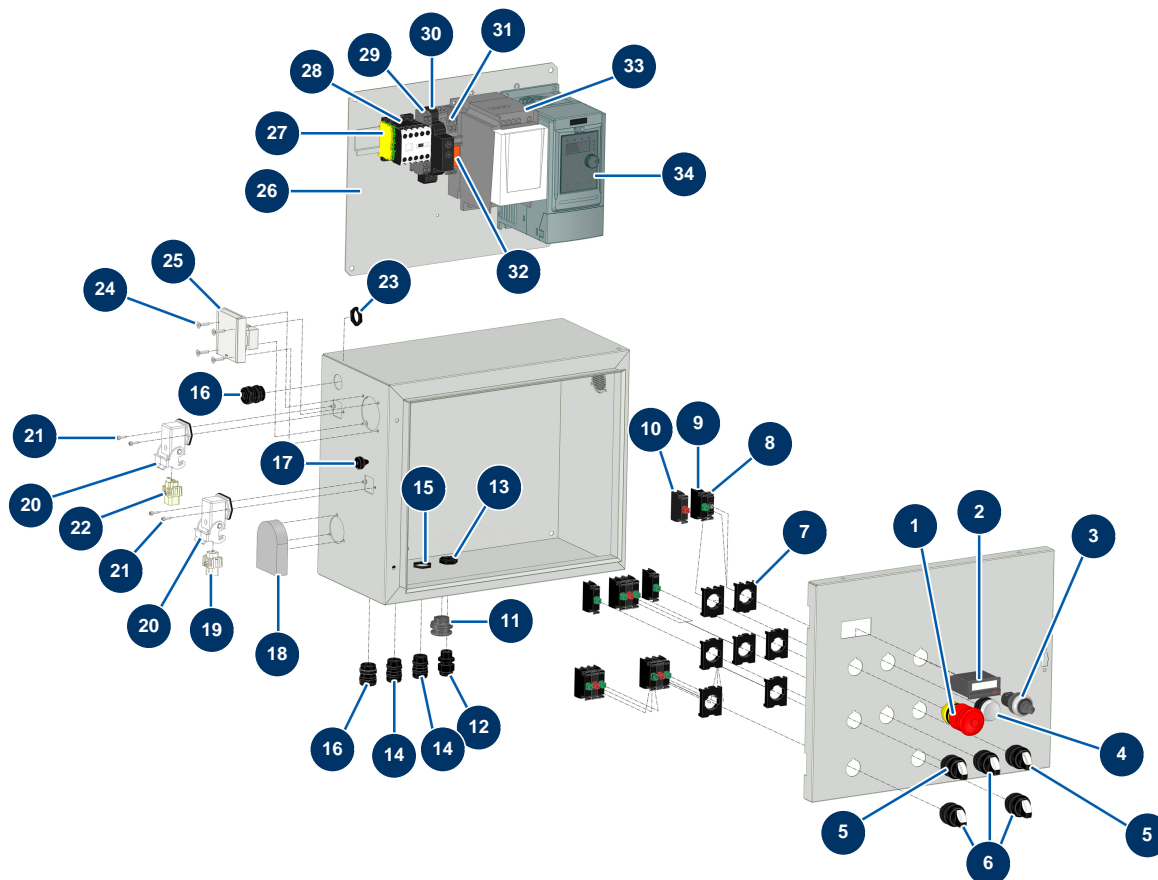


TWINMIX two-component dosing machine - Electrical box



Détails des pièces

Pos.	Référence	Désignation
1	90727	Hook emergency stop button - CP 60
2	11968	
3	80645	Spraying machine complete potentiometer from MARCH 2003
4	30035	Impulse transparent indicator button
5	30025	2-position button
5	30025	2-position button
6	90731	3-position button
7	30036	3-contact U-bolt
8	14665	Led Bulb 24 VDC multicoloured
9	30028	Green single closed contact
10	30356	Red single open contact
11	12022	Box door shutter button
12	1002837	PG 09 watertight cable gland

Pos.	Référence	Désignation
13	1002838	PG 9 cable gland nut
14	30082	Nickel plated watertight cable gland of 11
14	30082	Nickel plated watertight cable gland of 11
15	30060	11mm cable gland nut
16	80448	M 20 waterproof cable gland
16	80448	M 20 waterproof cable gland
17	11563	M 12 grey rubber cable gland
18	K008274	
19	11912	Blowing machine female insert 3 p + T
20	12543	Insulating bend socket base 3p + G - 1 lever
20	12543	Insulating bend socket base 3p + G - 1 lever
21	310011	3 x 10 cylindrical head screw
21	310011	3 x 10 cylindrical head screw
22	11914	Female insert 4p + G
23	11197	M 20 cable gland nut
24	13912	4 x 16 countersunk head screw
25	90489	2P recessed socket + t with grey valve
26	C23463	26
27	30038	Yellow and green conductive block 6 mm ²
28	30011	230 Volt coil switch for sprayer
29	80482	Grey conductor block 6 mm ²
30	MI3C03750400	Timer 2 delayed threads 24/230AC/DC
31	12751	Plug-in miniature relay base
32	13140	Miniature plug-in relay 24V VDC - 2RT
33	12098	Inverter 230 V - 0,55 KW
34	80459	Inverter 230 V - 2.2 KW